



SZABO SCANDIC

Part of Europa Biosite

Produktinformation



Forschungsprodukte & Biochemikalien



Zellkultur & Verbrauchsmaterial



Diagnostik & molekulare Diagnostik



Laborgeräte & Service

Weitere Information auf den folgenden Seiten!
See the following pages for more information!



Lieferung & Zahlungsart

siehe unsere [Liefer- und Versandbedingungen](#)

Zuschläge

- Mindermengenzuschlag
- Trockeneiszuschlag
- Gefahrgutzuschlag
- Expressversand

SZABO-SCANDIC HandelsgmbH

Quellenstraße 110, A-1100 Wien

T. +43(0)1 489 3961-0

F. +43(0)1 489 3961-7

mail@szabo-scandic.com

www.szabo-scandic.com

[linkedin.com/company/szaboscandic](https://www.linkedin.com/company/szaboscandic) 

SCGB1A1 (Human) Matched Antibody Pair

Catalog # : H00007356-AP11

規格 : [1 Set]

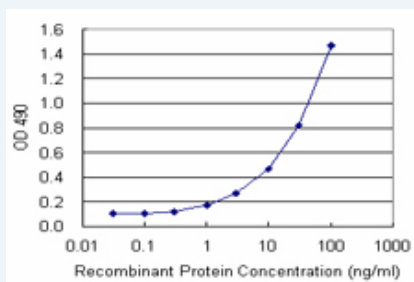
[List All](#)

Specification

Product Description: This antibody pair set comes with matched antibody pair to detect and quantify protein level of human SCGB1A1.

Reactivity: Human

Quality Control Testing: Standard curve using recombinant protein (H00007356-P01) as an analyte.



Sandwich ELISA detection sensitivity ranging from 1 ng/ml to 100 ng/ml.

Supplied Product: Antibody pair set content:
 1. Capture antibody: rabbit MaxPab® affinity purified polyclonal anti-SCGB1A1 (100 ug)
 2. Detection antibody: mouse monoclonal anti-SCGB1A1, IgG2b Kappa (20 ug)
 *Reagents are sufficient for at least 1-2 x 96 well plates using recommended protocols.

Storage Instruction: Store reagents of the antibody pair set at -20°C or lower. Please aliquot to avoid repeated freeze thaw cycle. Reagents should be returned to -20°C storage immediately after use.

MSDS:  [Download](#)

Applications

ELISA Pair (Recombinant protein)

 [Protocol Download](#)

Gene Information

Entrez GeneID: [7356](#)

Gene Name: SCGB1A1

Gene Alias: CC10,CC16,CCSP,UGB

Gene Description: secretoglobin, family 1A, member 1 (uteroglobin)

Omim ID: [192020](#), [600807](#)

Gene Ontology: [Hyperlink](#)

Application Image

ELISA Pair (Recombinant protein)

Other Uteroglobin (Clara-cell specific 10-kD protein)

Designations:

Related Disease

[Acute Disease](#) [Arthritis, Rheumatoid](#) [Asthma](#) [Asthma](#) [Atherosclerosis](#) [Birth Weight](#)
[Brain Ischemia](#) [Bronchial Hyperreactivity](#) [Bronchiolitis, Viral](#) [Cardiovascular Diseases](#)
[Chlamydia Infections](#) [Connective Tissue Diseases](#) [Constriction, Pathologic](#)
[Coronary Artery Disease](#) [Coronary Disease](#) [Dermatitis, Atopic](#) [Diabetes Mellitus, Type 2](#)
[Disease Progression](#) [Erythema Nodosum](#)

... see more

[服務條款](#) | [隱私權政策](#) | [著作及商標](#) | [網站地圖](#)

©2016 亞諾法生技股份有限公司 Abnova Corporation. 版權所有.