



SZABO SCANDIC

Part of Europa Biosite

Produktinformation



Forschungsprodukte & Biochemikalien



Zellkultur & Verbrauchsmaterial



Diagnostik & molekulare Diagnostik



Laborgeräte & Service

Weitere Information auf den folgenden Seiten!
See the following pages for more information!



Lieferung & Zahlungsart

siehe unsere [Liefer- und Versandbedingungen](#)

Zuschläge

- Mindermengenzuschlag
- Trockeneiszuschlag
- Gefahrgutzuschlag
- Expressversand

SZABO-SCANDIC HandelsgmbH

Quellenstraße 110, A-1100 Wien

T. +43(0)1 489 3961-0

F. +43(0)1 489 3961-7

mail@szabo-scandic.com

www.szabo-scandic.com

[linkedin.com/company/szaboscandic](https://www.linkedin.com/company/szaboscandic) 

VEGFB (Human) Matched Antibody Pair

Catalog # : H00007423-AP21

規格 : [1 Set]

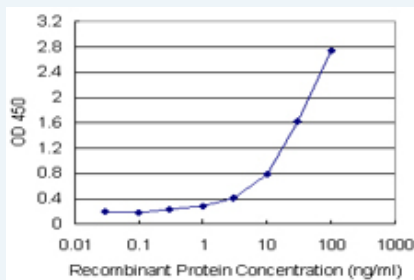
[List All](#)

Specification

Product Description: This antibody pair set comes with matched antibody pair to detect and quantify protein level of human VEGFB.

Reactivity: Human

Quality Control Testing: Standard curve using recombinant protein (H00007423-P01) as an analyte.



Sandwich ELISA detection sensitivity ranging from 0.3 ng/ml to 100 ng/ml.

Supplied Product: Antibody pair set content:
 1. Capture antibody: rabbit MaxPab® affinity purified polyclonal anti-VEGFB (100 ug)
 2. Detection antibody: mouse purified polyclonal anti-VEGFB (20 ug)
 *Reagents are sufficient for at least 1-2 x 96 well plates using recommended protocols.

Storage Instruction: Store reagents of the antibody pair set at -20°C or lower. Please aliquot to avoid repeated freeze thaw cycle. Reagents should be returned to -20°C storage immediately after use.

MSDS:  [Download](#)

Applications

ELISA Pair (Recombinant protein)

 [Protocol Download](#)

Gene Information

Entrez GeneID: [7423](#)

Gene Name: VEGFB

Gene Alias: VEGFL, VRF

Gene Description: vascular endothelial growth factor B

Omim ID: [601398](#)

Gene Ontology: [Hyperlink](#)

Application Image

ELISA Pair (Recombinant protein)

Other -
Designations:

Gene Pathway

[Bladder cancer](#) [Cytokine-cytokine receptor interaction](#) [Focal adhesion](#)
[mTOR signaling pathway](#) [Pancreatic cancer](#) [Pathways in cancer](#) [Renal cell carcinoma](#)

Related Disease

[Atherosclerosis](#) [Calcinosis](#) [Cardiovascular Diseases](#) [Chorioamnionitis](#)
[Coronary Artery Disease](#) [Diabetes Mellitus, Type 2](#) [Edema](#)
[Fetal Membranes, Premature Rupture](#) [Genetic Predisposition to Disease](#)
[Hypertrophy, Left Ventricular](#) [Lymphedema](#) [Obstetric Labor, Premature](#) [Pre-Eclampsia](#)
[Premature Birth](#)

[服務條款](#) | [隱私權政策](#) | [著作及商標](#) | [網站地圖](#)

©2016 亞諾法生技股份有限公司 Abnova Corporation. 版權所有.