



SZABO SCANDIC

Part of Europa Biosite

Produktinformation



Forschungsprodukte & Biochemikalien



Zellkultur & Verbrauchsmaterial



Diagnostik & molekulare Diagnostik



Laborgeräte & Service

Weitere Information auf den folgenden Seiten!
See the following pages for more information!



Lieferung & Zahlungsart

siehe unsere [Liefer- und Versandbedingungen](#)

Zuschläge

- Mindermengenzuschlag
- Trockeneiszuschlag
- Gefahrgutzuschlag
- Expressversand

SZABO-SCANDIC HandelsgmbH

Quellenstraße 110, A-1100 Wien

T. +43(0)1 489 3961-0

F. +43(0)1 489 3961-7

mail@szabo-scandic.com

www.szabo-scandic.com

[linkedin.com/company/szaboscandic](https://www.linkedin.com/company/szaboscandic) 

EZR (Human) IP-WB Antibody Pair

Catalog # : H00007430-PW1

規格 : [1 Set]

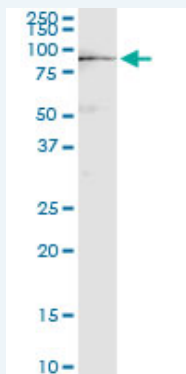
[List All](#)

Specification

Product Description: This IP-WB antibody pair set comes with one antibody for immunoprecipitation and another to detect the precipitated protein in western blot.

Reactivity: Human

Quality Control Testing: Immunoprecipitation-Western Blot (IP-WB)



Immunoprecipitation of EZR transfected lysate using rabbit polyclonal anti-EZR and Protein A Magnetic Bead ([U0007](#)), and immunoblotted with mouse purified polyclonal anti-EZR.

Supplied Product: Antibody pair set content:
1. Antibody pair for IP: rabbit polyclonal anti-EZR (300 ul)
2. Antibody pair for WB: mouse purified polyclonal anti-EZR (50 ug)

Storage Instruction: Store reagents of the antibody pair set at -20°C or lower. Please aliquot to avoid repeated freeze thaw cycle. Reagents should be returned to -20°C storage immediately after use.

MSDS:  [Download](#)

Applications

Immunoprecipitation-Western Blot

 [Protocol Download](#)

Gene Information

Entrez GeneID: [7430](#)

Gene Name: EZR

Gene Alias: CVIL, CVL, DKFZp762H157, FLJ26216, MGC1584, VIL2

Gene Description: ezrin

Omim ID: [123900](#)

Gene Ontology: [Hyperlink](#)

Application Image

Immunoprecipitation-Western Blot

Gene Summary: The cytoplasmic peripheral membrane protein encoded by this gene functions as a protein-tyrosine kinase substrate in microvilli. As a member of the ERM protein family, this protein serves as an intermediate between the plasma membrane and the actin cytoskeleton. This protein plays a key role in cell surface structure adhesion, migration and organization, and it has been implicated in various human cancers. A pseudogene located on chromosome 3 has been identified for this gene. Alternatively spliced variants have also been described for this gene. [provided by RefSeq]

Other Designations: OTTHUMP00000017506,OTTHUMP00000017507,cytovillin 2,villin 2 (ezrin)

Gene Pathway

[Leukocyte transendothelial migration](#) [Pathogenic Escherichia coli infection - EHEC](#)
[Regulation of actin cytoskeleton](#)

Related Disease

[Asthma](#) [Asthma](#) [Cardiovascular Diseases](#) [Diabetes Mellitus, Type 2](#) [Edema](#)
[Genetic Predisposition to Disease](#) [Hypersensitivity](#) [Lung Neoplasms](#) [Ovarian Neoplasms](#)
[Pulmonary Disease, Chronic Obstructive](#) [Tobacco Use Disorder](#)
[Urinary Bladder Neoplasms](#) [Werner syndrome](#)

[服務條款](#) | [隱私權政策](#) | [著作及商標](#) | [網站地圖](#)

©2016 亞諾法生技股份有限公司 Abnova Corporation. 版權所有.