



SZABO SCANDIC

Part of Europa Biosite

Produktinformation



Forschungsprodukte & Biochemikalien



Zellkultur & Verbrauchsmaterial



Diagnostik & molekulare Diagnostik



Laborgeräte & Service

Weitere Information auf den folgenden Seiten!
See the following pages for more information!



Lieferung & Zahlungsart

siehe unsere [Liefer- und Versandbedingungen](#)

Zuschläge

- Mindermengenzuschlag
- Trockeneiszuschlag
- Gefahrgutzuschlag
- Expressversand

SZABO-SCANDIC HandelsgmbH

Quellenstraße 110, A-1100 Wien

T. +43(0)1 489 3961-0

F. +43(0)1 489 3961-7

mail@szabo-scandic.com

www.szabo-scandic.com

[linkedin.com/company/szaboscandic](https://www.linkedin.com/company/szaboscandic) 

YES1 (Human) IP-WB Antibody Pair

Catalog # : H00007525-PW1

規格 : [1 Set]

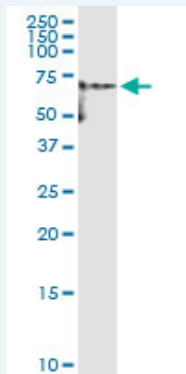
List All

Specification

Product Description: This IP-WB antibody pair set comes with one antibody for immunoprecipitation and another to detect the precipitated protein in western blot.

Reactivity: Human

Quality Control Testing: Immunoprecipitation-Western Blot (IP-WB)



Immunoprecipitation of YES1 transfected lysate using rabbit polyclonal anti-YES1 and Protein A Magnetic Bead ([U0007](#)), and immunoblotted with mouse polyclonal anti-YES1.

Supplied Product: Antibody pair set content:
1. Antibody pair for IP: rabbit polyclonal anti-YES1 (300 ul)
2. Antibody pair for WB: mouse polyclonal anti-YES1 (50 ul)

Storage Instruction: Store reagents of the antibody pair set at -20°C or lower. Please aliquot to avoid repeated freeze thaw cycle. Reagents should be returned to -20°C storage immediately after use.

MSDS:  [Download](#)

Applications

Immunoprecipitation-Western Blot

 [Protocol Download](#)

Gene Information

Entrez GeneID: [7525](#)

Gene Name: YES1

Gene Alias: HsT441,P61-YES,Yes,c-yes

Gene Description: v-yes-1 Yamaguchi sarcoma viral oncogene homolog 1

Omim ID: [164880](#)

Gene Ontology: [Hyperlink](#)

Application Image

Immunoprecipitation-Western Blot

Gene Summary: This gene is the cellular homolog of the Yamaguchi sarcoma virus oncogene. The encoded protein has tyrosine kinase activity and belongs to the src family of proteins. This gene lies in close proximity to thymidylate synthase gene on chromosome 18, and a corresponding pseudogene has been found on chromosome 22. [provided by RefSeq]

Other Designations: OTTHUMP00000162194, Yamaguchi sarcoma oncogene, cellular yes-1 protein, proto-oncogene tyrosine-protein kinase YES, viral oncogene yes-1 homolog 1

Gene Pathway

[Adherens junction](#) [Tight junction](#)

Related Disease

[Celiac Disease](#) [Genetic Predisposition to Disease](#) [HIV Infections](#)

[服務條款](#) | [隱私權政策](#) | [著作及商標](#) | [網站地圖](#)

©2016 亞諾法生技股份有限公司 Abnova Corporation. 版權所有.