



# SZABO SCANDIC

Part of Europa Biosite

## Produktinformation



Forschungsprodukte & Biochemikalien



Zellkultur & Verbrauchsmaterial



Diagnostik & molekulare Diagnostik



Laborgeräte & Service

Weitere Information auf den folgenden Seiten!  
See the following pages for more information!



### Lieferung & Zahlungsart

siehe unsere [Liefer- und Versandbedingungen](#)

### Zuschläge

- Mindermengenzuschlag
- Trockeneiszuschlag
- Gefahrgutzuschlag
- Expressversand

### SZABO-SCANDIC HandelsgmbH

Quellenstraße 110, A-1100 Wien

T. +43(0)1 489 3961-0

F. +43(0)1 489 3961-7

[mail@szabo-scandic.com](mailto:mail@szabo-scandic.com)

[www.szabo-scandic.com](http://www.szabo-scandic.com)

[linkedin.com/company/szaboscandic](https://www.linkedin.com/company/szaboscandic) 

## BSND (Human) IP-WB Antibody Pair

Catalog # : H00007809-PW2

規格 : [ 1 Set ]

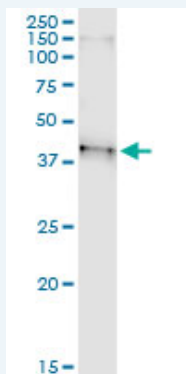
[List All](#)

### Specification

**Product Description:** This IP-WB antibody pair set comes with one antibody for immunoprecipitation and another to detect the precipitated protein in western blot.

**Reactivity:** Human

**Quality Control Testing:** Immunoprecipitation-Western Blot (IP-WB)



Immunoprecipitation of BSND transfected lysate using rabbit polyclonal anti-BSND and Protein A Magnetic Bead ([U0007](#)), and immunoblotted with mouse purified polyclonal anti-BSND.

**Supplied Product:** Antibody pair set content:  
 1. Antibody pair for IP: rabbit polyclonal anti-BSND (300 ul)  
 2. Antibody pair for WB: mouse purified polyclonal anti-BSND (50 ug)

**Storage Instruction:** Store reagents of the antibody pair set at -20°C or lower. Please aliquot to avoid repeated freeze thaw cycle. Reagents should be returned to -20°C storage immediately after use.

### Applications

Immunoprecipitation-Western Blot

 [Protocol Download](#)

### Gene Information

**Entrez GeneID:** [7809](#)

**Gene Name:** BSND

**Gene Alias:** BART,MGC119283,MGC119284,MGC119285

**Gene Description:** Bartter syndrome, infantile, with sensorineural deafness (Barttin)

**Omim ID:** [602522](#), [606412](#)

**Gene Ontology:** [Hyperlink](#)

**Gene Summary:** This gene encodes an essential beta subunit for CLC chloride

channels. These heteromeric channels localize to basolateral membranes of renal tubules and of potassium-secreting epithelia of the inner ear. Mutations in this gene have been associated with Bartter syndrome with sensorineural deafness. [provided by RefSeq]

---

**Other Designations:** OTTHUMP00000009804,barttin

---

**Related Disease**

---

Cardiovascular Diseases Diabetes Mellitus, Type 2 Edema Hypertension

---

[服務條款](#) | [隱私權政策](#) | [著作及商標](#) | [網站地圖](#)

©2016 亞諾法生技股份有限公司 Abnova Corporation. 版權所有.