



SZABO SCANDIC

Part of Europa Biosite

Produktinformation



Forschungsprodukte & Biochemikalien



Zellkultur & Verbrauchsmaterial



Diagnostik & molekulare Diagnostik



Laborgeräte & Service

Weitere Information auf den folgenden Seiten!
See the following pages for more information!



Lieferung & Zahlungsart

siehe unsere [Liefer- und Versandbedingungen](#)

Zuschläge

- Mindermengenzuschlag
- Trockeneiszuschlag
- Gefahrgutzuschlag
- Expressversand

SZABO-SCANDIC HandelsgmbH

Quellenstraße 110, A-1100 Wien

T. +43(0)1 489 3961-0

F. +43(0)1 489 3961-7

mail@szabo-scandic.com

www.szabo-scandic.com

[linkedin.com/company/szaboscandic](https://www.linkedin.com/company/szaboscandic) 

SSPN (Human) IP-WB Antibody Pair

Catalog # : H00008082-PW2

規格 : [1 Set]

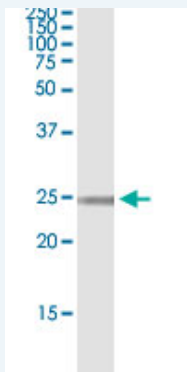
List All

Specification

Product Description: This IP-WB antibody pair set comes with one antibody for immunoprecipitation and another to detect the precipitated protein in western blot.

Reactivity: Human

Quality Control Testing: Immunoprecipitation-Western Blot (IP-WB)



Immunoprecipitation of SSPN transfected lysate using rabbit polyclonal anti-SSPN and Protein A Magnetic Bead ([U0007](#)), and immunoblotted with mouse purified polyclonal anti-SSPN.

Supplied Product: Antibody pair set content:
 1. Antibody pair for IP: rabbit polyclonal anti-SSPN (300 ul)
 2. Antibody pair for WB: mouse purified polyclonal anti-SSPN (50 ug)

Storage Instruction: Store reagents of the antibody pair set at -20°C or lower. Please aliquot to avoid repeated freeze thaw cycle. Reagents should be returned to -20°C storage immediately after use.

Applications

Immunoprecipitation-Western Blot

 [Protocol Download](#)

Gene Information

Entrez GeneID: [8082](#)

Gene Name: SSPN

Gene Alias: DAGA5, KRAG, NSPN, SPN1, SPN2, nanospan

Gene Description: sarcospan (Kras oncogene-associated gene)

Omim ID: [601599](#)

Gene Ontology: [Hyperlink](#)

Gene Summary: This gene encodes a member of the dystrophin-glycoprotein complex

(DGC). The DGC spans the sarcolemma and is comprised of dystrophin, syntrophin, alpha- and beta-dystroglycans and sarcoglycans. The DGC provides a structural link between the subsarcolemmal cytoskeleton and the extracellular matrix of muscle cells. Two alternatively spliced transcript variants that encode different protein isoforms have been described. [provided by RefSeq

Other K-ras oncogene-associated gene (sarcospan),Kirsten-ras
Designations: associated,microspan,sarcospan

Related Disease

[Adenocarcinoma](#) [Carcinoma, Non-Small-Cell Lung](#) [Carcinoma, Squamous Cell](#)
[Cardiovascular Diseases](#) [Chronic Disease](#) [Diabetes Mellitus, Type 2](#) [Edema](#) [Gastritis](#)
[Helicobacter Infections](#) [Lung Neoplasms](#) [Stomach Neoplasms](#)

[服務條款](#) | [隱私權政策](#) | [著作及商標](#) | [網站地圖](#)

©2016 亞諾法生技股份有限公司 Abnova Corporation. 版權所有.