



SZABO SCANDIC

Part of Europa Biosite

Produktinformation



Forschungsprodukte & Biochemikalien



Zellkultur & Verbrauchsmaterial



Diagnostik & molekulare Diagnostik



Laborgeräte & Service

Weitere Information auf den folgenden Seiten!
See the following pages for more information!



Lieferung & Zahlungsart

siehe unsere [Liefer- und Versandbedingungen](#)

Zuschläge

- Mindermengenzuschlag
- Trockeneiszuschlag
- Gefahrgutzuschlag
- Expressversand

SZABO-SCANDIC HandelsgmbH

Quellenstraße 110, A-1100 Wien

T. +43(0)1 489 3961-0

F. +43(0)1 489 3961-7

mail@szabo-scandic.com

www.szabo-scandic.com

[linkedin.com/company/szaboscandic](https://www.linkedin.com/company/szaboscandic) 

CDC45L (Human) IP-WB Antibody Pair

Catalog # : H00008318-PW2

規格 : [1 Set]

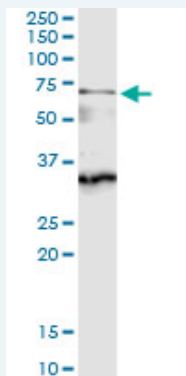
[List All](#)

Specification

Product Description: This IP-WB antibody pair set comes with one antibody for immunoprecipitation and another to detect the precipitated protein in western blot.

Reactivity: Human

Quality Control Testing: Immunoprecipitation-Western Blot (IP-WB)



Immunoprecipitation of CDC45L transfected lysate using rabbit polyclonal anti-CDC45L and Protein A Magnetic Bead ([U0007](#)), and immunoblotted with mouse purified polyclonal anti-CDC45L.

Supplied Product: Antibody pair set content:
1. Antibody pair for IP: rabbit polyclonal anti-CDC45L (300 ul)
2. Antibody pair for WB: mouse purified polyclonal anti-CDC45L (50 ug)

Storage Instruction: Store reagents of the antibody pair set at -20°C or lower. Please aliquot to avoid repeated freeze thaw cycle. Reagents should be returned to -20°C storage immediately after use.

MSDS:  [Download](#)

Applications

Immunoprecipitation-Western Blot

 [Protocol Download](#)

Gene Information

Entrez GeneID: [8318](#)

Gene Name: CDC45L

Gene Alias: CDC45, CDC45L2, PORC-PI-1

Gene Description: CDC45 cell division cycle 45-like (S. cerevisiae)

Omim ID: [603465](#)

Gene Ontology: [Hyperlink](#)

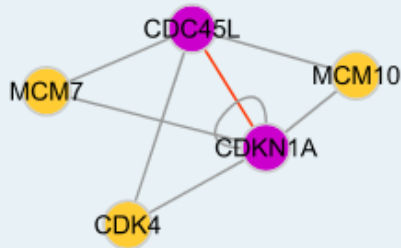
Application Image

Immunoprecipitation-Western Blot

Gene Summary: The protein encoded by this gene was identified by its strong similarity with *Saccharomyces cerevisiae* Cdc45, an essential protein required to the initiation of DNA replication. Cdc45 is a member of the highly conserved multiprotein complex including Cdc6/Cdc18, the minichromosome maintenance proteins (MCMs) and DNA polymerase, which is important for early steps of DNA replication in eukaryotes. This protein has been shown to interact with MCM7 and DNA polymerase alpha. Studies of the similar gene in *Xenopus* suggested that this protein play a pivotal role in the loading of DNA polymerase alpha onto chromatin. Multiple polyadenylation sites of this gene are reported. [provided by RefSeq]

Other Designations: CDC45 (cell division cycle 45, *S.cerevisiae*, homolog)-like, CDC45-like, CDC45-related protein, cell division cycle 45-like 2, human CDC45

Interactome



Gene Pathway

[Cell cycle](#)

Related Disease

[Colorectal Neoplasms Disease Progression](#) [Genetic Predisposition to Disease](#)
[Tobacco Use Disorder](#)