



SZABO SCANDIC

Part of Europa Biosite

Produktinformation



Forschungsprodukte & Biochemikalien



Zellkultur & Verbrauchsmaterial



Diagnostik & molekulare Diagnostik



Laborgeräte & Service

Weitere Information auf den folgenden Seiten!
See the following pages for more information!



Lieferung & Zahlungsart

siehe unsere [Liefer- und Versandbedingungen](#)

Zuschläge

- Mindermengenzuschlag
- Trockeneiszuschlag
- Gefahrgutzuschlag
- Expressversand

SZABO-SCANDIC HandelsgmbH

Quellenstraße 110, A-1100 Wien

T. +43(0)1 489 3961-0

F. +43(0)1 489 3961-7

mail@szabo-scandic.com

www.szabo-scandic.com

[linkedin.com/company/szaboscandic](https://www.linkedin.com/company/szaboscandic) 

PLA2G6 (Human) IP-WB Antibody Pair

Catalog # : H00008398-PW1

規格 : [1 Set]

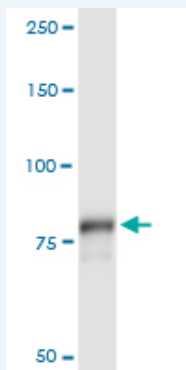
[List All](#)

Specification

Product Description: This IP-WB antibody pair set comes with one antibody for immunoprecipitation and another to detect the precipitated protein in western blot.

Reactivity: Human

Quality Control Testing: Immunoprecipitation-Western Blot (IP-WB)



Immunoprecipitation of PLA2G6 transfected lysate using rabbit polyclonal anti-PLA2G6 and Protein A Magnetic Bead ([U0007](#)), and immunoblotted with mouse purified polyclonal anti-PLA2G6.

Supplied Product: Antibody pair set content:
1. Antibody pair for IP: rabbit polyclonal anti-PLA2G6 (300 ul)
2. Antibody pair for WB: mouse purified polyclonal anti-PLA2G6 (50 ug)

Storage Instruction: Store reagents of the antibody pair set at -20°C or lower. Please aliquot to avoid repeated freeze thaw cycle. Reagents should be returned to -20°C storage immediately after use.

MSDS:  [Download](#)

Applications

Immunoprecipitation-Western Blot

 [Protocol Download](#)

Gene Information

Entrez GeneID: [8398](#)

Gene Name: PLA2G6

Gene Alias: CaI-PLA2, GVI, INAD1, IPLA2-VIA, PARK14, PLA2, PNPLA9, iPLA2

Gene Description: phospholipase A2, group VI (cytosolic, calcium-independent)

Omim ID: [256600](#), [603604](#), [608395](#), [610217](#)

Gene Ontology: [Hyperlink](#)

Application Image

Immunoprecipitation-Western Blot

Gene Summary: The protein encoded by this gene is an A2 phospholipase, a class of enzyme that catalyzes the release of fatty acids from phospholipids. The encoded protein may play a role in phospholipid remodelling, arachidonic acid release, leukotriene and prostaglandin synthesis, fas-mediated apoptosis, and transmembrane ion flux in glucose-stimulated B-cells. Several transcript variants encoding multiple isoforms have been described, but the full-length nature of only two of them have been determined to date. [provided by RefSeq]

Other Designations: OTTHUMP00000028877,calcium-independent phospholipase A2,cytosolic, calcium-independent phospholipase A2,patatin-like phospholipase domain containing 9,phospholipase A2, group VI

Gene Pathway

[alpha-Linolenic acid metabolism](#) [Arachidonic acid metabolism](#) [Ether lipid metabolism](#) [Fc epsilon RI signaling pathway](#) [Fc gamma R-mediated phagocytosis](#) [Glycerophospholipid metabolism](#) [GnRH signaling pathway](#) [Linoleic acid metabolism](#) [Long-term depression](#) [MAPK signaling pathway](#) [Metabolic pathways](#) [Vascular smooth muscle contraction](#) [VEGF signaling pathway](#)

Related Disease

[Alzheimer Disease](#) [Cardiovascular Diseases](#) [Diabetes Mellitus, Type 2](#) [Dystonia](#) [Edema](#) [Frontotemporal Dementia](#) [Genetic Predisposition to Disease](#) [Lung Neoplasms](#) [Melanoma](#) [Neurodegenerative Diseases](#) [Nevus](#) [Parkinson Disease](#) [Parkinsonian Disorders](#) [Precancerous Conditions](#) [Psychotic Disorders](#) [Pulmonary Disease, Chronic Obstructive](#) [Schizophrenia](#) [Schizophrenia](#) [Skin Neoplasms](#)

... see more

[服務條款](#) | [隱私權政策](#) | [著作及商標](#) | [網站地圖](#)

©2016 亞諾法生技股份有限公司 Abnova Corporation. 版權所有.