



SZABO SCANDIC

Part of Europa Biosite

Produktinformation



Forschungsprodukte & Biochemikalien



Zellkultur & Verbrauchsmaterial



Diagnostik & molekulare Diagnostik



Laborgeräte & Service

Weitere Information auf den folgenden Seiten!
See the following pages for more information!



Lieferung & Zahlungsart

siehe unsere [Liefer- und Versandbedingungen](#)

Zuschläge

- Mindermengenzuschlag
- Trockeneiszuschlag
- Gefahrgutzuschlag
- Expressversand

SZABO-SCANDIC HandelsgmbH

Quellenstraße 110, A-1100 Wien

T. +43(0)1 489 3961-0

F. +43(0)1 489 3961-7

mail@szabo-scandic.com

www.szabo-scandic.com

[linkedin.com/company/szaboscandic](https://www.linkedin.com/company/szaboscandic) 

GCM1 (Human) Matched Antibody Pair

Catalog # : H00008521-AP41

規格 : [1 Set]

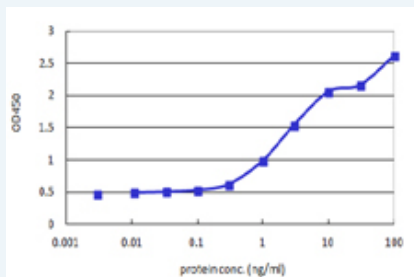
[List All](#)

Specification

Product Description: This antibody pair set comes with matched antibody pair to detect and quantify protein level of human GCM1.

Reactivity: Human

Quality Control Testing: Standard curve using recombinant protein (H00008521-Q01) as an analyte.



Sandwich ELISA detection sensitivity ranging from 0.03 ng/ml to 100 ng/ml.

Supplied Product: Antibody pair set content:
 1. Capture antibody: mouse monoclonal anti-GCM1, IgG2b Kappa (100 ug)
 2. Detection antibody: biotinylated mouse monoclonal anti-GCM1, IgG2a Kappa (50 ug)
 *Reagents are sufficient for at least 3-5 x 96 well plates using recommended protocols.

Storage Instruction: Store reagents of the antibody pair set at -20°C or lower. Please aliquot to avoid repeated freeze thaw cycle. Reagents should be returned to -20°C storage immediately after use.

Applications

ELISA Pair (Recombinant protein)

 [Protocol Download](#)

Gene Information

Entrez GeneID: [8521](#)

Gene Name: GCM1

Gene Alias: GCMA,hGCMA

Gene Description: glial cells missing homolog 1 (Drosophila)

Omim ID: [603715](#)

Gene Ontology: [Hyperlink](#)

Gene Summary: This gene encodes a DNA-binding protein with a gcm-motif (glial cell

missing motif). The encoded protein is a homolog of the Drosophila glial cells missing gene (gcm). This protein binds to the GCM-motif (A/G)CCCGCAT, a novel sequence among known targets of DNA-binding proteins. The N-terminal DNA-binding domain confers the unique DNA-binding activity of this protein. [provided by RefSeq

Other GCM motif protein 1,OTTHUMP00000016631,chorion-specific
Designations: transcription factor GCMA,glial cells missing homolog a

Related Disease

[Alzheimer Disease](#) [Alzheimer disease](#) [Cerebral Amyloid Angiopathy Disease Susceptibility](#)
[Genetic Predisposition to Disease](#) [Glomerulonephritis, IGA](#) [Neuroblastoma](#)

[服務條款](#) | [隱私權政策](#) | [著作及商標](#) | [網站地圖](#)

©2016 亞諾法生技股份有限公司 Abnova Corporation. 版權所有.