



SZABO SCANDIC

Part of Europa Biosite

Produktinformation



Forschungsprodukte & Biochemikalien



Zellkultur & Verbrauchsmaterial



Diagnostik & molekulare Diagnostik



Laborgeräte & Service

Weitere Information auf den folgenden Seiten!
See the following pages for more information!



Lieferung & Zahlungsart

siehe unsere [Liefer- und Versandbedingungen](#)

Zuschläge

- Mindermengenzuschlag
- Trockeneiszuschlag
- Gefahrgutzuschlag
- Expressversand

SZABO-SCANDIC HandelsgmbH

Quellenstraße 110, A-1100 Wien

T. +43(0)1 489 3961-0

F. +43(0)1 489 3961-7

mail@szabo-scandic.com

www.szabo-scandic.com

[linkedin.com/company/szaboscandic](https://www.linkedin.com/company/szaboscandic) 

RIPK2 (Human) Matched Antibody Pair

Catalog # : H00008767-AP51

規格 : [1 Set]

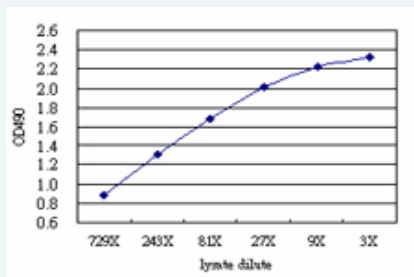
[List All](#)

Specification

Product Description: This antibody pair set comes with matched antibody pair to detect and quantify protein level of human RIPK2.

Reactivity: Human

Quality Control Testing: Standard curve using RIPK2 293T overexpression lysate (non-denatured) as an analyte.



Sandwich ELISA detection sensitivity ranging from approximately 729x to 3x dilution of the RIPK2 293T overexpression lysate (non-denatured).

Supplied Product: Antibody pair set content:
 1. Capture antibody: mouse monoclonal anti-RIPK2 (100 ug)
 2. Detection antibody: rabbit purified polyclonal anti-RIPK2 (50 ug)
 *Reagents are sufficient for at least 3-5 x 96 well plates using recommended protocols.

Storage Instruction: Store reagents of the antibody pair set at -20°C or lower. Please aliquot to avoid repeated freeze thaw cycle. Reagents should be returned to -20°C storage immediately after use.

MSDS:  [Download](#)

Applications

ELISA Pair (Transfected lysate)

 [Protocol Download](#)

Gene Information

Entrez GeneID: [8767](#)

Gene Name: RIPK2

Gene Alias: CARD3,CARDIAK,CCK,GIG30,RICK,RIP2

Gene Description: receptor-interacting serine-threonine kinase 2

Omim ID: [603455](#)

Gene Ontology: [Hyperlink](#)

Application Image

ELISA Pair (Transfected lysate)

Gene Summary: This gene encodes a member of the receptor-interacting protein (RIP) family of serine/threonine protein kinases. The encoded protein contains a C-terminal caspase activation and recruitment domain (CARD), and is a component of signaling complexes in both the innate and adaptive immune pathways. It is a potent activator of NF-kappaB and inducer of apoptosis in response to various stimuli. [provided by RefSeq]

Other Designations: CARD-carrying kinase, CARD-containing interleukin-1 beta-converting enzyme (ICE)-associated kinase, growth-inhibiting gene 30, receptor interacting protein 2, receptor-interacting protein (RIP)-like interacting caspase-like apoptosis regulatory protein (CLARP)

Gene Pathway

[Neurotrophin signaling pathway](#)

Related Disease

[Genetic Predisposition to Disease](#) [Hematologic Diseases](#) [Hodgkin Disease](#) [Leprosy](#), [Multibacillary Leprosy](#), [Paucibacillary Lymphoma](#), [B-Cell Lymphoma](#), [Follicular Lymphoma](#), [Large B-Cell](#), [Diffuse Lymphoproliferative Disorders](#) [Occupational Diseases](#) [Waldenstrom Macroglobulinemia](#) [Werner syndrome](#)

[服務條款](#) | [隱私權政策](#) | [著作及商標](#) | [網站地圖](#)

©2016 亞諾法生技股份有限公司 Abnova Corporation. 版權所有.