



SZABO SCANDIC

Part of Europa Biosite

Produktinformation



Forschungsprodukte & Biochemikalien



Zellkultur & Verbrauchsmaterial



Diagnostik & molekulare Diagnostik



Laborgeräte & Service

Weitere Information auf den folgenden Seiten!
See the following pages for more information!



Lieferung & Zahlungsart

siehe unsere [Liefer- und Versandbedingungen](#)

Zuschläge

- Mindermengenzuschlag
- Trockeneiszuschlag
- Gefahrgutzuschlag
- Expressversand

SZABO-SCANDIC HandelsgmbH

Quellenstraße 110, A-1100 Wien

T. +43(0)1 489 3961-0

F. +43(0)1 489 3961-7

mail@szabo-scandic.com

www.szabo-scandic.com

[linkedin.com/company/szaboscandic](https://www.linkedin.com/company/szaboscandic) 

TSC22D1 (Human) IP-WB Antibody Pair

Catalog # : H00008848-PW1

規格 : [1 Set]

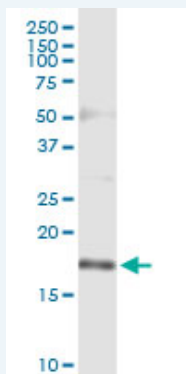
[List All](#)

Specification

Product Description: This IP-WB antibody pair set comes with one antibody for immunoprecipitation and another to detect the precipitated protein in western blot.

Reactivity: Human

Quality Control Testing: Immunoprecipitation-Western Blot (IP-WB)



Immunoprecipitation of TSC22D1 transfected lysate using rabbit polyclonal anti-TSC22D1 and Protein A Magnetic Bead (U0007), and immunoblotted with mouse purified polyclonal anti-TSC22D1.

Supplied Product: Antibody pair set content:
 1. Antibody pair for IP: rabbit polyclonal anti-TSC22D1 (300 ul)
 2. Antibody pair for WB: mouse purified polyclonal anti-TSC22D1 (50 ug)

Storage Instruction: Store reagents of the antibody pair set at -20°C or lower. Please aliquot to avoid repeated freeze thaw cycle. Reagents should be returned to -20°C storage immediately after use.

MSDS: [Download](#)

Applications

Immunoprecipitation-Western Blot

[Protocol Download](#)

Gene Information

Entrez GeneID: [8848](#)

Gene Name: TSC22D1

Gene Alias: DKFZp686O19206,MGC17597,RP11-269C23.2,TGFB14,TSC22

Gene Description: TSC22 domain family, member 1

Omim ID: [607715](#)

Gene Ontology: [Hyperlink](#)

Gene Summary: TSC22D1 encodes a transcription factor and belongs to the large family of early response genes.[supplied by OMIM]

Other Designations: OTTHUMP00000040978,TSC22 domain family 1, isoform 2,transforming growth factor beta 1 induced transcript 4,transforming growth factor beta-stimulated protein TSC-22

Related Disease

[Diabetes Mellitus, Type 2](#) [Diabetic Nephropathies](#) [Diabetic Retinopathy](#)
[Genetic Predisposition to Disease](#)

[服務條款](#) | [隱私權政策](#) | [著作及商標](#) | [網站地圖](#)

©2016 亞諾法生技股份有限公司 Abnova Corporation. 版權所有.