



SZABO SCANDIC

Part of Europa Biosite

Produktinformation



Forschungsprodukte & Biochemikalien



Zellkultur & Verbrauchsmaterial



Diagnostik & molekulare Diagnostik



Laborgeräte & Service

Weitere Information auf den folgenden Seiten!
See the following pages for more information!



Lieferung & Zahlungsart

siehe unsere [Liefer- und Versandbedingungen](#)

Zuschläge

- Mindermengenzuschlag
- Trockeneiszuschlag
- Gefahrgutzuschlag
- Expressversand

SZABO-SCANDIC HandelsgmbH

Quellenstraße 110, A-1100 Wien

T. +43(0)1 489 3961-0

F. +43(0)1 489 3961-7

mail@szabo-scandic.com

www.szabo-scandic.com

[linkedin.com/company/szaboscandic](https://www.linkedin.com/company/szaboscandic) 

PER3 (Human) IP-WB Antibody Pair

Catalog # : H00008863-PW1

規格 : [1 Set]

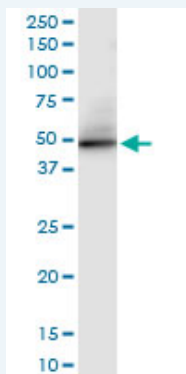
[List All](#)

Specification

Product Description: This IP-WB antibody pair set comes with one antibody for immunoprecipitation and another to detect the precipitated protein in western blot.

Reactivity: Human

Quality Control Testing: Immunoprecipitation-Western Blot (IP-WB)



Immunoprecipitation of PER3 transfected lysate using rabbit polyclonal anti-PER3 and Protein A Magnetic Bead (U0007), and immunoblotted with mouse purified polyclonal anti-PER3.

Supplied Product: Antibody pair set content:
1. Antibody pair for IP: rabbit polyclonal anti-PER3 (300 ul)
2. Antibody pair for WB: mouse purified polyclonal anti-PER3 (50 ug)

Storage Instruction: Store reagents of the antibody pair set at -20°C or lower. Please aliquot to avoid repeated freeze thaw cycle. Reagents should be returned to -20°C storage immediately after use.

MSDS:  [Download](#)

Applications

Immunoprecipitation-Western Blot

 [Protocol Download](#)

Gene Information

Entrez GeneID: [8863](#)

Gene Name: PER3

Gene Alias: GIG13

Gene Description: period homolog 3 (Drosophila)

Omim ID: [603427](#)

Gene Ontology: [Hyperlink](#)

Application Image

Immunoprecipitation-Western Blot

Gene Summary: This gene is a member of the Period family of genes and is expressed in a circadian pattern in the suprachiasmatic nucleus, the primary circadian pacemaker in the mammalian brain. Genes in this family encode components of the circadian rhythms of locomotor activity, metabolism, and behavior. Circadian expression in the suprachiasmatic nucleus continues in constant darkness, and a shift in the light/dark cycle evokes a proportional shift of gene expression in the suprachiasmatic nucleus. The specific function of this gene is not yet known. [provided by RefSeq]

Other Designations: OTTHUMP0000001354,growth-inhibiting protein 13,period 3,period circadian protein 3

Gene Pathway

[Circadian rhythm - mammal](#)

Related Disease

[Arousal](#) [Attention](#) [Bipolar Disorder](#) [Cardiovascular Diseases](#) [Choice Behavior](#) [Chronobiology Disorders](#) [Cognition](#) [Depressive Disorder](#) [Depressive Disorder, Major](#) [Diabetes Mellitus, Type 2](#) [Edema](#) [Fatigue](#) [Genetic Predisposition to Disease](#) [Genetics, Behavioral](#) [Heroin Dependence](#) [Inflammation](#) [Mental Recall](#) [Mood Disorders](#) [Neuropsychological Tests](#)

... see more

[服務條款](#) | [隱私權政策](#) | [著作及商標](#) | [網站地圖](#)

©2016 亞諾法生技股份有限公司 Abnova Corporation. 版權所有.