



SZABO SCANDIC

Part of Europa Biosite

Produktinformation



Forschungsprodukte & Biochemikalien



Zellkultur & Verbrauchsmaterial



Diagnostik & molekulare Diagnostik



Laborgeräte & Service

Weitere Information auf den folgenden Seiten!
See the following pages for more information!



Lieferung & Zahlungsart

siehe unsere [Liefer- und Versandbedingungen](#)

Zuschläge

- Mindermengenzuschlag
- Trockeneiszuschlag
- Gefahrgutzuschlag
- Expressversand

SZABO-SCANDIC HandelsgmbH

Quellenstraße 110, A-1100 Wien

T. +43(0)1 489 3961-0

F. +43(0)1 489 3961-7

mail@szabo-scandic.com

www.szabo-scandic.com

[linkedin.com/company/szaboscandic](https://www.linkedin.com/company/szaboscandic) 

NAE1 (Human) IP-WB Antibody Pair

Catalog # : H00008883-PW1

規格 : [1 Set]

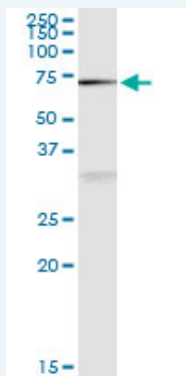
[List All](#)

Specification

Product Description: This IP-WB antibody pair set comes with one antibody for immunoprecipitation and another to detect the precipitated protein in western blot.

Reactivity: Human

Quality Control Testing: Immunoprecipitation-Western Blot (IP-WB)



Immunoprecipitation of NAE1 transfected lysate using rabbit polyclonal anti-NAE1 and Protein A Magnetic Bead ([U0007](#)), and immunoblotted with mouse purified polyclonal anti-NAE1.

Supplied Product: Antibody pair set content:
 1. Antibody pair for IP: rabbit polyclonal anti-NAE1 (300 ul)
 2. Antibody pair for WB: mouse purified polyclonal anti-NAE1 (50 ug)

Storage Instruction: Store reagents of the antibody pair set at -20°C or lower. Please aliquot to avoid repeated freeze thaw cycle. Reagents should be returned to -20°C storage immediately after use.

MSDS:  [Download](#)

Applications

Immunoprecipitation-Western Blot

 [Protocol Download](#)

Gene Information

Entrez GeneID: [8883](#)

Gene Name: NAE1

Gene Alias: A-116A10.1,APPBP1,HPP1,ula-1

Gene Description: NEDD8 activating enzyme E1 subunit 1

Omim ID: [603385](#)

Gene Ontology: [Hyperlink](#)

Application Image

Immunoprecipitation-Western Blot

Gene Summary: The protein encoded by this gene binds to the beta-amyloid precursor protein. Beta-amyloid precursor protein is a cell surface protein with signal-transducing properties, and it is thought to play a role in the pathogenesis of Alzheimer's disease. In addition, the encoded protein can form a heterodimer with UBE1C and bind and activate NEDD8, a ubiquitin-like protein. This protein is required for cell cycle progression through the S/M checkpoint. Three transcript variants encoding different isoforms have been found for this gene. [provided by RefSeq]

Other Designations: NEDD8-activating enzyme E1 subunit, amyloid beta precursor protein binding protein 1, 59kDa, amyloid beta precursor protein-binding protein 1, 59kD, amyloid protein-binding protein 1, protooncogene protein 1

Gene Pathway

[Alzheimer's disease](#)

[服務條款](#) | [隱私權政策](#) | [著作及商標](#) | [網站地圖](#)

©2016 亞諾法生技股份有限公司 Abnova Corporation. 版權所有.