



SZABO SCANDIC

Part of Europa Biosite

Produktinformation



Forschungsprodukte & Biochemikalien



Zellkultur & Verbrauchsmaterial



Diagnostik & molekulare Diagnostik



Laborgeräte & Service

Weitere Information auf den folgenden Seiten!
See the following pages for more information!



Lieferung & Zahlungsart

siehe unsere [Liefer- und Versandbedingungen](#)

Zuschläge

- Mindermengenzuschlag
- Trockeneiszuschlag
- Gefahrgutzuschlag
- Expressversand

SZABO-SCANDIC HandelsgmbH

Quellenstraße 110, A-1100 Wien

T. +43(0)1 489 3961-0

F. +43(0)1 489 3961-7

mail@szabo-scandic.com

www.szabo-scandic.com

[linkedin.com/company/szaboscandic](https://www.linkedin.com/company/szaboscandic) 

EXO1 (Human) IP-WB Antibody Pair

Catalog # : H00009156-PW2

規格 : [1 Set]

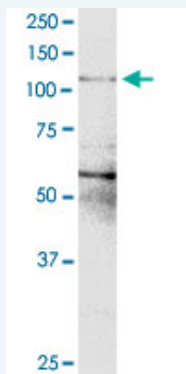
[List All](#)

Specification

Product Description: This IP-WB antibody pair set comes with one antibody for immunoprecipitation and another to detect the precipitated protein in western blot.

Reactivity: Human

Quality Control Testing: Immunoprecipitation-Western Blot (IP-WB)



Immunoprecipitation of EXO1 transfected lysate using rabbit polyclonal anti-EXO1 and Protein A Magnetic Bead ([U0007](#)), and immunoblotted with mouse purified polyclonal anti-EXO1.

Supplied Product: Antibody pair set content:
 1. Antibody pair for IP: rabbit polyclonal anti-EXO1 (300 ul)
 2. Antibody pair for WB: mouse purified polyclonal anti-EXO1 (50 ug)

Storage Instruction: Store reagents of the antibody pair set at -20°C or lower. Please aliquot to avoid repeated freeze thaw cycle. Reagents should be returned to -20°C storage immediately after use.

Applications

Immunoprecipitation-Western Blot

 [Protocol Download](#)

Gene Information

Entrez GeneID: [9156](#)

Gene Name: EXO1

Gene Alias: HEX1,hExoI

Gene Description: exonuclease 1

Omim ID: [606063](#)

Gene Ontology: [Hyperlink](#)

Gene Summary: This gene encodes a protein with 5' to 3' exonuclease activity as well as

an RNase H activity. It is similar to the *Saccharomyces cerevisiae* protein Exo1 which interacts with Msh2 and which is involved in mismatch repair and recombination. Alternative splicing of this gene results in three transcript variants encoding two different isoforms.
[provided by RefSeq]

Other Designations: OTTHUMP00000037878,OTTHUMP00000037879,rad2 nuclease family member, homolog of *S. cerevisiae* exonuclease 1

Gene Pathway

[Mismatch repair](#)

Related Disease

[Adenocarcinoma](#) [Brain Neoplasms](#) [Breast cancer](#) [Breast Neoplasms](#)
[Carcinoma, Non-Small-Cell Lung](#) [Carcinoma, Small Cell](#) [Colorectal Neoplasms](#)
[Colorectal Neoplasms, Hereditary Nonpolyposis](#) [Disease Progression](#) [DNA Damage](#)
[Esophageal Neoplasms](#) [Genetic Predisposition to Disease](#) [Glioblastoma](#)
[Kidney Failure, Chronic](#) [Lung carcinoma, small cell](#) [Lung Neoplasms](#) [Meningeal Neoplasms](#)
[Meningioma](#) [Multiple Sclerosis](#)

... see more

[服務條款](#) | [隱私權政策](#) | [著作及商標](#) | [網站地圖](#)

©2016 亞諾法生技股份有限公司 Abnova Corporation. 版權所有.