



SZABO SCANDIC

Part of Europa Biosite

Produktinformation



Forschungsprodukte & Biochemikalien



Zellkultur & Verbrauchsmaterial



Diagnostik & molekulare Diagnostik



Laborgeräte & Service

Weitere Information auf den folgenden Seiten!
See the following pages for more information!



Lieferung & Zahlungsart

siehe unsere [Liefer- und Versandbedingungen](#)

Zuschläge

- Mindermengenzuschlag
- Trockeneiszuschlag
- Gefahrgutzuschlag
- Expressversand

SZABO-SCANDIC HandelsgmbH

Quellenstraße 110, A-1100 Wien

T. +43(0)1 489 3961-0

F. +43(0)1 489 3961-7

mail@szabo-scandic.com

www.szabo-scandic.com

[linkedin.com/company/szaboscandic](https://www.linkedin.com/company/szaboscandic) 

MAP3K13 (Human) Matched Antibody Pair

Catalog # : H00009175-AP51

規格 : [1 Set]

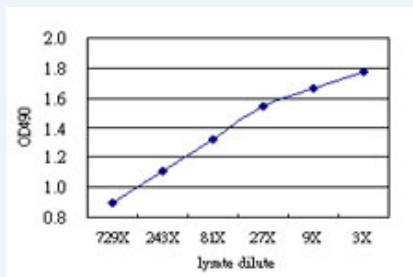
[List All](#)

Specification

Product Description: This antibody pair set comes with matched antibody pair to detect and quantify protein level of human MAP3K13.

Reactivity: Human

Quality Control Testing: Standard curve using MAP3K13 293T overexpression lysate (non-denatured) as an analyte.



Sandwich ELISA detection sensitivity ranging from approximately 729x to 3x dilution of the MAP3K13 293T overexpression lysate (non-denatured).

Supplied Product: Antibody pair set content:
 1. Capture antibody: mouse monoclonal anti-MAP3K13 (100 ug)
 2. Detection antibody: rabbit purified polyclonal anti-MAP3K13 (50 ug)
 *Reagents are sufficient for at least 3-5 x 96 well plates using recommended protocols.

Storage Instruction: Store reagents of the antibody pair set at -20°C or lower. Please aliquot to avoid repeated freeze thaw cycle. Reagents should be returned to -20°C storage immediately after use.

MSDS:  [Download](#)

Applications

ELISA Pair (Transfected lysate)

 [Protocol Download](#)

Gene Information

Entrez GeneID: [9175](#)

Gene Name: MAP3K13

Gene Alias: LZK,MGC133196

Gene Description: mitogen-activated protein kinase kinase kinase 13

Omim ID: [604915](#)

Gene Ontology: [Hyperlink](#)

Application Image

ELISA Pair (Transfected lysate)

Gene Summary: The protein encoded by this gene is a member of serine/threonine protein kinase family. This kinase contains a dual leucine-zipper motif, and has been shown to form dimers/oligomers through its leucine-zipper motif. This kinase can phosphorylate and activate MAPK8/JNK, MAP2K7/MKK7, which suggests a role in the JNK signaling pathway. [provided by RefSeq]

Other Designations: leucine zipper-bearing kinase

Gene Pathway

[MAPK signaling pathway](#)

Related Disease

[Tobacco Use Disorder](#)

[服務條款](#) | [隱私權政策](#) | [著作及商標](#) | [網站地圖](#)

©2016 亞諾法生技股份有限公司 Abnova Corporation. 版權所有.