



SZABO SCANDIC

Part of Europa Biosite

Produktinformation



Forschungsprodukte & Biochemikalien



Zellkultur & Verbrauchsmaterial



Diagnostik & molekulare Diagnostik



Laborgeräte & Service

Weitere Information auf den folgenden Seiten!
See the following pages for more information!



Lieferung & Zahlungsart

siehe unsere [Liefer- und Versandbedingungen](#)

Zuschläge

- Mindermengenzuschlag
- Trockeneiszuschlag
- Gefahrgutzuschlag
- Expressversand

SZABO-SCANDIC HandelsgmbH

Quellenstraße 110, A-1100 Wien

T. +43(0)1 489 3961-0

F. +43(0)1 489 3961-7

mail@szabo-scandic.com

www.szabo-scandic.com

[linkedin.com/company/szaboscandic](https://www.linkedin.com/company/szaboscandic) 

RPS6KA5 (Human) Matched Antibody Pair

Catalog # : H00009252-AP11

規格 : [1 Set]

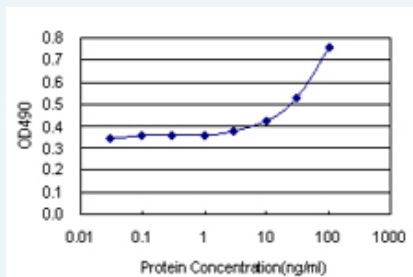
[List All](#)

Specification

Product Description: This antibody pair set comes with matched antibody pair to detect and quantify protein level of human RPS6KA5.

Reactivity: Human

Quality Control Testing: Standard curve using recombinant protein (H00009252-P01) as an analyte.



Sandwich ELISA detection sensitivity ranging from 10 ng/ml to 100 ng/ml.

Supplied Product: Antibody pair set content:
 1. Capture antibody: rabbit MaxPab® affinity purified polyclonal anti-RPS6KA5 (100 ug)
 2. Detection antibody: mouse monoclonal anti-RPS6KA5, IgG2b Lambda (20 ug)
 *Reagents are sufficient for at least 1-2 x 96 well plates using recommended protocols.

Storage Instruction: Store reagents of the antibody pair set at -20°C or lower. Please aliquot to avoid repeated freeze thaw cycle. Reagents should be returned to -20°C storage immediately after use.

MSDS:  [Download](#)

Applications

ELISA Pair (Recombinant protein)

 [Protocol Download](#)

Gene Information

Entrez GeneID: [9252](#)

Gene Name: RPS6KA5

Gene Alias: MGC1911,MSK1,MSPK1,RLPK

Gene Description: ribosomal protein S6 kinase, 90kDa, polypeptide 5

Omim ID: [603607](#)

Gene Ontology: [Hyperlink](#)

Application Image

ELISA Pair (Recombinant protein)

Other mitogen- and stress-activated protein kinase 1, ribosomal protein S6
Designations: kinase, 90kD, polypeptide 5

Gene Pathway

[Bladder cancer](#) [MAPK signaling pathway](#) [Neurotrophin signaling pathway](#)

Related Disease

[Genetic Predisposition to Disease](#) [Tobacco Use Disorder](#) [Urinary Bladder Neoplasms](#)

[服務條款](#) | [隱私權政策](#) | [著作及商標](#) | [網站地圖](#)

©2016 亞諾法生技股份有限公司 Abnova Corporation. 版權所有.