



SZABO SCANDIC

Part of Europa Biosite

Produktinformation



Forschungsprodukte & Biochemikalien



Zellkultur & Verbrauchsmaterial



Diagnostik & molekulare Diagnostik



Laborgeräte & Service

Weitere Information auf den folgenden Seiten!
See the following pages for more information!



Lieferung & Zahlungsart

siehe unsere [Liefer- und Versandbedingungen](#)

Zuschläge

- Mindermengenzuschlag
- Trockeneiszuschlag
- Gefahrgutzuschlag
- Expressversand

SZABO-SCANDIC HandelsgmbH

Quellenstraße 110, A-1100 Wien

T. +43(0)1 489 3961-0

F. +43(0)1 489 3961-7

mail@szabo-scandic.com

www.szabo-scandic.com

[linkedin.com/company/szaboscandic](https://www.linkedin.com/company/szaboscandic) 

LIPG (Human) IP-WB Antibody Pair

Catalog # : H00009388-PW1

規格 : [1 Set]

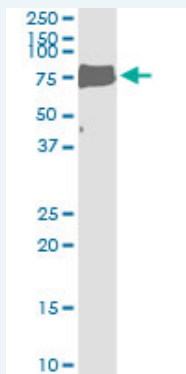
[List All](#)

Specification

Product Description: This IP-WB antibody pair set comes with one antibody for immunoprecipitation and another to detect the precipitated protein in western blot.

Reactivity: Human

Quality Control Testing: Immunoprecipitation-Western Blot (IP-WB)



Immunoprecipitation of LIPG transfected lysate using mouse monoclonal anti-LIPG and Protein A Magnetic Bead ([U000Z](#)), and immunoblotted with rabbit polyclonal anti-LIPG.

Supplied Product: Antibody pair set content:
1. Antibody pair for IP: mouse monoclonal anti-LIPG (300 ug)
2. Antibody pair for WB: rabbit polyclonal anti-LIPG (50 ul)

Storage Instruction: Store reagents of the antibody pair set at -20°C or lower. Please aliquot to avoid repeated freeze thaw cycle. Reagents should be returned to -20°C storage immediately after use.

MSDS:  [Download](#)

Applications

Immunoprecipitation-Western Blot

 [Protocol Download](#)

Gene Information

Entrez GeneID: [9388](#)

Gene Name: LIPG

Gene Alias: EDL,EL,PRO719

Gene Description: lipase, endothelial

Omim ID: [603684](#)

Gene Ontology: [Hyperlink](#)

Application Image

Immunoprecipitation-Western Blot

Gene Summary: The protein encoded by this gene has substantial phospholipase activity and may be involved in lipoprotein metabolism and vascular biology. This protein is designated a member of the TG lipase family by its sequence and characteristic lid region which provides substrate specificity for enzymes of the TG lipase family. [provided by RefSeq]

Other Designations: [endothelial cell-derived lipase](#),[endothelial lipase](#),[lipoprotein lipase H](#)

Gene Pathway

[Glycerolipid metabolism](#) [Metabolic pathways](#)

Related Disease

[Acute Disease](#) [Alzheimer Disease](#) [Atherosclerosis](#) [Atherosclerosis](#) [Calcinosis](#)
[Cardiovascular Diseases](#) [Cerebral Infarction](#) [Coronary Artery Disease](#) [Coronary Disease](#)
[Dementia](#) [Diabetes Mellitus](#) [Diabetes Mellitus, Type 2](#) [Drug Toxicity](#) [Dyslipidemias](#) [Edema](#)
[Genetic Predisposition to Disease](#) [HIV Infections](#) [Hypercholesterolemia](#) [Hypertension](#)

... see more

[服務條款](#) | [隱私權政策](#) | [著作及商標](#) | [網站地圖](#)

©2016 亞諾法生技股份有限公司 Abnova Corporation. 版權所有.