



SZABO SCANDIC

Part of Europa Biosite

Produktinformation



Forschungsprodukte & Biochemikalien



Zellkultur & Verbrauchsmaterial



Diagnostik & molekulare Diagnostik



Laborgeräte & Service

Weitere Information auf den folgenden Seiten!
See the following pages for more information!



Lieferung & Zahlungsart

siehe unsere [Liefer- und Versandbedingungen](#)

Zuschläge

- Mindermengenzuschlag
- Trockeneiszuschlag
- Gefahrgutzuschlag
- Expressversand

SZABO-SCANDIC HandelsgmbH

Quellenstraße 110, A-1100 Wien

T. +43(0)1 489 3961-0

F. +43(0)1 489 3961-7

mail@szabo-scandic.com

www.szabo-scandic.com

[linkedin.com/company/szaboscandic](https://www.linkedin.com/company/szaboscandic) 

GRAP2 (Human) Matched Antibody Pair

Catalog # : H00009402-AP51

規格 : [1 Set]

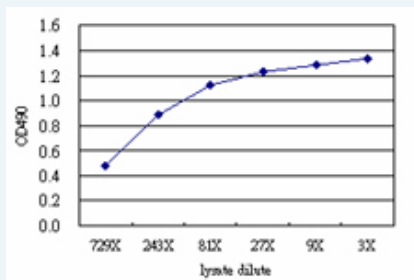
[List All](#)

Specification

Product Description: This antibody pair set comes with matched antibody pair to detect and quantify protein level of human GRAP2.

Reactivity: Human

Quality Control Testing: Standard curve using GRAP2 293T overexpression lysate (non-denatured) as an analyte.



Sandwich ELISA detection sensitivity ranging from approximately 729x to 3x dilution of the GRAP2 293T overexpression lysate (non-denatured).

Supplied Product: Antibody pair set content:
 1. Capture antibody: mouse monoclonal anti-GRAP2 (100 ug)
 2. Detection antibody: rabbit purified polyclonal anti-GRAP2 (50 ug)
 *Reagents are sufficient for at least 3-5 x 96 well plates using recommended protocols.

Storage Instruction: Store reagents of the antibody pair set at -20°C or lower. Please aliquot to avoid repeated freeze thaw cycle. Reagents should be returned to -20°C storage immediately after use.

MSDS:  [Download](#)

Applications

ELISA Pair (Transfected lysate)

 [Protocol Download](#)

Gene Information

Entrez GeneID: [9402](#)

Gene Name: GRAP2

Gene Alias: GADS, GRAP-2, GRB2L, GRBLG, GRID, GRPL, GrbX, Grf40, Mona, P38

Gene Description: GRB2-related adaptor protein 2

Omim ID: [604518](#)

Gene Ontology: [Hyperlink](#)

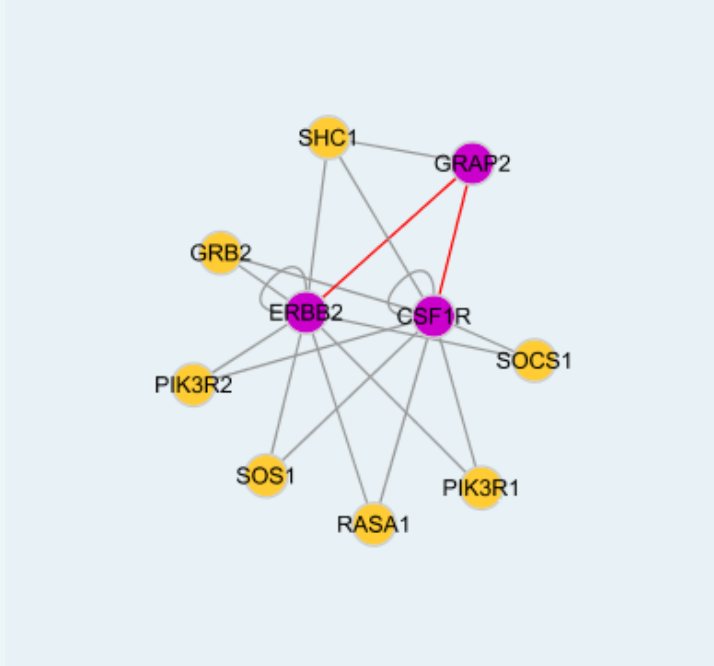
Application Image

ELISA Pair (Transfected lysate)

Gene Summary: This gene encodes a member of the GRB2/Sem5/Drk family. This member is an adaptor-like protein involved in leukocyte-specific protein-tyrosine kinase signaling. Like its related family member, GRB2-related adaptor protein (GRAP), this protein contains an SH2 domain flanked by two SH3 domains. This protein interacts with other proteins, such as GRB2-associated binding protein 1 (GAB1) and the SLP-76 leukocyte protein (LCP2), through its SH3 domains. Transcript variants utilizing alternative polyA sites exist. [provided by RefSeq]

Other Designations: GRB-2-like protein, GRB2-related protein with insert domain, OTTHUMP00000028837, SH3-SH2-SH3 adaptor molecule, growth factor receptor-binding protein, growth factor receptor-bound protein 2-related adaptor protein 2, hematopoietic cell-associated adaptor protei

Interactome



Gene Pathway

[T cell receptor signaling pathway](#)

Related Disease

[Carcinoma, Hepatocellular](#) [Disease Progression](#) [Genetic Predisposition to Disease](#)
[Hepatitis C](#) [Liver Neoplasms](#) [Tobacco Use Disorder](#) [Viremia](#)

[服務條款](#) | [隱私權政策](#) | [著作及商標](#) | [網站地圖](#)

©2016 亞諾法生技股份有限公司 Abnova Corporation. 版權所有.