



# SZABO SCANDIC

Part of Europa Biosite

## Produktinformation



Forschungsprodukte & Biochemikalien



Zellkultur & Verbrauchsmaterial



Diagnostik & molekulare Diagnostik



Laborgeräte & Service

Weitere Information auf den folgenden Seiten!  
See the following pages for more information!



### Lieferung & Zahlungsart

siehe unsere [Liefer- und Versandbedingungen](#)

### Zuschläge

- Mindermengenzuschlag
- Trockeneiszuschlag
- Gefahrgutzuschlag
- Expressversand

### SZABO-SCANDIC HandelsgmbH

Quellenstraße 110, A-1100 Wien

T. +43(0)1 489 3961-0

F. +43(0)1 489 3961-7

[mail@szabo-scandic.com](mailto:mail@szabo-scandic.com)

[www.szabo-scandic.com](http://www.szabo-scandic.com)

[linkedin.com/company/szaboscandic](https://www.linkedin.com/company/szaboscandic) 

## GRAP2 (Human) IP-WB Antibody Pair

Catalog # : H00009402-PW2

規格 : [ 1 Set ]

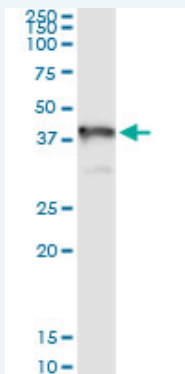
List All

### Specification

**Product Description:** This IP-WB antibody pair set comes with one antibody for immunoprecipitation and another to detect the precipitated protein in western blot.

**Reactivity:** Human

**Quality Control Testing:** Immunoprecipitation-Western Blot (IP-WB)



Immunoprecipitation of GRAP2 transfected lysate using rabbit polyclonal anti-GRAP2 and Protein A Magnetic Bead (U0007), and immunoblotted with mouse purified polyclonal anti-GRAP2.

**Supplied Product:** Antibody pair set content:  
1. Antibody pair for IP: rabbit polyclonal anti-GRAP2 (300 ul)  
2. Antibody pair for WB: mouse purified polyclonal anti-GRAP2 (50 ug)

**Storage Instruction:** Store reagents of the antibody pair set at -20°C or lower. Please aliquot to avoid repeated freeze thaw cycle. Reagents should be returned to -20°C storage immediately after use.

**MSDS:**  [Download](#)

### Applications

Immunoprecipitation-Western Blot

 [Protocol Download](#)

### Gene Information

**Entrez GeneID:** [9402](#)

**Gene Name:** GRAP2

**Gene Alias:** GADS, GRAP-2, GRB2L, GRBLG, GRID, GRPL, GrbX, Grf40, Mona, P38

**Gene Description:** GRB2-related adaptor protein 2

**Omim ID:** [604518](#)

**Gene Ontology:** [Hyperlink](#)

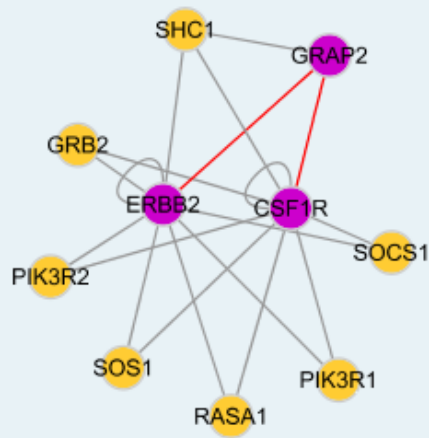
### Application Image

Immunoprecipitation-Western Blot

**Gene Summary:** This gene encodes a member of the GRB2/Sem5/Drk family. This member is an adaptor-like protein involved in leukocyte-specific protein-tyrosine kinase signaling. Like its related family member, GRB2-related adaptor protein (GRAP), this protein contains an SH2 domain flanked by two SH3 domains. This protein interacts with other proteins, such as GRB2-associated binding protein 1 (GAB1) and the SLP-76 leukocyte protein (LCP2), through its SH3 domains. Transcript variants utilizing alternative polyA sites exist. [provided by RefSeq]

**Other Designations:** GRB-2-like protein,GRB2-related protein with insert domain,OTTHUMP00000028837,SH3-SH2-SH3 adaptor molecule,growth factor receptor-binding protein,growth factor receptor-bound protein 2-related adaptor protein 2,hematopoietic cell-associated adaptor protei

### Interactome



### Gene Pathway

[T cell receptor signaling pathway](#)

### Related Disease

[Carcinoma, Hepatocellular](#) [Disease Progression](#) [Genetic Predisposition to Disease](#)  
[Hepatitis C](#) [Liver Neoplasms](#) [Tobacco Use Disorder](#) [Viremia](#)

[服務條款](#) | [隱私權政策](#) | [著作及商標](#) | [網站地圖](#)

©2016 亞諾法生技股份有限公司 Abnova Corporation. 版權所有.