



SZABO SCANDIC

Part of Europa Biosite

Produktinformation



Forschungsprodukte & Biochemikalien



Zellkultur & Verbrauchsmaterial



Diagnostik & molekulare Diagnostik



Laborgeräte & Service

Weitere Information auf den folgenden Seiten!
See the following pages for more information!



Lieferung & Zahlungsart

siehe unsere [Liefer- und Versandbedingungen](#)

Zuschläge

- Mindermengenzuschlag
- Trockeneiszuschlag
- Gefahrgutzuschlag
- Expressversand

SZABO-SCANDIC HandelsgmbH

Quellenstraße 110, A-1100 Wien

T. +43(0)1 489 3961-0

F. +43(0)1 489 3961-7

mail@szabo-scandic.com

www.szabo-scandic.com

[linkedin.com/company/szaboscandic](https://www.linkedin.com/company/szaboscandic) 

GSTO1 (Human) IP-WB Antibody Pair

Catalog # : H00009446-PW1

規格 : [1 Set]

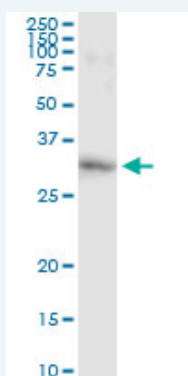
List All

Specification

Product Description: This IP-WB antibody pair set comes with one antibody for immunoprecipitation and another to detect the precipitated protein in western blot.

Reactivity: Human

Quality Control Testing: Immunoprecipitation-Western Blot (IP-WB)



Immunoprecipitation of GSTO1 transfected lysate using mouse monoclonal anti-GSTO1 and Protein A Magnetic Bead ([U0007](#)), and immunoblotted with rabbit polyclonal anti-GSTO1.

Supplied Product: Antibody pair set content:
1. Antibody pair for IP: mouse monoclonal anti-GSTO1 (300 ug)
2. Antibody pair for WB: rabbit polyclonal anti-GSTO1 (50 ul)

Storage Instruction: Store reagents of the antibody pair set at -20°C or lower. Please aliquot to avoid repeated freeze thaw cycle. Reagents should be returned to -20°C storage immediately after use.

MSDS:  [Download](#)

Applications

Immunoprecipitation-Western Blot

 [Protocol Download](#)

Gene Information

Entrez GeneID: [9446](#)

Gene Name: GSTO1

Gene Alias: DKFZp686H13163,GSTTLp28,P28

Gene Description: glutathione S-transferase omega 1

Omim ID: [605482](#)

Gene Ontology: [Hyperlink](#)

Application Image

Immunoprecipitation-Western Blot

Gene Summary: This gene encodes a member of the theta class glutathione S-transferase-like (GSTTL) protein family. In mouse, the encoded protein acts as a small stress response protein, likely involved in cellular redox homeostasis. [provided by RefSeq]

Other Designations: OTTHUMP00000020429,glutathione S-transferase omega 1-1,glutathione transferase omega 1,glutathione-S-transferase like,glutathione-S-transferase omega 1

Gene Pathway

[Drug metabolism - cytochrome P450](#) [Glutathione metabolism](#)
[Metabolism of xenobiotics by cytochrome P450](#)

Related Disease

[Adenoma](#) [Alzheimer Disease](#) [Alzheimer disease](#) [Amphetamine-Related Disorders](#)
[Amyotrophic Lateral Sclerosis](#) [Amyotrophic lateral sclerosis](#) [Arsenic Poisoning](#) [Asthma](#)
[Atherosclerosis](#) [Bile Duct Neoplasms](#) [Brain Ischemia](#) [Breast cancer](#) [Breast Neoplasms](#)
[Carcinoma](#) [Carcinoma, Hepatocellular](#) [Carcinoma, Papillary](#) [Cardiovascular Diseases](#)
[Carotid Artery Diseases](#) [Cerebrovascular Accident](#)

... see more

[服務條款](#) | [隱私權政策](#) | [著作及商標](#) | [網站地圖](#)

©2016 亞諾法生技股份有限公司 Abnova Corporation. 版權所有.