



SZABO SCANDIC

Part of Europa Biosite

Produktinformation



Forschungsprodukte & Biochemikalien



Zellkultur & Verbrauchsmaterial



Diagnostik & molekulare Diagnostik



Laborgeräte & Service

Weitere Information auf den folgenden Seiten!
See the following pages for more information!



Lieferung & Zahlungsart

siehe unsere [Liefer- und Versandbedingungen](#)

Zuschläge

- Mindermengenzuschlag
- Trockeneiszuschlag
- Gefahrgutzuschlag
- Expressversand

SZABO-SCANDIC HandelsgmbH

Quellenstraße 110, A-1100 Wien

T. +43(0)1 489 3961-0

F. +43(0)1 489 3961-7

mail@szabo-scandic.com

www.szabo-scandic.com

[linkedin.com/company/szaboscandic](https://www.linkedin.com/company/szaboscandic) 

ARHGEF6 (Human) Matched Antibody Pair

Catalog # : H00009459-AP51

規格 : [1 Set]

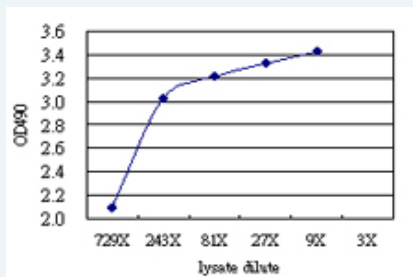
[List All](#)

Specification

Product Description: This antibody pair set comes with matched antibody pair to detect and quantify protein level of human ARHGEF6.

Reactivity: Human

Quality Control Testing: Standard curve using ARHGEF6 293T overexpression lysate (non-denatured) as an analyte.



Sandwich ELISA detection sensitivity ranging from approximately 729x to 3x dilution of the ARHGEF6 293T overexpression lysate (non-denatured).

Supplied Product: Antibody pair set content:
 1. Capture antibody: mouse monoclonal anti-ARHGEF6 (100 ug)
 2. Detection antibody: rabbit purified polyclonal anti-ARHGEF6 (50 ug)
 *Reagents are sufficient for at least 3-5 x 96 well plates using recommended protocols.

Storage Instruction: Store reagents of the antibody pair set at -20°C or lower. Please aliquot to avoid repeated freeze thaw cycle. Reagents should be returned to -20°C storage immediately after use.

MSDS:  [Download](#)

Applications

ELISA Pair (Transfected lysate)

 [Protocol Download](#)

Gene Information

Entrez GeneID: [9459](#)

Gene Name: ARHGEF6

Gene Alias: COOL2, Cool-2, KIAA0006, MRX46, PIXA, alpha-PIX, alphaPIX

Gene Description: Rac/Cdc42 guanine nucleotide exchange factor (GEF) 6

Omim ID: [300267](#), [300436](#)

Gene Ontology: [Hyperlink](#)

Gene Summary: Rho GTPases play a fundamental role in numerous cellular processes that are initiated by extracellular stimuli that work through G protein coupled receptors. The encoded protein belongs to a family of cytoplasmic proteins that activate the Ras-like family of Rho proteins by exchanging bound GDP for GTP. It may form a complex with G proteins and stimulate Rho-dependent signals. This protein is activated by PI3-kinase. Mutations in this gene can cause X-chromosomal non-specific mental retardation. [provided by RefSeq]

Other Designations: OTTHUMP00000062283,PAK-interacting exchange factor, alpha,Rac/Cdc42 guanine exchange factor (GEF) 6,Rac/Cdc42 guanine nucleotide exchange factor 6,mental retardation, X-linked 46,rho guanine nucleotide exchange factor 6

Gene Pathway

[Pancreatic cancer](#) [Regulation of actin cytoskeleton](#)

Related Disease

[Angina Pectoris](#), [Variant Coronary Vasospasm](#) [Genetic Predisposition to Disease](#)

[服務條款](#) | [隱私權政策](#) | [著作及商標](#) | [網站地圖](#)

©2016 亞諾法生技股份有限公司 Abnova Corporation. 版權所有.