



# SZABO SCANDIC

Part of Europa Biosite

## Produktinformation



Forschungsprodukte & Biochemikalien



Zellkultur & Verbrauchsmaterial



Diagnostik & molekulare Diagnostik



Laborgeräte & Service

Weitere Information auf den folgenden Seiten!  
See the following pages for more information!



### Lieferung & Zahlungsart

siehe unsere [Liefer- und Versandbedingungen](#)

### Zuschläge

- Mindermengenzuschlag
- Trockeneiszuschlag
- Gefahrgutzuschlag
- Expressversand

### SZABO-SCANDIC HandelsgmbH

Quellenstraße 110, A-1100 Wien

T. +43(0)1 489 3961-0

F. +43(0)1 489 3961-7

[mail@szabo-scandic.com](mailto:mail@szabo-scandic.com)

[www.szabo-scandic.com](http://www.szabo-scandic.com)

[linkedin.com/company/szaboscandic](https://www.linkedin.com/company/szaboscandic) 

## ARHGEF6 (Human) IP-WB Antibody Pair

Catalog # : H00009459-PW1

規格 : [ 1 Set ]

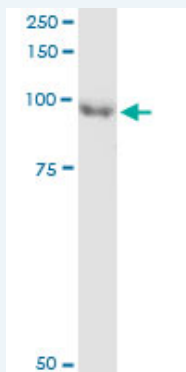
[List All](#)

### Specification

**Product Description:** This IP-WB antibody pair set comes with one antibody for immunoprecipitation and another to detect the precipitated protein in western blot.

**Reactivity:** Human

**Quality Control Testing:** Immunoprecipitation-Western Blot (IP-WB)



Immunoprecipitation of ARHGEF6 transfected lysate using mouse monoclonal anti-ARHGEF6 and Protein A Magnetic Bead ([U000Z](#)), and immunoblotted with mouse monoclonal anti-ARHGEF6.

**Supplied Product:** Antibody pair set content:  
 1. Antibody pair for IP: mouse monoclonal anti-ARHGEF6 (300 ug)  
 2. Antibody pair for WB: mouse monoclonal anti-ARHGEF6 (50 ug)

**Storage Instruction:** Store reagents of the antibody pair set at -20°C or lower. Please aliquot to avoid repeated freeze thaw cycle. Reagents should be returned to -20°C storage immediately after use.

**MSDS:**  [Download](#)

### Applications

**Immunoprecipitation-Western Blot**

 [Protocol Download](#)

### Gene Information

**Entrez GeneID:** [9459](#)

**Gene Name:** ARHGEF6

**Gene Alias:** COOL2, Cool-2, KIAA0006, MRX46, PIXA, alpha-PIX, alphaPIX

**Gene Description:** Rac/Cdc42 guanine nucleotide exchange factor (GEF) 6

**Omim ID:** [30026Z](#), [300436](#)

**Gene Ontology:** [Hyperlink](#)

### Application Image

Immunoprecipitation-Western Blot

---

**Gene Summary:** Rho GTPases play a fundamental role in numerous cellular processes that are initiated by extracellular stimuli that work through G protein coupled receptors. The encoded protein belongs to a family of cytoplasmic proteins that activate the Ras-like family of Rho proteins by exchanging bound GDP for GTP. It may form a complex with G proteins and stimulate Rho-dependent signals. This protein is activated by PI3-kinase. Mutations in this gene can cause X-chromosomal non-specific mental retardation. [provided by RefSeq]

---

**Other Designations:** OTTHUMP00000062283,PAK-interacting exchange factor, alpha,Rac/Cdc42 guanine exchange factor (GEF) 6,Rac/Cdc42 guanine nucleotide exchange factor 6,mental retardation, X-linked 46,rho guanine nucleotide exchange factor 6

---

#### **Gene Pathway**

---

[Pancreatic cancer Regulation of actin cytoskeleton](#)

#### **Related Disease**

---

[Angina Pectoris. Variant Coronary Vasospasm Genetic Predisposition to Disease](#)

---

[服務條款](#) | [隱私權政策](#) | [著作及商標](#) | [網站地圖](#)

©2016 亞諾法生技股份有限公司 Abnova Corporation. 版權所有.