



SZABO SCANDIC

Part of Europa Biosite

Produktinformation



Forschungsprodukte & Biochemikalien



Zellkultur & Verbrauchsmaterial



Diagnostik & molekulare Diagnostik



Laborgeräte & Service

Weitere Information auf den folgenden Seiten!
See the following pages for more information!



Lieferung & Zahlungsart

siehe unsere [Liefer- und Versandbedingungen](#)

Zuschläge

- Mindermengenzuschlag
- Trockeneiszuschlag
- Gefahrgutzuschlag
- Expressversand

SZABO-SCANDIC HandelsgmbH

Quellenstraße 110, A-1100 Wien

T. +43(0)1 489 3961-0

F. +43(0)1 489 3961-7

mail@szabo-scandic.com

www.szabo-scandic.com

[linkedin.com/company/szaboscandic](https://www.linkedin.com/company/szaboscandic) 

PTGES (Human) IP-WB Antibody Pair

Catalog # : H00009536-PW2

規格 : [1 Set]

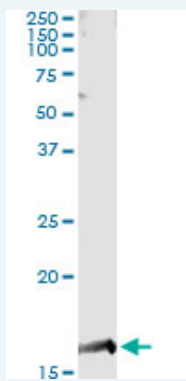
List All

Specification

Product Description: This IP-WB antibody pair set comes with one antibody for immunoprecipitation and another to detect the precipitated protein in western blot.

Reactivity: Human

Quality Control Testing: Immunoprecipitation-Western Blot (IP-WB)



Immunoprecipitation of PTGES transfected lysate using mouse monoclonal anti-PTGES and Protein A Magnetic Bead ([U0007](#)), and immunoblotted with rabbit polyclonal anti-PTGES.

Supplied Product: Antibody pair set content:
1. Antibody pair for IP: mouse monoclonal anti-PTGES (300 ug)
2. Antibody pair for WB: rabbit polyclonal anti-PTGES (50 ul)

Storage Instruction: Store reagents of the antibody pair set at -20°C or lower. Please aliquot to avoid repeated freeze thaw cycle. Reagents should be returned to -20°C storage immediately after use.

MSDS:  [Download](#)

Applications

Immunoprecipitation-Western Blot

 [Protocol Download](#)

Gene Information

Entrez GeneID: [9536](#)

Gene Name: PTGES

Gene Alias: MGC10317, MGST-IV, MGST1-L1, MGST1L1, MPGES, PGES, PIG12, PP102, PP1294, TP53I12, mPGES-1

Gene Description: prostaglandin E synthase

Omim ID: [605172](#)

Application Image

Immunoprecipitation-Western Blot

Gene Ontology: [Hyperlink](#)

Gene Summary: The protein encoded by this gene is a glutathione-dependent prostaglandin E synthase. The expression of this gene has been shown to be induced by proinflammatory cytokine interleukin 1 beta (IL1B). Its expression can also be induced by tumor suppressor protein TP53, and may be involved in TP53 induced apoptosis. Knockout studies in mice suggest that this gene may contribute to the pathogenesis of collagen-induced arthritis and mediate acute pain during inflammatory responses. [provided by RefSeq]

Other Designations: MGST1-like 1, OTTHUMP00000022345, glutathione S-transferase 1-like 1, microsomal glutathione S-transferase 1-like 1, microsomal prostaglandin E synthase-1, p53-induced apoptosis protein 12, p53-induced gene 12, tumor protein p53 inducible protein 12

Gene Pathway

[Arachidonic acid metabolism](#) [Metabolic pathways](#)

Related Disease

[Adenocarcinoma](#) [Adenoma](#) [Alzheimer Disease](#) [Alzheimer disease](#) [Atherosclerosis](#)
[Brain Ischemia](#) [Breast cancer](#) [Breast Neoplasms](#) [Cardiovascular Diseases](#)
[Colorectal Neoplasms](#) [Connective Tissue Diseases](#) [Diabetes Complications](#)
[Diabetes Mellitus, Type 2](#) [Ductus Arteriosus, Patent](#) [Edema](#) [Esophageal Neoplasms](#)
[Fetal Diseases](#) [Genetic Predisposition to Disease](#) [Hypertension](#)

... see more

[服務條款](#) | [隱私權政策](#) | [著作及商標](#) | [網站地圖](#)

©2016 亞諾法生技股份有限公司 Abnova Corporation. 版權所有.