



SZABO SCANDIC

Part of Europa Biosite

Produktinformation



Forschungsprodukte & Biochemikalien



Zellkultur & Verbrauchsmaterial



Diagnostik & molekulare Diagnostik



Laborgeräte & Service

Weitere Information auf den folgenden Seiten!
See the following pages for more information!



Lieferung & Zahlungsart

siehe unsere [Liefer- und Versandbedingungen](#)

Zuschläge

- Mindermengenzuschlag
- Trockeneiszuschlag
- Gefahrgutzuschlag
- Expressversand

SZABO-SCANDIC HandelsgmbH

Quellenstraße 110, A-1100 Wien

T. +43(0)1 489 3961-0

F. +43(0)1 489 3961-7

mail@szabo-scandic.com

www.szabo-scandic.com

[linkedin.com/company/szaboscandic](https://www.linkedin.com/company/szaboscandic) 

H6PD (Human) IP-WB Antibody Pair

Catalog # : H00009563-PW1

規格 : [1 Set]

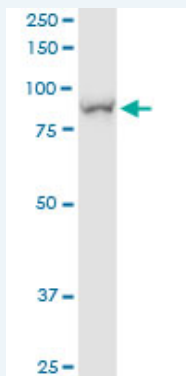
List All

Specification

Product Description: This IP-WB antibody pair set comes with one antibody for immunoprecipitation and another to detect the precipitated protein in western blot.

Reactivity: Human

Quality Control Testing: Immunoprecipitation-Western Blot (IP-WB)



Immunoprecipitation of H6PD transfected lysate using rabbit polyclonal anti-H6PD and Protein A Magnetic Bead ([U0007](#)), and immunoblotted with mouse purified polyclonal anti-H6PD.

Supplied Product: Antibody pair set content:
1. Antibody pair for IP: rabbit polyclonal anti-H6PD (300 ul)
2. Antibody pair for WB: mouse purified polyclonal anti-H6PD (50 ug)

Storage Instruction: Store reagents of the antibody pair set at -20°C or lower. Please aliquot to avoid repeated freeze thaw cycle. Reagents should be returned to -20°C storage immediately after use.

MSDS:  [Download](#)

Applications

Immunoprecipitation-Western Blot

 [Protocol Download](#)

Gene Information

Entrez GeneID: [9563](#)

Gene Name: H6PD

Gene Alias: DKFZp686A01246,G6PDH,GDH,MGC87643

Gene Description: hexose-6-phosphate dehydrogenase (glucose 1-dehydrogenase)

Omim ID: [138090](#), [604931](#)

Gene Ontology: [Hyperlink](#)

Application Image

Immunoprecipitation-Western Blot

Gene Summary: There are 2 forms of glucose-6-phosphate dehydrogenase. G form is X-linked and H form, encoded by this gene, is autosomally linked. This H form shows activity with other hexose-6-phosphates, especially galactose-6-phosphate, whereas the G form is specific for glucose-6-phosphate. Both forms are present in most tissues, but H form is not found in red cells. [provided by RefSeq]

Other Designations: 6-phosphogluconolactonase,G6PD, H form,GDH/6PGL endoplasmic bifunctional protein,OTTHUMP0000001703,glucose 1-dehydrogenase,glucose dehydrogenase,glucose dehydrogenase,glucose-6-phosphate dehydrogenase, salivary,hexose-6-phosphate dehydrogenase

Gene Pathway

[Biosynthesis of alkaloids derived from histidine and purine](#) [Biosynthesis of plant hormones](#)
[Metabolic pathways](#) [Pentose phosphate pathway](#)

Related Disease

[Dementia](#) [Genetic Predisposition to Disease](#) [Multiple Sclerosis](#) [Polycystic Ovary Syndrome](#)

[服務條款](#) | [隱私權政策](#) | [著作及商標](#) | [網站地圖](#)

©2016 亞諾法生技股份有限公司 Abnova Corporation. 版權所有.