



SZABO SCANDIC

Part of Europa Biosite

Produktinformation



Forschungsprodukte & Biochemikalien



Zellkultur & Verbrauchsmaterial



Diagnostik & molekulare Diagnostik



Laborgeräte & Service

Weitere Information auf den folgenden Seiten!
See the following pages for more information!



Lieferung & Zahlungsart

siehe unsere [Liefer- und Versandbedingungen](#)

Zuschläge

- Mindermengenzuschlag
- Trockeneiszuschlag
- Gefahrgutzuschlag
- Expressversand

SZABO-SCANDIC HandelsgmbH

Quellenstraße 110, A-1100 Wien

T. +43(0)1 489 3961-0

F. +43(0)1 489 3961-7

mail@szabo-scandic.com

www.szabo-scandic.com

[linkedin.com/company/szaboscandic](https://www.linkedin.com/company/szaboscandic) 

CREB5 (Human) IP-WB Antibody Pair

Catalog # : H00009586-PW1

規格 : [1 Set]

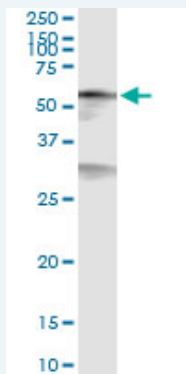
List All

Specification

Product Description: This IP-WB antibody pair set comes with one antibody for immunoprecipitation and another to detect the precipitated protein in western blot.

Reactivity: Human

Quality Control Testing: Immunoprecipitation-Western Blot (IP-WB)



Immunoprecipitation of CREB5 transfected lysate using rabbit polyclonal anti-CREB5 and Protein A Magnetic Bead (U0007), and immunoblotted with mouse purified polyclonal anti-CREB5.

Supplied Product: Antibody pair set content:
1. Antibody pair for IP: rabbit polyclonal anti-CREB5 (300 ul)
2. Antibody pair for WB: mouse purified polyclonal anti-CREB5 (50 ug)

Storage Instruction: Store reagents of the antibody pair set at -20°C or lower. Please aliquot to avoid repeated freeze thaw cycle. Reagents should be returned to -20°C storage immediately after use.

MSDS:  [Download](#)

Applications

Immunoprecipitation-Western Blot

 [Protocol Download](#)

Gene Information

Entrez GeneID: [9586](#)

Gene Name: CREB5

Gene Alias: CRE-BPA

Gene Description: cAMP responsive element binding protein 5

Gene Ontology: [Hyperlink](#)

Gene Summary: The product of this gene belongs to the CRE (cAMP response

element)-binding protein family. Members of this family contain zinc-finger and bZIP DNA-binding domains. The encoded protein specifically binds to CRE as a homodimer or a heterodimer with c-Jun or CRE-BP1, and functions as a CRE-dependent trans-activator. Alternatively spliced transcript variants encoding different isoforms have been identified. [provided by RefSeq]

Other H_GS165L15.1,OTTHUMP00000122602,cAMP response element
Designations: binding protein CRE-Bpa,cAMP response element-binding protein CRE-BPa,cAMP responsive element binding protein 5 isoform alpha

Gene Pathway

[Huntington's disease](#) [Prostate cancer](#)

Related Disease

[Asthma](#) [Asthma](#) [Celiac Disease](#) [Genetic Predisposition to Disease](#) [Neoplasm Invasiveness](#)
[Prostatic Neoplasms](#) [Tobacco Use Disorder](#)

[服務條款](#) | [隱私權政策](#) | [著作及商標](#) | [網站地圖](#)

©2016 亞諾法生技股份有限公司 Abnova Corporation. 版權所有.