



SZABO SCANDIC

Part of Europa Biosite

Produktinformation



Forschungsprodukte & Biochemikalien



Zellkultur & Verbrauchsmaterial



Diagnostik & molekulare Diagnostik



Laborgeräte & Service

Weitere Information auf den folgenden Seiten!
See the following pages for more information!



Lieferung & Zahlungsart

siehe unsere [Liefer- und Versandbedingungen](#)

Zuschläge

- Mindermengenzuschlag
- Trockeneiszuschlag
- Gefahrgutzuschlag
- Expressversand

SZABO-SCANDIC HandelsgmbH

Quellenstraße 110, A-1100 Wien

T. +43(0)1 489 3961-0

F. +43(0)1 489 3961-7

mail@szabo-scandic.com

www.szabo-scandic.com

[linkedin.com/company/szaboscandic](https://www.linkedin.com/company/szaboscandic) 

ISG15 (Human) IP-WB Antibody Pair

Catalog # : H00009636-PW2

規格 : [1 Set]

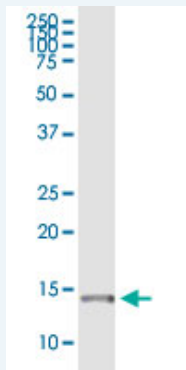
List All

Specification

Product Description: This IP-WB antibody pair set comes with one antibody for immunoprecipitation and another to detect the precipitated protein in western blot.

Reactivity: Human

Quality Control Testing: Immunoprecipitation-Western Blot (IP-WB)



Immunoprecipitation of ISG15 transfected lysate using rabbit polyclonal anti-ISG15 and Protein A Magnetic Bead (U0007), and immunoblotted with mouse purified polyclonal anti-ISG15.

Supplied Product: Antibody pair set content:
1. Antibody pair for IP: rabbit polyclonal anti-ISG15 (300 ul)
2. Antibody pair for WB: mouse purified polyclonal anti-ISG15 (50 ug)

Storage Instruction: Store reagents of the antibody pair set at -20°C or lower. Please aliquot to avoid repeated freeze thaw cycle. Reagents should be returned to -20°C storage immediately after use.

Applications

Immunoprecipitation-Western Blot

 [Protocol Download](#)

Gene Information

Entrez GeneID: [9636](#)

Gene Name: ISG15

Gene Alias: G1P2,IFI15,UCRP

Gene Description: ISG15 ubiquitin-like modifier

Omim ID: [147571](#)

Gene Ontology: [Hyperlink](#)

Gene Summary: ISG15 is a ubiquitin-like protein that becomes conjugated to many

cellular proteins upon activation by interferon-alpha (IFNA; MIM 147660) and -beta (IFNB; MIM 147640) (Zhao et al., 2005 [PubMed 16009940]).
[supplied by OMIM]

Other Designations: OTTHUMP00000038464,interferon, alpha-inducible protein (clone IFI-15K),interferon-induced 17-kDa/15-kDa protein,interferon-stimulated protein, 15 kDa,ubiquitin cross-reactive protein

Related Disease

[Cardiovascular Diseases](#) [Diabetes Mellitus, Type 2](#) [Edema](#)
[Genetic Predisposition to Disease](#) [Osteoporosis](#) [Ovarian Neoplasms](#)
[Respiratory Syncytial Virus Infections](#)

[服務條款](#) | [隱私權政策](#) | [著作及商標](#) | [網站地圖](#)

©2016 亞諾法生技股份有限公司 Abnova Corporation. 版權所有.