



SZABO SCANDIC

Part of Europa Biosite

Produktinformation



Forschungsprodukte & Biochemikalien



Zellkultur & Verbrauchsmaterial



Diagnostik & molekulare Diagnostik



Laborgeräte & Service

Weitere Information auf den folgenden Seiten!
See the following pages for more information!



Lieferung & Zahlungsart

siehe unsere [Liefer- und Versandbedingungen](#)

Zuschläge

- Mindermengenzuschlag
- Trockeneiszuschlag
- Gefahrgutzuschlag
- Expressversand

SZABO-SCANDIC HandelsgmbH

Quellenstraße 110, A-1100 Wien

T. +43(0)1 489 3961-0

F. +43(0)1 489 3961-7

mail@szabo-scandic.com

www.szabo-scandic.com

[linkedin.com/company/szaboscandic](https://www.linkedin.com/company/szaboscandic) 

IKBKE (Human) Matched Antibody Pair

Catalog # : H00009641-AP41

規格 : [1 Set]

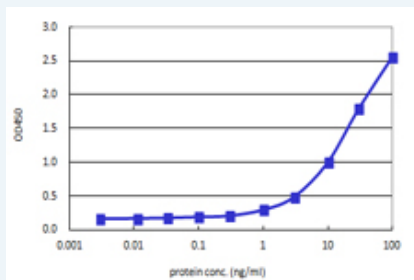
[List All](#)

Specification

Product Description: This antibody pair set comes with matched antibody pair to detect and quantify protein level of human IKBKE.

Reactivity: Human

Quality Control Testing: Standard curve using recombinant protein (H00009641-Q01) as an analyte.



Sandwich ELISA detection sensitivity ranging from 1 ng/ml to 100 ng/ml.

Supplied Product: Antibody pair set content:
 1. Capture antibody: mouse monoclonal anti-IKBKE, IgG1 Kappa (100 ug)
 2. Detection antibody: biotinylated mouse monoclonal anti-IKBKE, IgG2b Kappa (50 ug)
 *Reagents are sufficient for at least 3-5 x 96 well plates using recommended protocols.

Storage Instruction: Store reagents of the antibody pair set at -20°C or lower. Please aliquot to avoid repeated freeze thaw cycle. Reagents should be returned to -20°C storage immediately after use.

Applications

ELISA Pair (Recombinant protein)

 [Protocol Download](#)

Gene Information

Entrez GeneID: [9641](#)

Gene Name: IKBKE

Gene Alias: IKK-i, IKKE, IKKI, KIAA0151, MGC125294, MGC125295, MGC125297

Gene Description: inhibitor of kappa light polypeptide gene enhancer in B-cells, kinase epsilon

Omim ID: [605048](#)

Gene Ontology: [Hyperlink](#)

Other Designations: IKK-related kinase epsilon, OTTHUMP00000034540, inducible IkappaB kinase

Gene Pathway

[Toll-like receptor signaling pathway](#)

Related Disease

[Arthritis, Rheumatoid](#) [Cardiovascular Diseases](#) [Cleft Lip](#) [Cleft Palate](#)
[Depressive Disorder, Major](#) [Diabetes Mellitus, Type 2](#) [Disease Susceptibility](#) [Edema](#)
[Genetic Predisposition to Disease](#) [Kidney Failure, Chronic](#) [Panic Disorder](#)

[服務條款](#) | [隱私權政策](#) | [著作及商標](#) | [網站地圖](#)

©2016 亞諾法生技股份有限公司 Abnova Corporation. 版權所有.