



SZABO SCANDIC

Part of Europa Biosite

Produktinformation



Forschungsprodukte & Biochemikalien



Zellkultur & Verbrauchsmaterial



Diagnostik & molekulare Diagnostik



Laborgeräte & Service

Weitere Information auf den folgenden Seiten!
See the following pages for more information!



Lieferung & Zahlungsart

siehe unsere [Liefer- und Versandbedingungen](#)

Zuschläge

- Mindermengenzuschlag
- Trockeneiszuschlag
- Gefahrgutzuschlag
- Expressversand

SZABO-SCANDIC HandelsgmbH

Quellenstraße 110, A-1100 Wien

T. +43(0)1 489 3961-0

F. +43(0)1 489 3961-7

mail@szabo-scandic.com

www.szabo-scandic.com

[linkedin.com/company/szaboscandic](https://www.linkedin.com/company/szaboscandic) 

TLR6 (Human) Matched Antibody Pair

Catalog # : H00010333-AP41

規格 : [1 Set]

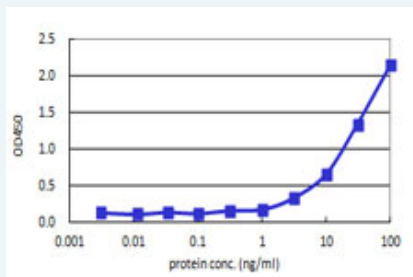
[List All](#)

Specification

Product Description: This antibody pair set comes with matched antibody pair to detect and quantify protein level of human TLR6.

Reactivity: Human

Quality Control Testing: Standard curve using recombinant protein (H00010333-Q01) as an analyte.



Sandwich ELISA detection sensitivity ranging from 1 ng/ml to 100 ng/ml.

Supplied Product: Antibody pair set content:
 1. Capture antibody: mouse monoclonal anti-TLR6, IgG2a Kappa (100 ug)
 2. Detection antibody: biotinylated mouse monoclonal anti-TLR6, IgG2a Kappa (50 ug)
 *Reagents are sufficient for at least 3-5 x 96 well plates using recommended protocols.

Storage Instruction: Store reagents of the antibody pair set at -20°C or lower. Please aliquot to avoid repeated freeze thaw cycle. Reagents should be returned to -20°C storage immediately after use.

Applications

ELISA Pair (Recombinant protein)

 [Protocol Download](#)

Gene Information

Entrez GeneID: [10333](#)

Gene Name: TLR6

Gene Alias: CD286

Gene Description: toll-like receptor 6

Omim ID: [605403](#)

Gene Ontology: [Hyperlink](#)

Gene Summary: The protein encoded by this gene is a member of the Toll-like receptor (TLR) family which plays a fundamental role in pathogen recognition

and activation of innate immunity. TLRs are highly conserved from Drosophila to humans and share structural and functional similarities. They recognize pathogen-associated molecular patterns (PAMPs) that are expressed on infectious agents, and mediate the production of cytokines necessary for the development of effective immunity. The various TLRs exhibit different patterns of expression. This receptor functionally interacts with toll-like receptor 2 to mediate cellular response to bacterial lipoproteins. [provided by RefSeq

Other OTTHUMP00000158730

Designations:

Gene Pathway

[Toll-like receptor signaling pathway](#)

Related Disease

[Adenocarcinoma](#) [Arthritis, Rheumatoid](#) [Aspergillosis](#) [Asthma](#) [Asthma](#) [Birth Weight](#) [Breast Neoplasms](#) [Bronchial Hyperreactivity](#) [Bronchiolitis Obliterans](#) [Bronchiolitis, Viral](#) [Chorioamnionitis](#) [Chronic Disease](#) [Colitis, Ulcerative](#) [Crohn Disease](#) [Crohn's disease](#) [Cystitis](#) [Dermatitis, Atopic](#) [Esophageal Neoplasms](#) [Fetal Membranes, Premature Rupture](#)

... see more

[服務條款](#) | [隱私權政策](#) | [著作及商標](#) | [網站地圖](#)

©2016 亞諾法生技股份有限公司 Abnova Corporation. 版權所有.