



SZABO SCANDIC

Part of Europa Biosite

Produktinformation



Forschungsprodukte & Biochemikalien



Zellkultur & Verbrauchsmaterial



Diagnostik & molekulare Diagnostik



Laborgeräte & Service

Weitere Information auf den folgenden Seiten!
See the following pages for more information!



Lieferung & Zahlungsart

siehe unsere [Liefer- und Versandbedingungen](#)

Zuschläge

- Mindermengenzuschlag
- Trockeneiszuschlag
- Gefahrgutzuschlag
- Expressversand

SZABO-SCANDIC HandelsgmbH

Quellenstraße 110, A-1100 Wien

T. +43(0)1 489 3961-0

F. +43(0)1 489 3961-7

mail@szabo-scandic.com

www.szabo-scandic.com

[linkedin.com/company/szaboscandic](https://www.linkedin.com/company/szaboscandic) 

MAD2L2 (Human) IP-WB Antibody Pair

Catalog # : H00010459-PW2

規格 : [1 Set]

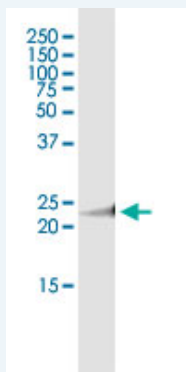
List All

Specification

Product Description: This IP-WB antibody pair set comes with one antibody for immunoprecipitation and another to detect the precipitated protein in western blot.

Reactivity: Human

Quality Control Testing: Immunoprecipitation-Western Blot (IP-WB)



Immunoprecipitation of MAD2L2 transfected lysate using rabbit polyclonal anti-MAD2L2 and Protein A Magnetic Bead (U0007), and immunoblotted with mouse purified polyclonal anti-MAD2L2.

Supplied Product: Antibody pair set content:
1. Antibody pair for IP: rabbit polyclonal anti-MAD2L2 (300 ul)
2. Antibody pair for WB: mouse purified polyclonal anti-MAD2L2 (50 ug)

Storage Instruction: Store reagents of the antibody pair set at -20°C or lower. Please aliquot to avoid repeated freeze thaw cycle. Reagents should be returned to -20°C storage immediately after use.

Applications

Immunoprecipitation-Western Blot

 [Protocol Download](#)

Gene Information

Entrez GeneID: [10459](#)

Gene Name: MAD2L2

Gene Alias: MAD2B,REV7

Gene Description: MAD2 mitotic arrest deficient-like 2 (yeast)

Omim ID: [604094](#)

Gene Ontology: [Hyperlink](#)

Gene Summary: The protein encoded by this gene is a component of the mitotic spindle

assembly checkpoint that prevents the onset of anaphase until all chromosomes are properly aligned at the metaphase plate. The encoded protein, which is similar to MAD2L1, is capable of interacting with ADAM9, ADAM15, REV1, and REV3 proteins. [provided by RefSeq

Other Designations: MAD2 (mitotic arrest deficient, yeast, homolog)-like 2,MAD2 homolog,OTTHUMP00000002273,OTTHUMP00000002275,mitotic arrest deficient homolog-like 2

Gene Pathway

[Cell cycle](#)

Related Disease

[Breast cancer](#) [Breast Neoplasms](#) [Genetic Predisposition to Disease](#)

[服務條款](#) | [隱私權政策](#) | [著作及商標](#) | [網站地圖](#)

©2016 亞諾法生技股份有限公司 Abnova Corporation. 版權所有.