



SZABO SCANDIC

Part of Europa Biosite

Produktinformation



Forschungsprodukte & Biochemikalien



Zellkultur & Verbrauchsmaterial



Diagnostik & molekulare Diagnostik



Laborgeräte & Service

Weitere Information auf den folgenden Seiten!
See the following pages for more information!



Lieferung & Zahlungsart

siehe unsere [Liefer- und Versandbedingungen](#)

Zuschläge

- Mindermengenzuschlag
- Trockeneiszuschlag
- Gefahrgutzuschlag
- Expressversand

SZABO-SCANDIC HandelsgmbH

Quellenstraße 110, A-1100 Wien

T. +43(0)1 489 3961-0

F. +43(0)1 489 3961-7

mail@szabo-scandic.com

www.szabo-scandic.com

[linkedin.com/company/szaboscandic](https://www.linkedin.com/company/szaboscandic) 

IGF2BP2 (Human) Matched Antibody Pair

Catalog # : H00010644-AP21

規格 : [1 Set]

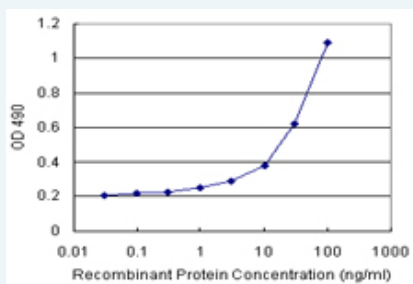
[List All](#)

Specification

Product Description: This antibody pair set comes with matched antibody pair to detect and quantify protein level of human IGF2BP2.

Reactivity: Human

Quality Control Testing: Standard curve using recombinant protein (H00010644-P02) as an analyte.



Sandwich ELISA detection sensitivity ranging from 1 ng/ml to 100 ng/ml.


Supplied Product: Antibody pair set content:
 1. Capture antibody: rabbit MaxPab® affinity purified polyclonal anti-IGF2BP2 (100 ug)
 2. Detection antibody: mouse purified polyclonal anti-IGF2BP2 (20 ug)
 *Reagents are sufficient for at least 1-2 x 96 well plates using recommended protocols.

Storage Instruction: Store reagents of the antibody pair set at -20°C or lower. Please aliquot to avoid repeated freeze thaw cycle. Reagents should be returned to -20°C storage immediately after use.

MSDS:  [Download](#)

Applications

ELISA Pair (Recombinant protein)

 [Protocol Download](#)

Gene Information

Entrez GeneID: [10644](#)

Gene Name: IGF2BP2

Gene Alias: IMP-2,IMP2,VICKZ2,p62

Gene Description: insulin-like growth factor 2 mRNA binding protein 2

Omim ID: [125853](#), [608289](#)

Gene Ontology: [Hyperlink](#)

Gene Summary: This gene encodes a member of the IGF-II mRNA-binding protein (IMP) family. The protein encoded by this gene contains several four KH domains and two RRM domains. It functions by binding to the 5' UTR of the insulin-like growth factor 2 (IGF2) mRNA and regulating IGF2 translation. Alternate transcriptional splice variants, encoding different isoforms, have been characterized. [provided by RefSeq]

Other Designations: IGF II mRNA binding protein 2,IGF-II mRNA-binding protein 2,insulin-like 2 growth factor 2-binding protein 2

Related Disease

[Atherosclerosis](#) [Birth Weight](#) [Calcinosis](#) [Carcinoma](#) [Cardiovascular Diseases](#)
[Coronary Artery Disease](#) [Diabetes Complications](#) [Diabetes Mellitus](#)
[Diabetes Mellitus, Type 1](#) [Diabetes Mellitus, Type 2](#) [Diabetes, Gestational](#) [Diabetes, type 1](#)
[Edema](#) [Fetal Diseases](#) [Genetic Predisposition to Disease](#) [Glucose Intolerance](#)
[Glucose Metabolism Disorders](#) [HIV Infections](#) [Hyperglycemia](#)

... see more

[服務條款](#) | [隱私權政策](#) | [著作及商標](#) | [網站地圖](#)

©2016 亞諾法生技股份有限公司 Abnova Corporation. 版權所有.