



SZABO SCANDIC

Part of Europa Biosite

Produktinformation



Forschungsprodukte & Biochemikalien



Zellkultur & Verbrauchsmaterial



Diagnostik & molekulare Diagnostik



Laborgeräte & Service

Weitere Information auf den folgenden Seiten!
See the following pages for more information!



Lieferung & Zahlungsart

siehe unsere [Liefer- und Versandbedingungen](#)

Zuschläge

- Mindermengenzuschlag
- Trockeneiszuschlag
- Gefahrgutzuschlag
- Expressversand

SZABO-SCANDIC HandelsgmbH

Quellenstraße 110, A-1100 Wien

T. +43(0)1 489 3961-0

F. +43(0)1 489 3961-7

mail@szabo-scandic.com

www.szabo-scandic.com

[linkedin.com/company/szaboscandic](https://www.linkedin.com/company/szaboscandic) 

CAMKK2 (Human) Matched Antibody Pair

Catalog # : H00010645-AP11

規格 : [1 Set]

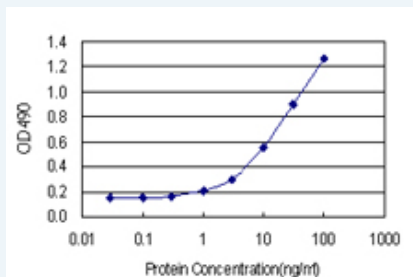
[List All](#)

Specification

Product Description: This antibody pair set comes with matched antibody pair to detect and quantify protein level of human CAMKK2.

Reactivity: Human

Quality Control Testing: Standard curve using recombinant protein (H00010645-P01) as an analyte.



Sandwich ELISA detection sensitivity ranging from 0.3 ng/ml to 100 ng/ml.

Supplied Product: Antibody pair set content:
 1. Capture antibody: rabbit MaxPab® affinity purified polyclonal anti-CAMKK2 (100 ug)
 2. Detection antibody: mouse monoclonal anti-CAMKK2, IgG1 Kappa (20 ug)
 *Reagents are sufficient for at least 1-2 x 96 well plates using recommended protocols.

Storage Instruction: Store reagents of the antibody pair set at -20°C or lower. Please aliquot to avoid repeated freeze thaw cycle. Reagents should be returned to -20°C storage immediately after use.

MSDS:  [Download](#)

Applications

ELISA Pair (Recombinant protein)

 [Protocol Download](#)

Gene Information

Entrez GeneID: [10645](#)

Gene Name: CAMKK2

Gene Alias: CAMKK,CAMKKB,KIAA0787,MGC15254

Gene Description: calcium/calmodulin-dependent protein kinase kinase 2, beta

Gene Ontology: [Hyperlink](#)

Gene Summary: The product of this gene belongs to the Serine/Threonine protein

kinase family, and to the Ca(2+)/calmodulin-dependent protein kinase subfamily. This protein plays a role in the calcium/calmodulin-dependent (CaM) kinase cascade by phosphorylating the downstream kinases CaMK1 and CaMK4. Seven transcript variants encoding six distinct isoforms have been identified for this gene. Additional splice variants have been described but their full-length nature has not been determined. The identified isoforms exhibit a distinct ability to undergo autophosphorylation and to phosphorylate the downstream kinases. [provided by RefSeq]

Other Designations: CAMKK beta protein,calcium/calmodulin-dependent protein kinase beta,calcium/calmodulin-dependent protein kinase kinase 2 beta

Gene Pathway

[Adipocytokine signaling pathway](#)

Related Disease

[Agoraphobia](#) [Anxiety Disorders](#) [Bipolar Disorder](#) [Genetic Predisposition to Disease](#) [Kidney Failure](#), [Chronic Panic Disorder](#) [Phobic Disorders](#) [Tobacco Use Disorder](#)

[服務條款](#) | [隱私權政策](#) | [著作及商標](#) | [網站地圖](#)

©2016 亞諾法生技股份有限公司 Abnova Corporation. 版權所有.