



# SZABO SCANDIC

Part of Europa Biosite

## Produktinformation



Forschungsprodukte & Biochemikalien



Zellkultur & Verbrauchsmaterial



Diagnostik & molekulare Diagnostik



Laborgeräte & Service

Weitere Information auf den folgenden Seiten!  
See the following pages for more information!



### Lieferung & Zahlungsart

siehe unsere [Liefer- und Versandbedingungen](#)

### Zuschläge

- Mindermengenzuschlag
- Trockeneiszuschlag
- Gefahrgutzuschlag
- Expressversand

### SZABO-SCANDIC HandelsgmbH

Quellenstraße 110, A-1100 Wien

T. +43(0)1 489 3961-0

F. +43(0)1 489 3961-7

[mail@szabo-scandic.com](mailto:mail@szabo-scandic.com)

[www.szabo-scandic.com](http://www.szabo-scandic.com)

[linkedin.com/company/szaboscandic](https://www.linkedin.com/company/szaboscandic) 

## TOMM34 (Human) IP-WB Antibody Pair

Catalog # : H00010953-PW2

規格 : [ 1 Set ]

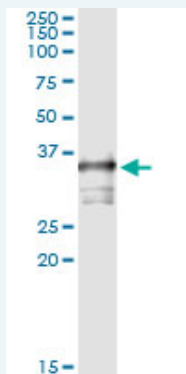
List All

### Specification

**Product Description:** This IP-WB antibody pair set comes with one antibody for immunoprecipitation and another to detect the precipitated protein in western blot.

**Reactivity:** Human

**Quality Control Testing:** Immunoprecipitation-Western Blot (IP-WB)



Immunoprecipitation of TOMM34 transfected lysate using mouse monoclonal anti-TOMM34 and Protein A Magnetic Bead ([U0007](#)), and immunoblotted with rabbit polyclonal anti-TOMM34.

**Supplied Product:** Antibody pair set content:  
1. Antibody pair for IP: mouse monoclonal anti-TOMM34 (300 ug)  
2. Antibody pair for WB: rabbit polyclonal anti-TOMM34 (50 ul)

**Storage Instruction:** Store reagents of the antibody pair set at -20°C or lower. Please aliquot to avoid repeated freeze thaw cycle. Reagents should be returned to -20°C storage immediately after use.

**MSDS:**  [Download](#)

### Applications

Immunoprecipitation-Western Blot

 [Protocol Download](#)

### Gene Information

**Entrez GeneID:** [10953](#)

**Gene Name:** TOMM34

**Gene Alias:** HTOM34P, TOM34, URCC3

**Gene Description:** translocase of outer mitochondrial membrane 34

**Gene Ontology:** [Hyperlink](#)

**Gene Summary:** The protein encoded by this gene is involved in the import of precursor

### Application Image

Immunoprecipitation-Western Blot

proteins into mitochondria. The encoded protein has a chaperone-like activity, binding the mature portion of unfolded proteins and aiding their import into mitochondria. This protein, which is found in the cytoplasm and sometimes associated with the outer mitochondrial membrane, has a weak ATPase activity and contains 6 TPR repeats. [provided by RefSeq

---

**Other** OTTHUMP00000031079,mitochondrial import receptor subunit  
**Designations:** TOM34,outer mitochondrial membrane translocase (34kD)

---

---

[服務條款](#) | [隱私權政策](#) | [著作及商標](#) | [網站地圖](#)

©2016 亞諾法生技股份有限公司 Abnova Corporation. 版權所有.