



SZABO SCANDIC

Part of Europa Biosite

Produktinformation



Forschungsprodukte & Biochemikalien



Zellkultur & Verbrauchsmaterial



Diagnostik & molekulare Diagnostik



Laborgeräte & Service

Weitere Information auf den folgenden Seiten!
See the following pages for more information!



Lieferung & Zahlungsart

siehe unsere [Liefer- und Versandbedingungen](#)

Zuschläge

- Mindermengenzuschlag
- Trockeneiszuschlag
- Gefahrgutzuschlag
- Expressversand

SZABO-SCANDIC HandelsgmbH

Quellenstraße 110, A-1100 Wien

T. +43(0)1 489 3961-0

F. +43(0)1 489 3961-7

mail@szabo-scandic.com

www.szabo-scandic.com

[linkedin.com/company/szaboscandic](https://www.linkedin.com/company/szaboscandic) 

TOLLIP (Human) IP-WB Antibody Pair

Catalog # : H00054472-PW2

規格 : [1 Set]

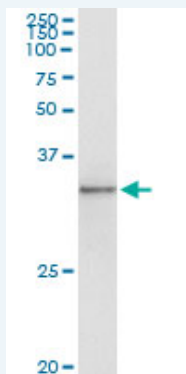
List All

Specification

Product Description: This IP-WB antibody pair set comes with one antibody for immunoprecipitation and another to detect the precipitated protein in western blot.

Reactivity: Human

Quality Control Testing: Immunoprecipitation-Western Blot (IP-WB)



Immunoprecipitation of TOLLIP transfected lysate using mouse monoclonal anti-TOLLIP and Protein A Magnetic Bead ([U0007](#)), and immunoblotted with mouse monoclonal anti-TOLLIP.

Supplied Product: Antibody pair set content:
1. Antibody pair for IP: mouse monoclonal anti-TOLLIP (300 ug)
2. Antibody pair for WB: mouse monoclonal anti-TOLLIP (50 ug)

Storage Instruction: Store reagents of the antibody pair set at -20°C or lower. Please aliquot to avoid repeated freeze thaw cycle. Reagents should be returned to -20°C storage immediately after use.

MSDS:  [Download](#)

Applications

Immunoprecipitation-Western Blot

 [Protocol Download](#)

Gene Information

Entrez GeneID: [54472](#)

Gene Name: TOLLIP

Gene Alias: FLJ33531,IL-1RAcPIP

Gene Description: toll interacting protein

Omim ID: [606277](#)

Gene Ontology: [Hyperlink](#)

Application Image

Immunoprecipitation-Western Blot

Other Toll-interacting protein,adapter protein

Designations:

Gene Pathway

[Toll-like receptor signaling pathway](#)

Related Disease

[Birth Weight](#) [Cerebral Hemorrhage](#) [Dermatitis, Atopic](#) [Genetic Predisposition to Disease](#)
[Glioblastoma](#) [Glioma](#) [Hypertension](#) [Intracranial Hemorrhages](#) [Leukemia](#)
[Leukemia, Myeloid, Acute](#) [Meningeal Neoplasms](#) [Meningioma](#) [Stroke](#)
[Subarachnoid Hemorrhage](#)

[服務條款](#) | [隱私權政策](#) | [著作及商標](#) | [網站地圖](#)

©2016 亞諾法生技股份有限公司 Abnova Corporation. 版權所有.