



SZABO SCANDIC

Part of Europa Biosite

Produktinformation



Forschungsprodukte & Biochemikalien



Zellkultur & Verbrauchsmaterial



Diagnostik & molekulare Diagnostik



Laborgeräte & Service

Weitere Information auf den folgenden Seiten!
See the following pages for more information!



Lieferung & Zahlungsart

siehe unsere [Liefer- und Versandbedingungen](#)

Zuschläge

- Mindermengenzuschlag
- Trockeneiszuschlag
- Gefahrgutzuschlag
- Expressversand

SZABO-SCANDIC HandelsgmbH

Quellenstraße 110, A-1100 Wien

T. +43(0)1 489 3961-0

F. +43(0)1 489 3961-7

mail@szabo-scandic.com

www.szabo-scandic.com

[linkedin.com/company/szaboscandic](https://www.linkedin.com/company/szaboscandic) 

EPDR1 (Human) Matched Antibody Pair

Catalog # : H00054749-AP51

規格 : [1 Set]

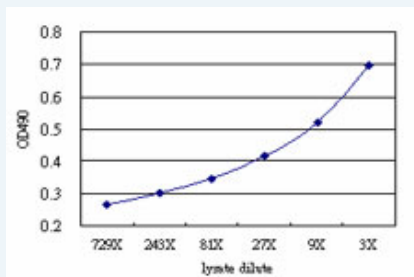
[List All](#)

Specification

Product Description: This antibody pair set comes with matched antibody pair to detect and quantify protein level of human EPDR1.

Reactivity: Human

Quality Control Testing: Standard curve using EPDR1 293T overexpression lysate (non-denatured) as an analyte.



Sandwich ELISA detection sensitivity ranging from approximately 27x to 3x dilution of the EPDR1 293T overexpression lysate (non-denatured).

Supplied Product: Antibody pair set content:
 1. Capture antibody: mouse monoclonal anti-EPDR1 (100 ug)
 2. Detection antibody: rabbit purified polyclonal anti-EPDR1 (50 ug)
 *Reagents are sufficient for at least 3-5 x 96 well plates using recommended protocols.

Storage Instruction: Store reagents of the antibody pair set at -20°C or lower. Please aliquot to avoid repeated freeze thaw cycle. Reagents should be returned to -20°C storage immediately after use.

MSDS:  [Download](#)

Applications

ELISA Pair (Transfected lysate)

 [Protocol Download](#)

Gene Information

Entrez GeneID: [54749](#)

Gene Name: EPDR1

Gene Alias: EPDR, MERP-1, MERP1, UCC1

Gene Description: ependymin related protein 1 (zebrafish)

Gene Ontology: [Hyperlink](#)

Gene Summary: The protein encoded by this gene is a type II transmembrane protein and is similar to two families of cell adhesion molecules, the protocadherins and ependymins. This protein may play a role in calcium

dependent cell adhesion. [provided by RefSeq]

Other ependymin related protein 1,mammalian ependymin related protein
Designations: 1,upregulated in colorectal cancer gene 1

Related Disease

[Male Urogenital Diseases](#) [Prostate cancer](#) [Prostatic Neoplasms](#) [Tobacco Use Disorder](#)

[服務條款](#) | [隱私權政策](#) | [著作及商標](#) | [網站地圖](#)

©2016 亞諾法生技股份有限公司 Abnova Corporation. 版權所有.