



# SZABO SCANDIC

Part of Europa Biosite

## Produktinformation



Forschungsprodukte & Biochemikalien



Zellkultur & Verbrauchsmaterial



Diagnostik & molekulare Diagnostik



Laborgeräte & Service

Weitere Information auf den folgenden Seiten!  
See the following pages for more information!



### Lieferung & Zahlungsart

siehe unsere [Liefer- und Versandbedingungen](#)

### Zuschläge

- Mindermengenzuschlag
- Trockeneiszuschlag
- Gefahrgutzuschlag
- Expressversand

### SZABO-SCANDIC HandelsgmbH

Quellenstraße 110, A-1100 Wien

T. +43(0)1 489 3961-0

F. +43(0)1 489 3961-7

[mail@szabo-scandic.com](mailto:mail@szabo-scandic.com)

[www.szabo-scandic.com](http://www.szabo-scandic.com)

[linkedin.com/company/szaboscandic](https://www.linkedin.com/company/szaboscandic) 

## AHI1 (Human) IP-WB Antibody Pair

Catalog # : H00054806-PW1

規格 : [ 1 Set ]

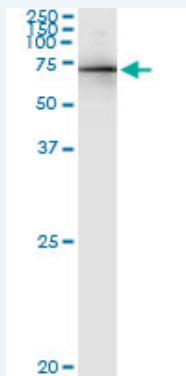
[List All](#)

### Specification

**Product Description:** This IP-WB antibody pair set comes with one antibody for immunoprecipitation and another to detect the precipitated protein in western blot.

**Reactivity:** Human

**Quality Control Testing:** Immunoprecipitation-Western Blot (IP-WB)



Immunoprecipitation of AHI1 transfected lysate using rabbit polyclonal anti-AHI1 and Protein A Magnetic Bead (U0007), and immunoblotted with mouse purified polyclonal anti-AHI1.

**Supplied Product:** Antibody pair set content:  
1. Antibody pair for IP: rabbit polyclonal anti-AHI1 (300 ul)  
2. Antibody pair for WB: mouse purified polyclonal anti-AHI1 (50 ug)

**Storage Instruction:** Store reagents of the antibody pair set at -20°C or lower. Please aliquot to avoid repeated freeze thaw cycle. Reagents should be returned to -20°C storage immediately after use.

**MSDS:**  [Download](#)

### Applications

**Immunoprecipitation-Western Blot**

 [Protocol Download](#)

### Gene Information

**Entrez GeneID:** [54806](#)

**Gene Name:** AHI1

**Gene Alias:** AHI-1, DKFZp686J1653, FLJ14023, FLJ20069, JBTS3, ORF1, dJ71N10.1

**Gene Description:** Abelson helper integration site 1

**Omim ID:** [608629](#), [608894](#)

**Gene Ontology:** [Hyperlink](#)

### Application Image

Immunoprecipitation-Western Blot

---

**Gene Summary:** This gene is apparently required for both cerebellar and cortical development in humans. This gene mutations cause specific forms of Joubert syndrome-related disorders. Joubert syndrome (JS) is a recessively inherited developmental brain disorder with several identified causative chromosomal loci. Alternatively spliced transcript variants encoding different isoforms have been identified. [provided by RefSeq]

---

**Other** OTTHUMP00000017263,OTTHUMP00000017264,OTTHUMP00000017265,  
**Designations:** contatins SH3 and WD40 domains,jouberin

---

#### **Related Disease**

---

[Abnormalities, Multiple](#) [Autistic Disorder](#) [Cerebellar Ataxia](#) [Diabetes Mellitus, Type 2](#)  
[Genetic Predisposition to Disease](#) [Kidney Diseases](#), [Cystic Mental Retardation](#)  
[Schizophrenia](#) [Schizophrenia Syndrome](#) [Tobacco Use Disorder](#)

---

[服務條款](#) | [隱私權政策](#) | [著作及商標](#) | [網站地圖](#)

©2016 亞諾法生技股份有限公司 Abnova Corporation. 版權所有.