



SZABO SCANDIC

Part of Europa Biosite

Produktinformation



Forschungsprodukte & Biochemikalien



Zellkultur & Verbrauchsmaterial



Diagnostik & molekulare Diagnostik



Laborgeräte & Service

Weitere Information auf den folgenden Seiten!
See the following pages for more information!



Lieferung & Zahlungsart

siehe unsere [Liefer- und Versandbedingungen](#)

Zuschläge

- Mindermengenzuschlag
- Trockeneiszuschlag
- Gefahrgutzuschlag
- Expressversand

SZABO-SCANDIC HandelsgmbH

Quellenstraße 110, A-1100 Wien

T. +43(0)1 489 3961-0

F. +43(0)1 489 3961-7

mail@szabo-scandic.com

www.szabo-scandic.com

[linkedin.com/company/szaboscandic](https://www.linkedin.com/company/szaboscandic) 

ATG16L1 (Human) IP-WB Antibody Pair

Catalog # : H00055054-PW1

規格 : [1 Set]

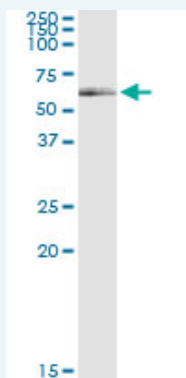
[List All](#)

Specification

Product Description: This IP-WB antibody pair set comes with one antibody for immunoprecipitation and another to detect the precipitated protein in western blot.

Reactivity: Human

Quality Control Testing: Immunoprecipitation-Western Blot (IP-WB)



Immunoprecipitation of ATG16L1 transfected lysate using rabbit polyclonal anti-ATG16L1 and Protein A Magnetic Bead (U0007), and immunoblotted with mouse purified polyclonal anti-ATG16L1.

Supplied Product: Antibody pair set content:
 1. Antibody pair for IP: rabbit polyclonal anti-ATG16L1 (300 ul)
 2. Antibody pair for WB: mouse purified polyclonal anti-ATG16L1 (50 ug)

Storage Instruction: Store reagents of the antibody pair set at -20°C or lower. Please aliquot to avoid repeated freeze thaw cycle. Reagents should be returned to -20°C storage immediately after use.

MSDS: [Download](#)

Applications

Immunoprecipitation-Western Blot

[Protocol Download](#)

Gene Information

Entrez GeneID: [55054](#)

Gene Name: ATG16L1

Gene Alias: APG16L, ATG16L, FLJ00045, FLJ10035, FLJ10828, FLJ22677, IBD10, WD R30

Gene Description: ATG16 autophagy related 16-like 1 (S. cerevisiae)

Omim ID: [610767](#), [611081](#)

Application Image

Immunoprecipitation-Western Blot

Gene Ontology: [Hyperlink](#)

Gene Summary: Autophagy is the major intracellular degradation system delivering cytoplasmic components to lysosomes, and it accounts for degradation of most long-lived proteins and some organelles. Cytoplasmic constituents, including organelles, are sequestered into double-membraned autophagosomes, which subsequently fuse with lysosomes. ATG16L1 is a component of a large protein complex essential for autophagy (Mizushima et al., 2003 [PubMed 12665549]).[supplied by OMIM]

Other Designations: APG16 autophagy 16-like,APG16L beta,ATG16 autophagy related 16-like protein 1,WD repeat domain 30

Related Disease

[Celiac Disease](#) [Cholangitis](#), [Sclerosing Colitis](#), [Ulcerative Crohn Disease](#) [Crohn's disease](#) [Disease Progression](#) [Disease Susceptibility](#) [Genetic Predisposition to Disease](#) [Granuloma](#) [Growth Disorders](#) [Huntington Disease](#) [Ileitis](#) [Inflammatory Bowel Diseases](#) [Liver Cirrhosis](#), [Biliary](#) [Rectal Fistula](#)

[服務條款](#) | [隱私權政策](#) | [著作及商標](#) | [網站地圖](#)

©2016 亞諾法生技股份有限公司 Abnova Corporation. 版權所有.