



# SZABO SCANDIC

Part of Europa Biosite

## Produktinformation



Forschungsprodukte & Biochemikalien



Zellkultur & Verbrauchsmaterial



Diagnostik & molekulare Diagnostik



Laborgeräte & Service

Weitere Information auf den folgenden Seiten!  
See the following pages for more information!



### Lieferung & Zahlungsart

siehe unsere [Liefer- und Versandbedingungen](#)

### Zuschläge

- Mindermengenzuschlag
- Trockeneiszuschlag
- Gefahrgutzuschlag
- Expressversand

### SZABO-SCANDIC HandelsgmbH

Quellenstraße 110, A-1100 Wien

T. +43(0)1 489 3961-0

F. +43(0)1 489 3961-7

[mail@szabo-scandic.com](mailto:mail@szabo-scandic.com)

[www.szabo-scandic.com](http://www.szabo-scandic.com)

[linkedin.com/company/szaboscandic](https://www.linkedin.com/company/szaboscandic) 

# Express Cloning Checker Kits

## Features

- Rapid and efficient identification of recombinant colonies within 1 hour
- Large-scale screening up to hundreds of colonies in short time
- Quick check of insert sizes in constructed cDNA libraries
- Restriction enzyme analyzing of recombinants directly from bacteria without preparation of plasmid DNA
- Compatible with most commonly used E. coli. bacteria from plate colonies, liquid culture or glycerol stock
- Replacing time-consuming DNA miniprep and restriction enzyme digestions or colony PCR

## Kit contents and storage

There are three types of kit. Check which kit you have.

**Kit I** Cat # K5011200 (200 reactions) Previous Cat# 035301

Shipment condition: Room Temperature

| Contents  | Volume | Storage          |
|---|--------|------------------|
| Red solution  | 1.0 ml | Room temperature |
| Yellow solution   | 1.0 ml | Room temperature |
| Supercoiled DNA marker* (size: 3.0, 3.9, 5.4, 7.0, 10 kb) | 2 µg   | Room temperature |
| Screening plates  | 1      | Room temperature |

**Kit II** Cat # K5012100 (100 reactions) Previous Cat# 035302

Shipment condition: Room Temperature

| Contents       | Volume | Storage          |
|----------------|--------|------------------|
| Green solution | 0.8 ml | Room temperature |
| Blue solution  | 0.2 ml | Room temperature |

**Kit III** Cat # K5013200 (200 reactions) Previous Cat# 035303

Shipment condition: Room Temperature

| Contents  | Volume | Storage          |
|---|--------|------------------|
| Red solution  | 0.5 ml | Room temperature |
| Yellow solution   | 0.5 ml | Room temperature |
| Green solution  | 0.8 ml | Room temperature |
| Blue solution   | 0.2 ml | Room temperature |
| Supercoiled DNA marker* (size: 3.0, 3.9, 5.4, 7.0, 10 kb) | 2 µg   | Room temperature |
| Screening plates  | 1      | Room temperature |

- Supercoiled DNA marker has been freeze-dried for room temperature storage, add 20 µl sterile water and mix by vortex and spinning briefly several rounds before use. The resulted marker concentration is 100 ng/µl and should be stored at -20 °C.

## Brief protocol:

### A. Large scale screen method (Kit I and Kit III):

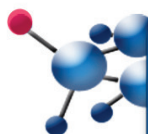
1. Pick up bacteria colonies and stir in 5 µl of Red solution.
2. Add 5 µl of Yellow solution.
3. Run gel and check results.

### B. Enzyme digest method (Kit II and Kit III):

1. Pick up bacteria colonies and stir in 8 µl of Green solution.
2. Heat at 100° C for 30 seconds.
3. Add 2 µl of enzyme mix and incubate at appropriate temperature for 30 minutes.
4. Add 2 µl of Blue solution.
5. Run gel and check results.

## Special notice for using the kit:

- Use freshly prepared culture plates
- Spread less 300 bacterial colonies per plate
- Post-stain gel (no EB in gel and running buffer)
- Add 20 µl sterile water in Supercoiled DNA marker tube and mix it before use. Store at -20 °C.



#### UK & Rest of World

184 Milton Park, Abingdon  
OX14 4SE, Oxon, UK  
Tel: +44 (0) 1235 828 200  
Fax: +44 (0) 1235 820 482

#### Switzerland

Centro Nord-Sud 2E  
CH-6934 Bioggio-Lugano  
Tel: +41 (0) 91 604 55 22  
Fax: +41 (0) 91 605 17 85

#### Deutschland

Bockenheimer Landstr. 17/19  
60325 Frankfurt/Main  
Tel: +49 (0) 69 779099  
Fax: +49 (0) 69 13376880

#### United States

23591 El Toro Rd, Suite #167  
Lake Forest, CA 92630  
Tel: +1 800 987 0985  
Fax: +1 949 265 7703

**Detailed protocol****A. Supercoiled Plasmid Analysis (for Kit I and Kit III)**

After overnight culture (16- 24 hours) of transformation reaction:

1. Pour a 0.8 to 1.2 % agarose gel with thin comb (thickness less than 1 mm recommended). Do not submerge the gel in running buffer before sample loading.
2. Mark 10 to 30 well separated colonies with numbers on the bottoms of transformation plates<sup>1</sup>.
3. Add 5 µl of Red solution per well of screening plate supplied by the kit or micro-tubes. The screen plate can be used repeatedly after wash.
4. Pick up partial bacterial colony<sup>2</sup> (50 % to 25% if a colony size around 1.5 - 2.5 mm in diameter) of each selected colony with pipette tips. Stir attached bacteria 2 or 3 times into Red solution in wells or tubes from step 2. If the whole colony has been picked up, place the plate back to 37° C and incubate for a desired period after this step is done.
5. Prepare DNA marker. a) Use supercoiled DNA marker provided in kit. Add 20 µl of sterile water into DNA marker and mix by vortex and spinning briefly several rounds before the first use. Take 2 µl of the marker and add it into 5 µl of Red solution. b). Use your own marker. Take 10 - 30 ng (in 2 µl volume) of vector DNA without insert and add it into 5 µl the Red solution.
6. Add 5 µl of Yellow solution to each well or tube containing bacteria or DNA marker.
7. Mix samples by pipeting up and down 2 or 3 times and load them directly into loading wells of agarose gel<sup>3</sup> before setting the gel in running buffer.  
Option: if using micro-tubes, but not supplied screening plate from step 3, one may load the samples in submerged gel in running buffer as an usual electrophoresis by following steps: 1) briefly mix samples after adding of Yellow Solutions; 2) add 4 µl of Blue buffer to each reaction; 3) vortex samples for about 15 seconds before loading samples. These extra steps can increase target DNA signals and avoid defused bands generated from a none-fresh gel. So, it is only recommended to use if checking low-copy number plasmid clones or screening large quantity of colonies (more than 40).
8. Set the gel with loaded samples in running buffer (1x TAE or TBE) and begin electrophoresis. Make sure running buffer gets into every loading well without bubbles. After the red dye band<sup>4</sup> reaching 3-4 cm from loading well (cloning of small inserts less than 300 bp needs a little longer running), stop running and visualize the DNA by staining the gel in 0.2 - 0.5 µg/ml ethidium bromide<sup>5</sup>.
9. Examine the gel by UV transillumination. Due to low-copy number of plasmid DNA in some bacterial strain, photography of gel may need to use high aperture (4.5) and long exposure (2 to 5 seconds). Recombinant colonies will migrate slower in the gel than the vector without insert<sup>6</sup>. Now go back the original plates and select corresponding recombinant colonies to culture or stock for further analysis.

**B. Restriction Enzyme Digestion Analysis (for Kit II and Kit III to check size and orientation of inserts or restriction site information)**

1. Mark 10 to 30 well separated colonies with numbers on the bottoms of transformation plates<sup>1</sup>.
2. Add 8 µl of green solution in each microcentrifuge tube or wells of 96-well plate.
3. Pick up partial bacterial colony<sup>2</sup> (50% to 25% if a colony size around 1.5 - 2.5 mm in diameter) of each selected colony with small pipet tips<sup>7</sup> and stir the attached bacteria 2 or 3 times into Green solution in tubes or wells from step 2. If the whole colony has been picked up, place the plate back to 37° C and incubate for a desired while after the step is done.
4. Heat the samples at 100 ° C for 30 seconds in boiled water or by using PCR machine.
5. After the samples cool down to room temperature, add 2 µl of digest mix containing 1µl of 10 x digest buffer and appropriate restriction enzymes (1 - 5 unit per reaction).
6. Incubate the samples at appropriate temperature for 10 - 30 min<sup>8</sup>.
7. Pour a 0.8 to 1.5 % agarose gel<sup>3</sup> with thin comb (thickness less than 1 mm recommended).
8. Add 2 µl of Blue solution in each reaction and mix them.
9. Load samples in wells of the agarose gel. Finally, load linearized DNA size marker (not supplied in the kit) for DNA mobility comparison.
10. Begin electrophoresis in running buffer (1x TAE or TBE). Make sure running buffer gets into every loading well without bubbles. After the first dye (blue band) reaching about 3 - 4 cm length from loading well of the gel, stop running and visualize the DNA by staining the gel in 0.2 - 0.5 µg/ml ethidium bromide<sup>4</sup>.
11. Examine the gel by UV transillumination. Due to low copy number of plasmid DNA in some bacterial strain, photography of gel may need to use high aperture (4.5) and long exposure (2 - 5 seconds). Now go back to the original plates and select corresponding recombinant colonies to culture or stock for further analysis.

<sup>1</sup> Use freshly prepared plates to culture bacterial colonies. To get well-separated and well-grown colonies, spreading of less 300 colonies per plate is recommended. Old bacterial colonies in plates, which are stored or cultured for several days, may produce weaker DNA bands.

<sup>2</sup> Take 1 to 3 µl of bacterial culture or plasmid stock strain instead of colonies if bacterial culture of a clone is available.

<sup>3</sup> It is recommended to use freshly prepared gel (within 30 minutes after pouring off). Over-dried gel will generate diffused bands. Use 1.5% agarose gel if checking small inserts (less than 300 bp).

<sup>4</sup> Red dye migrates through agarose gel slower than bromophenol blue at approximately the same rate as linear double-stranded DNA 1.2 kb in length.

<sup>5</sup> It is strongly recommended using post-staining of gel and fresh staining buffer, which is made from EB stock solution. Adding EB in electrophoresis buffer or in gel will result in inconsistent migration of plasmid DNA.

<sup>6</sup> There may be four bands observable (like lane 5, Fig 1) for each colony if picking up large piece of colonies and gel running time long enough. The fastest moving DNA bands, which are bigger than 2.5 kb, are strong and informative. Sometimes non-nucleic acid material and RNA will show up like diffused bands on bottom of gel, so comparison should be made between the informative bands of colony plasmid and that of control markers.

<sup>7</sup> Avoid using of toothpicks to pick up colonies at this step because it absorbs the green solution.

<sup>8</sup> Add more enzymes will shorten the incubation period. Over-incubation may result in digesting of genomic DNA and increasing background.

## Analysis of recombinant colonies with 1% agarose gel

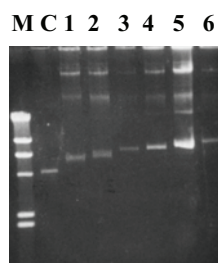


Fig 1. Large scale screening analysis of recombinant colonies with different size of inserts which were demonstrated in lane 1 through 6 with comparison of the control vector without insert DNA (lane C, 5.4 kb). Lane M is *Hind* III/ lambda DNA marker.

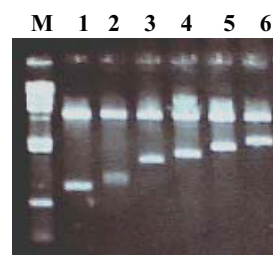


Fig 2. Enzyme digest analysis of the extracted plasmid DNA of these recombinant colonies in Fig 2 after minipreparation showing that they contains 0.9, 1.2, 1.7, 1.9, 2.2 and 2.5 kb insert respectively. At least 200 bp insert can be distinguished by the large scale screen method.

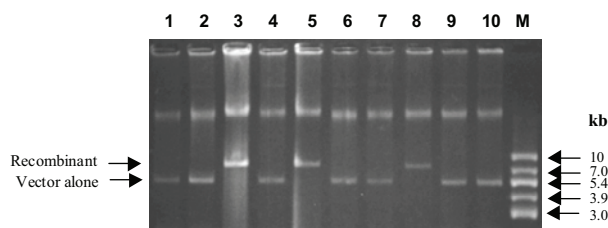


Fig 3. Large scale screening of recombinant colonies. Partial colonies were picked up directly from overnight cultured transformation plates and treated with red and yellow solutions before electrophoresis. Three recombinants with 2.5 kb insert (lanes 3, 5 and 8) are identified. Lane M is the supercoiled DNA marker supplied in the kit.

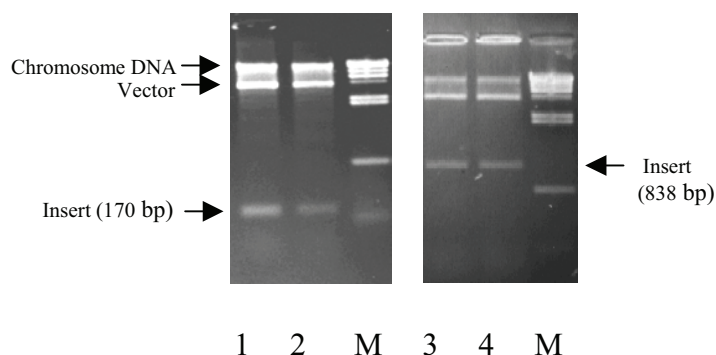


Fig 4. Enzyme digest analysis of recombinant colonies. Recombinant colonies were picked up directly from overnight cultured transformation plates in green solution and followed by restriction enzyme digestion (*Hind* III/*Xba* I, lanes 1 and 2; *EcoR* I lanes 3 and 4) for 30 minutes at 37 °C. Lane M is *Hind* III/lambda DNA marker.



### UK & Rest of World

184 Milton Park, Abingdon  
OX14 4SE, Oxon, UK  
Tel: +44 (0) 1235 828 200  
Fax: +44 (0) 1235 820 482

### Switzerland

Centro Nord-Sud 2E  
CH-6934 Bioggio-Lugano  
Tel: +41 (0) 91 604 55 22  
Fax: +41 (0) 91 605 17 85

### Deutschland

Bockenheimer Landstr. 17/19  
60325 Frankfurt/Main  
Tel: +49 (0) 69 779099  
Fax: +49 (0) 69 13376880

### United States

23591 El Toro Rd, Suite #167  
Lake Forest, CA 92630  
Tel: +1 800 987 0985  
Fax: +1 949 265 7703

**amsbio**  
info@amsbio.com