



SZABO SCANDIC

Part of Europa Biosite

Produktinformation



Forschungsprodukte & Biochemikalien



Zellkultur & Verbrauchsmaterial



Diagnostik & molekulare Diagnostik



Laborgeräte & Service

Weitere Information auf den folgenden Seiten!
See the following pages for more information!



Lieferung & Zahlungsart

siehe unsere [Liefer- und Versandbedingungen](#)

Zuschläge

- Mindermengenzuschlag
- Trockeneiszuschlag
- Gefahrgutzuschlag
- Expressversand

SZABO-SCANDIC Handels GmbH

Quellenstraße 110, A-1100 Wien

T. +43(0)1 489 3961-0

F. +43(0)1 489 3961-7

mail@szabo-scandic.com

www.szabo-scandic.com

[linkedin.com/company/szaboscandic](https://www.linkedin.com/company/szaboscandic) 

Rabbit IgG Heavy and Light Chain Antibody

Goat Polyclonal

Conjugate Biotin

Antigen Affinity Purified

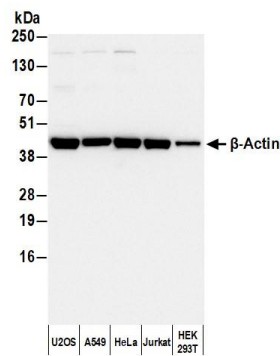
Catalog No. A120-101B

Lot No. 23

APPLICATIONS	WB, IHC, ICC, ELISA								
SPECIES REACTIVITY	Rabbit								
AMOUNT	1 ml								
CONCENTRATION	1 mg/ml								
STORAGE/SHELF LIFE	2 – 8°C / 1 year from date of receipt								
PHYSICAL STATE	Liquid								
BUFFER	Phosphate Buffered Saline (PBS) containing 0.2% BSA and 0.09% Sodium Azide								
ISOTYPE	IgG								
ORIGIN	USA								
PRODUCTION PROCEDURES	<p>The antibody was isolated by affinity chromatography using antigen coupled to agarose beads and conjugated to biotin.</p> <p>Prior to conjugation, immunoglobulin concentration was determined using Beer’s Law where 1mg/mL IgG has an A280 of 1.4. Biotin/antibody protein ratio is 4:1.</p> <p>By immunoelectrophoresis and ELISA this antibody reacts specifically with rabbit IgG and with light chains common to other rabbit immunoglobulins. No antibody was detected against non-immunoglobulin serum proteins. This antibody may cross react with IgG from other species.</p> <p>Biotinylated antibody was demonstrated by reaction with avidin/peroxidase when coated on microtiter wells. Working dilutions should be determined by the investigator.</p>								
APPLICATIONS	<p>Centrifuge tube to remove product from lid. Optimal working dilutions should be determined experimentally by the investigator. Prepare working dilution immediately before use.</p> <table><tr><td>Western Blot</td><td>1:20,000 – 1:400,000</td></tr><tr><td>Immunohistochemistry</td><td>1:500 – 1:5000</td></tr><tr><td>Immunocytochemistry</td><td>1:200 – 1:1000</td></tr><tr><td>ELISA</td><td>1:20,000 – 1:400,000</td></tr></table>	Western Blot	1:20,000 – 1:400,000	Immunohistochemistry	1:500 – 1:5000	Immunocytochemistry	1:200 – 1:1000	ELISA	1:20,000 – 1:400,000
Western Blot	1:20,000 – 1:400,000								
Immunohistochemistry	1:500 – 1:5000								
Immunocytochemistry	1:200 – 1:1000								
ELISA	1:20,000 – 1:400,000								
APPLICATION NOTES	Not all listed applications have been specifically tested by our laboratory.								
ADDITIONAL INFO	<p>https://www.fortislife.com/p/A120-101B</p> <p>Use the link above to view SDS, a current list of citations, and other product specific information.</p>								

This document certifies that this product has met all of the quality control standards defined by Bethyl Laboratories, Inc.
Michael Spencer, PhD

Date: June 11, 2024



Detection of human β -Actin by western blot with Biotinylated Goat anti-Rabbit IgG Heavy and Light Chain Antibody. *Samples:* Whole cell lysate (50 μ g) from U2OS, A549, HeLa, Jurkat, and HEK293T cells prepared using NETN lysis buffer. *Antibody:* Affinity Purified Rabbit anti- β -Actin Antibody (A300-491A) used for WB at 0.04 μ g/ml. *Secondary:* Biotinylated Goat anti-Rabbit IgG Heavy and Light Chain Antibody (A120-101B). *Tertiary:* HRP-conjugated Rabbit anti-Biotin Antibody (A150-109P). *Detection:* Chemiluminescence with an exposure time of 1 second.