



# SZABO SCANDIC

Part of Europa Biosite

## Produktinformation



Forschungsprodukte & Biochemikalien



Zellkultur & Verbrauchsmaterial



Diagnostik & molekulare Diagnostik



Laborgeräte & Service

Weitere Information auf den folgenden Seiten!  
See the following pages for more information!



### Lieferung & Zahlungsart

siehe unsere [Liefer- und Versandbedingungen](#)

### Zuschläge

- Mindermengenzuschlag
- Trockeneiszuschlag
- Gefahrgutzuschlag
- Expressversand

### SZABO-SCANDIC Handels GmbH

Quellenstraße 110, A-1100 Wien

T. +43(0)1 489 3961-0

F. +43(0)1 489 3961-7

[mail@szabo-scandic.com](mailto:mail@szabo-scandic.com)

[www.szabo-scandic.com](http://www.szabo-scandic.com)

[linkedin.com/company/szaboscandic](https://www.linkedin.com/company/szaboscandic)



**BETHYL** | **FORTIS**  
LABORATORIES, INC. | LIFE SCIENCES

APPLICATIONS	IHC, ICC, Flow Cyt, IF
SPECIES REACTIVITY	Rabbit
AMOUNT	1 ml
CONCENTRATION	0.5 mg/ml
STORAGE/SHELF LIFE	2 – 8°C / 1 year from date of receipt
PHYSICAL STATE	Liquid
BUFFER	Phosphate Buffered Saline (PBS) containing 0.2% BSA and 0.09% Sodium Azide
FLUOROPHORE/PROTEIN	7.9
ISOTYPE	IgG
ORIGIN	USA
PRODUCTION PROCEDURES	The antibody was isolated by affinity chromatography using antigen coupled to agarose beads and conjugated to DyLight® 650.

By immunoelectrophoresis and ELISA this antibody reacts specifically with rabbit IgG and with light chains common to other rabbit immunoglobulins. No antibody was detected against non-immunoglobulin serum proteins. This antibody may cross react with IgG from other species.

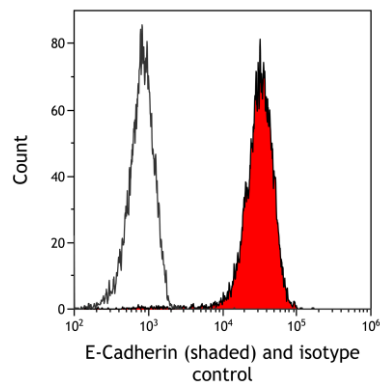
Immunohistochemistry	1:50 – 1:500
Immunocytochemistry	1:50 – 1:500
Flow Cytometry	1:50 – 1:200
Immunofluorescence	1:50 – 1:500

DyLight® 650 is excited at 652 (in PBS) and emits at 672 (in PBS). DyLight® 650 replaces DyLight® 649.

**ADDITIONAL INFO** <https://www.fortislife.com/p/A120-101D5>

Use the link above to view SDS, a current list of citations, and other product specific information.

Phone: 800.338.9579 • Fax: 866.597.6105 • Web: [www.fortislife.com](http://www.fortislife.com)  
Orders: [orders@fortislife.com](mailto:orders@fortislife.com) • Support: [technical@fortislife.com](mailto:technical@fortislife.com)



**Detection of human E-Cadherin (shaded) in HT29 cells by flow cytometry.** *Antibody:* Rabbit anti-E-Cadherin recombinant monoclonal antibody [BLR088G] (A700-088) or isotype control (unshaded). *Secondary:* DyLight® 650-conjugated goat anti-rabbit IgG (A120-101D5).