



SZABO SCANDIC

Part of Europa Biosite

Produktinformation



Forschungsprodukte & Biochemikalien



Zellkultur & Verbrauchsmaterial



Diagnostik & molekulare Diagnostik



Laborgeräte & Service

Weitere Information auf den folgenden Seiten!
See the following pages for more information!



Lieferung & Zahlungsart

siehe unsere [Liefer- und Versandbedingungen](#)

Zuschläge

- Mindermengenzuschlag
- Trockeneiszuschlag
- Gefahrgutzuschlag
- Expressversand

SZABO-SCANDIC HandelsgmbH

Quellenstraße 110, A-1100 Wien

T. +43(0)1 489 3961-0

F. +43(0)1 489 3961-7

mail@szabo-scandic.com

www.szabo-scandic.com

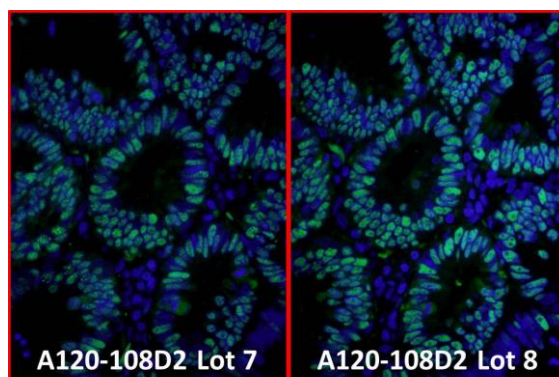
[linkedin.com/company/szaboscandic](https://www.linkedin.com/company/szaboscandic) 

Rabbit IgG Heavy and Light Chain Antibody

Donkey Polyclonal
Antigen Affinity Purified
Catalog No. A120-108D2
Lot No. 18

APPLICATIONS	IHC, ICC, Flow Cyt, IF								
SPECIES REACTIVITY	Rabbit								
AMOUNT	1 ml								
CONCENTRATION	0.5 mg/ml								
STORAGE/SHELF LIFE	2 – 8°C / 1 year from date of receipt								
PHYSICAL STATE	Liquid								
BUFFER	Phosphate Buffered Saline (PBS) containing 0.2% BSA and 0.09% Sodium Azide								
FLUOROPHORE/PROTEIN	7.1								
ISOTYPE	IgG								
ORIGIN	USA								
PRODUCTION PROCEDURES	<p>The antibody was isolated by affinity chromatography using antigen coupled to agarose beads and conjugated to DyLight® 488.</p> <p>Prior to conjugation, immunoglobulin concentration was determined using Beer's Law where 1mg/mL IgG has an A280 of 1.4.</p> <p>By immunoelectrophoresis and ELISA this antibody reacts specifically with rabbit IgG and with light chains common to other rabbit immunoglobulins. No antibody was detected against non-immunoglobulin serum proteins. This antibody may cross react with IgG from other species.</p>								
APPLICATIONS	<p>Centrifuge tube to remove product from lid. Optimal working dilutions should be determined experimentally by the investigator. Prepare working dilution immediately before use.</p> <table><tr><td>Immunohistochemistry</td><td>1:50 – 1:500</td></tr><tr><td>Immunocytochemistry</td><td>1:50 – 1:500</td></tr><tr><td>Flow Cytometry</td><td>1:50 – 1:200</td></tr><tr><td>Immunofluorescence</td><td>1:50 – 1:500</td></tr></table>	Immunohistochemistry	1:50 – 1:500	Immunocytochemistry	1:50 – 1:500	Flow Cytometry	1:50 – 1:200	Immunofluorescence	1:50 – 1:500
Immunohistochemistry	1:50 – 1:500								
Immunocytochemistry	1:50 – 1:500								
Flow Cytometry	1:50 – 1:200								
Immunofluorescence	1:50 – 1:500								
APPLICATION NOTES	<p>Not all listed applications have been specifically tested by our laboratory.</p> <p>DyLight® 488 is excited at 493 (in PBS) and emits at 518 (in PBS).</p>								
ADDITIONAL INFO	<p>DyLight® is a trademark of Thermo Fisher Scientific Inc. and its subsidiaries.</p> <p>https://www.fortislife.com/p/A120-108D2</p> <p>Use the link above to view SDS, a current list of citations, and other product specific information.</p>								

This document certifies that this product has met all of the quality control standards defined by Bethyl Laboratories, Inc.
Michael Spencer, PhD Date: April 25, 2025

**Detection of human PCNA by immunofluorescence.**

Samples: FFPE sections of human stomach carcinoma.

Primary Antibody: Affinity purified rabbit anti-PCNA (Cat. No. IHC-00012 Lot1) used at a dilution of 1:100.

Secondary Antibody: Green-fluorescent donkey anti-rabbit IgG-heavy and light chain Antibody DyLight® 488 Conjugated (A120-108D2 Lot 7 and Lot 8) used at a dilution of 1:100 (5µg/ml). *Counterstain:* DAPI (blue)