



SZABO SCANDIC

Part of Europa Biosite

Produktinformation



Forschungsprodukte & Biochemikalien



Zellkultur & Verbrauchsmaterial



Diagnostik & molekulare Diagnostik



Laborgeräte & Service

Weitere Information auf den folgenden Seiten!
See the following pages for more information!



Lieferung & Zahlungsart

siehe unsere [Liefer- und Versandbedingungen](#)

Zuschläge

- Mindermengenzuschlag
- Trockeneiszuschlag
- Gefahrgutzuschlag
- Expressversand

SZABO-SCANDIC HandelsgmbH

Quellenstraße 110, A-1100 Wien

T. +43(0)1 489 3961-0

F. +43(0)1 489 3961-7

mail@szabo-scandic.com

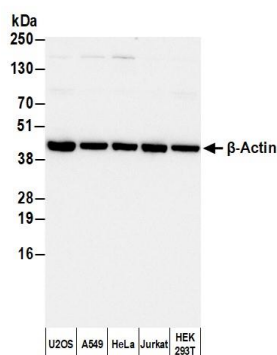
www.szabo-scandic.com

[linkedin.com/company/szaboscandic](https://www.linkedin.com/company/szaboscandic) 

BETHYL **FORTIS**
LABORATORIES, INC. LIFE SCIENCES

APPLICATIONS	WB, IHC, ICC, ELISA								
SPECIES REACTIVITY	Rabbit								
AMOUNT	1 ml								
CONCENTRATION	1 mg/ml								
STORAGE/SHELF LIFE	2 – 8°C / 1 year from date of receipt								
PHYSICAL STATE	Liquid								
BUFFER	Phosphate Buffered Saline (PBS) containing 0.2% BSA and 0.09% Sodium Azide								
ISOTYPE	IgG								
ORIGIN	USA								
PRODUCTION PROCEDURES	<p>Antiserum was solid phase adsorbed to ensure class specificity. The antibody was isolated by affinity chromatography using antigen coupled to agarose beads and conjugated to biotin.</p> <p>Prior to conjugation, immunoglobulin concentration was determined using Beer's Law where 1 mg/mL IgG has an A280 of 1.4.</p> <p>By immunoelectrophoresis, this antibody reacts specifically with rabbit IgG. This antibody may cross react with IgG from other species.</p>								
APPLICATIONS	<p>Centrifuge tube to remove product from lid. Optimal working dilutions should be determined experimentally by the investigator. Prepare working dilution immediately before use.</p> <table><tr><td>Western Blot</td><td>1:20,000 – 1:400,000</td></tr><tr><td>Immunohistochemistry</td><td>1:500 – 1:5000</td></tr><tr><td>Immunocytochemistry</td><td>1:200 – 1:1000</td></tr><tr><td>ELISA</td><td>1:20,000 – 1:400,000</td></tr></table>	Western Blot	1:20,000 – 1:400,000	Immunohistochemistry	1:500 – 1:5000	Immunocytochemistry	1:200 – 1:1000	ELISA	1:20,000 – 1:400,000
Western Blot	1:20,000 – 1:400,000								
Immunohistochemistry	1:500 – 1:5000								
Immunocytochemistry	1:200 – 1:1000								
ELISA	1:20,000 – 1:400,000								
APPLICATION NOTES	Not all listed applications have been specifically tested by our laboratory.								
ADDITIONAL INFO	<p>https://www.fortislife.com/p/A120-111B</p> <p>Use the link above to view SDS, a current list of citations, and other product specific information.</p>								

This document certifies that this product has met all of the quality control standards defined by Bethyl Laboratories, Inc.
Michael Spencer, PhD Date: February 6, 2024



Detection of human β -Actin by western blot with Biotinylated Goat anti-Rabbit IgG-Fc Fragment Antibody.

Samples: Whole cell lysate (50 μ g) from U2OS, A549, HeLa, Jurkat, and HEK293T cells prepared using NETN lysis buffer. *Antibody:* Affinity Purified Rabbit anti- β -Actin Antibody (A300-491A) used for WB at 0.04 μ g/ml.

Secondary: Biotinylated Goat anti-Rabbit IgG-Fc Fragment Antibody (A120-111B). *Tertiary:* HRP-conjugated Rabbit anti-Biotin Antibody (A150-109P). *Detection:* Chemiluminescence with an exposure time of 1 second.