



# SZABO SCANDIC

Part of Europa Biosite

## Produktinformation



Forschungsprodukte & Biochemikalien



Zellkultur & Verbrauchsmaterial



Diagnostik & molekulare Diagnostik



Laborgeräte & Service

Weitere Information auf den folgenden Seiten!  
See the following pages for more information!



### Lieferung & Zahlungsart

siehe unsere [Liefer- und Versandbedingungen](#)

### Zuschläge

- Mindermengenzuschlag
- Trockeneiszuschlag
- Gefahrgutzuschlag
- Expressversand

### SZABO-SCANDIC HandelsgmbH

Quellenstraße 110, A-1100 Wien

T. +43(0)1 489 3961-0

F. +43(0)1 489 3961-7

[mail@szabo-scandic.com](mailto:mail@szabo-scandic.com)

[www.szabo-scandic.com](http://www.szabo-scandic.com)

[linkedin.com/company/szaboscandic](https://www.linkedin.com/company/szaboscandic) 

# Rabbit IgG Heavy and Light Chain Cross-Adsorbed Antibody

Goat Polyclonal Conjugate Biotin

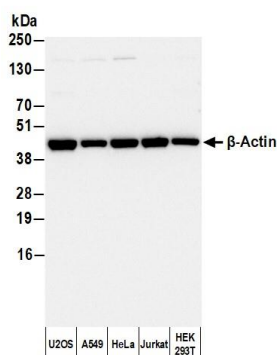
Antigen Affinity Purified

Catalog No. A120-201B

Lot No. 13

<b>APPLICATIONS</b>	WB, IHC, ICC, ELISA								
<b>SPECIES REACTIVITY</b>	Rabbit. Minimum reactivity to bovine, chicken, horse, human, mouse, pig and rat								
<b>AMOUNT</b>	1 ml								
<b>CONCENTRATION</b>	0.5 mg/ml								
<b>STORAGE/SHELF LIFE</b>	2 – 8°C / 1 year from date of receipt								
<b>PHYSICAL STATE</b>	Liquid								
<b>BUFFER</b>	Phosphate Buffered Saline (PBS) containing 0.2% BSA and 0.09% Sodium Azide								
<b>ISOTYPE</b>	IgG								
<b>ORIGIN</b>	USA								
<b>PRODUCTION PROCEDURES</b>	<p>Antiserum was cross adsorbed using bovine, chicken, horse, human, mouse, pig and rat immunosorbents to remove cross reactive antibodies. The antibody to rabbit IgG was isolated by affinity chromatography using antigen coupled to agarose beads and conjugated to biotin.</p> <p>Immunoglobulin concentration was determined using Beer's Law where 1mg/mL IgG has an A280 of 1.4. Biotin/antibody protein ratio is 4:1.</p> <p>By immunoelectrophoresis and ELISA this antibody reacts specifically with rabbit IgG and with light chains common to other rabbit immunoglobulins. No antibody was detected against non-immunoglobulin serum proteins. Less than 1% cross reactivity to bovine, chicken, goat, horse, human, mouse, pig and rat IgG was detected. This antibody may cross react with IgG from other species. Biotinylated antibody was demonstrated by reaction with avidin/peroxidase when coated on microtiter wells. Working dilutions should be determined by the investigator.</p>								
<b>APPLICATIONS</b>	<p>Centrifuge tube to remove product from lid. Optimal working dilutions should be determined experimentally by the investigator. Prepare working dilution immediately before use.</p> <table><tr><td>Western Blot</td><td>1:10,000 – 1:200,000</td></tr><tr><td>Immunohistochemistry</td><td>1:250 – 1:2500</td></tr><tr><td>Immunocytochemistry</td><td>1:100 – 1:500</td></tr><tr><td>ELISA</td><td>1:10,000 – 1:200,000</td></tr></table>	Western Blot	1:10,000 – 1:200,000	Immunohistochemistry	1:250 – 1:2500	Immunocytochemistry	1:100 – 1:500	ELISA	1:10,000 – 1:200,000
Western Blot	1:10,000 – 1:200,000								
Immunohistochemistry	1:250 – 1:2500								
Immunocytochemistry	1:100 – 1:500								
ELISA	1:10,000 – 1:200,000								
<b>APPLICATION NOTES</b>	Not all listed applications have been specifically tested by our laboratory.								
<b>ADDITIONAL INFO</b>	<p><a href="https://www.fortislifesciences.com/p/A120-201B">https://www.fortislifesciences.com/p/A120-201B</a></p> <p>Use the link above to view SDS, a current list of citations, and other product specific information.</p>								

This document certifies that this product has met all of the quality control standards defined by Bethyl Laboratories, Inc.  
Michael Spencer, PhD Date: February 6, 2024



**Detection of human  $\beta$ -Actin by western blot with Biotinylated Goat anti-Rabbit IgG Heavy and Light Chain Cross-Adsorbed Antibody.** *Samples:* Whole cell lysate (50  $\mu$ g) from U2OS, A549, HeLa, Jurkat, and HEK293T cells prepared using NETN lysis buffer. *Antibody:* Affinity Purified Rabbit anti- $\beta$ -Actin Antibody (A300-491A) used for WB at 0.04  $\mu$ g/ml. *Secondary:* Biotinylated Goat anti-Rabbit IgG Heavy and Light Chain Cross-Adsorbed Antibody (A120-201B). *Tertiary:* HRP-conjugated Rabbit anti-Biotin Antibody (A150-109P). *Detection:* Chemiluminescence with an exposure time of 1 second.