



SZABO SCANDIC

Part of Europa Biosite

Produktinformation



Forschungsprodukte & Biochemikalien



Zellkultur & Verbrauchsmaterial



Diagnostik & molekulare Diagnostik



Laborgeräte & Service

Weitere Information auf den folgenden Seiten!
See the following pages for more information!



Lieferung & Zahlungsart

siehe unsere [Liefer- und Versandbedingungen](#)

Zuschläge

- Mindermengenzuschlag
- Trockeneiszuschlag
- Gefahrgutzuschlag
- Expressversand

SZABO-SCANDIC HandelsgmbH

Quellenstraße 110, A-1100 Wien

T. +43(0)1 489 3961-0

F. +43(0)1 489 3961-7

mail@szabo-scandic.com

www.szabo-scandic.com

[linkedin.com/company/szaboscandic](https://www.linkedin.com/company/szaboscandic)



Rabbit IgG Heavy and Light Chain Cross-Adsorbed Antibody

Goat Polyclonal Conjugate DyLight® 488

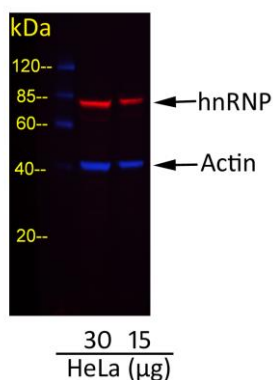
Antigen Affinity Purified

Catalog No. A120-201D2

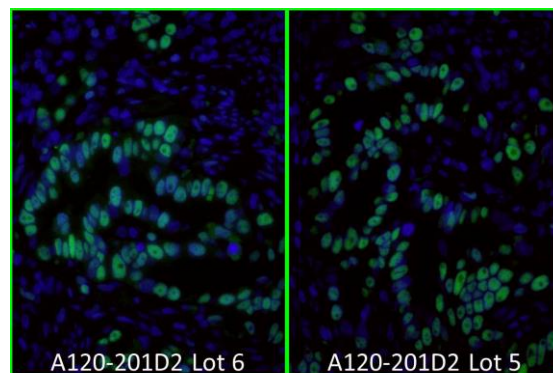
Lot No. 16

APPLICATIONS	WB, IHC, ICC, Flow Cyt, IF										
SPECIES REACTIVITY	Rabbit. Minimum reactivity to bovine, chicken, horse, human, mouse, pig and rat										
AMOUNT	1 ml										
CONCENTRATION	0.5 mg/ml										
STORAGE/SHELF LIFE	2 – 8°C / 1 year from date of receipt										
PHYSICAL STATE	Liquid										
BUFFER	Phosphate Buffered Saline (PBS) containing 0.2% BSA and 0.09% Sodium Azide										
FLUOROPHORE/PROTEIN	6.4										
ISOTYPE	IgG										
ORIGIN	USA										
PRODUCTION PROCEDURES	<p>Antiserum was cross adsorbed using bovine, chicken, horse, human, mouse, pig and rat immunosorbents to remove cross reactive antibodies. The antibody to rabbit IgG was isolated by affinity chromatography using antigen coupled to agarose beads and conjugated to DyLight® 488.</p> <p>Immunoglobulin concentration was determined using Beer's Law where 1 mg/mL IgG has an A280 of 1.4.</p> <p>By immunoelectrophoresis and ELISA this antibody reacts specifically with rabbit IgG and with light chains common to other rabbit immunoglobulins. No antibody was detected against non-immunoglobulin serum proteins. Less than 1% cross reactivity to bovine, chicken, horse, human, mouse, pig and rat IgG was detected. This antibody may cross react with IgG from other species.</p>										
APPLICATIONS	<p>Centrifuge tube to remove product from lid. Optimal working dilutions should be determined experimentally by the investigator. Prepare working dilution immediately before use.</p> <table><tr><td>Western Blot</td><td>1:1000 – 1:20,000. 5% non-fat dry milk in PBST or TBST is recommended for blocking and incubation of antibodies. BSA is not recommended.</td></tr><tr><td>Immunohistochemistry</td><td>1:50 – 1:500</td></tr><tr><td>Immunocytochemistry</td><td>1:50 – 1:500</td></tr><tr><td>Flow Cytometry</td><td>1:50 – 1:200</td></tr><tr><td>Immunofluorescence</td><td>1:50 – 1:500</td></tr></table>	Western Blot	1:1000 – 1:20,000. 5% non-fat dry milk in PBST or TBST is recommended for blocking and incubation of antibodies. BSA is not recommended.	Immunohistochemistry	1:50 – 1:500	Immunocytochemistry	1:50 – 1:500	Flow Cytometry	1:50 – 1:200	Immunofluorescence	1:50 – 1:500
Western Blot	1:1000 – 1:20,000. 5% non-fat dry milk in PBST or TBST is recommended for blocking and incubation of antibodies. BSA is not recommended.										
Immunohistochemistry	1:50 – 1:500										
Immunocytochemistry	1:50 – 1:500										
Flow Cytometry	1:50 – 1:200										
Immunofluorescence	1:50 – 1:500										
APPLICATION NOTES	<p>Not all listed applications have been specifically tested by our laboratory.</p> <p>DyLight® 488 is excited at 493 (in PBS) and emits at 518 (in PBS).</p> <p>DyLight® is a trademark of Thermo Fisher Scientific Inc. and its subsidiaries.</p>										
ADDITIONAL INFO	<p>https://www.fortislifesciences.com/p/A120-201D2</p> <p>Use the link above to view SDS, a current list of citations, and other product specific information.</p>										

This document certifies that this product has met all of the quality control standards defined by Bethyl Laboratories, Inc.
Michael Spencer, PhD Date: March 27, 2025

**Detection of Actin and hnRNP in HeLa Whole Cell Lysate.**

Primary Antibodies: cocktail of rabbit anti-Actin A300-491A (A300-491A-5) and mouse anti-hnRNP A500-011A (A500-011A-1) at 1 µg/ml each. *Secondary Antibodies:* cocktail of Dylight® 488-conjugated goat anti-rabbit A120-201D2 (A120-201D2-5) (blue) and Dylight® 680-conjugated goat anti-mouse A90-516D6 (A90-516D6-1) (red) at 0.5 µg/ml each. Acquisition: Syngene G:Box, 6 seconds (blue) and 42 seconds (red).

**Detection of human PCNA by immunofluorescence.**

Sample: FFPE section of human stomach carcinoma. *Primary Antibody:* Affinity purified rabbit anti-PCNA (Cat. No. IHC-00012 Lot1) used at a dilution of 1:100. *Secondary Antibody:* Green-fluorescent goat anti-rabbit IgG-heavy and light chain, cross-adsorbed Antibody DyLight® 488 Conjugated (A120-201D2 Lot 6) used at a dilution of 1:100 (5µg/ml). *Counterstain:* DAPI (blue)