



SZABO SCANDIC

Part of Europa Biosite

Produktinformation



Forschungsprodukte & Biochemikalien



Zellkultur & Verbrauchsmaterial



Diagnostik & molekulare Diagnostik



Laborgeräte & Service

Weitere Information auf den folgenden Seiten!
See the following pages for more information!



Lieferung & Zahlungsart

siehe unsere [Liefer- und Versandbedingungen](#)

Zuschläge

- Mindermengenzuschlag
- Trockeneiszuschlag
- Gefahrgutzuschlag
- Expressversand

SZABO-SCANDIC HandelsgmbH

Quellenstraße 110, A-1100 Wien

T. +43(0)1 489 3961-0

F. +43(0)1 489 3961-7

mail@szabo-scandic.com

www.szabo-scandic.com

[linkedin.com/company/szaboscandic](https://www.linkedin.com/company/szaboscandic) 

Rabbit IgG Heavy and Light Chain Cross-Adsorbed Antibody

Donkey Polyclonal Conjugate DyLight® 550

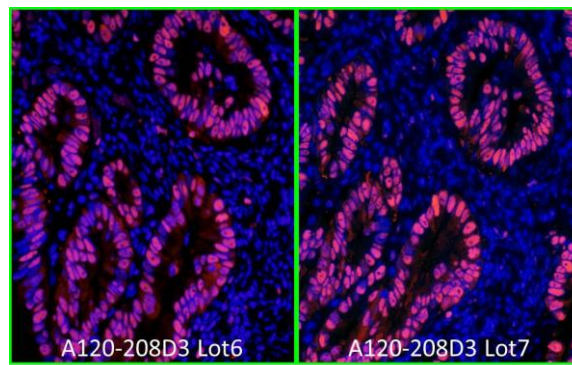
Antigen Affinity Purified

Catalog No. A120-208D3

Lot No. 15

APPLICATIONS	IHC, ICC, Flow Cyt, IF
SPECIES REACTIVITY	Rabbit. Minimum reactivity to bovine, chicken, goat, human, mouse, pig and rat
AMOUNT	1 ml
CONCENTRATION	0.5 mg/ml
STORAGE/SHELF LIFE	2 – 8°C / 1 year from date of receipt
PHYSICAL STATE	Liquid
BUFFER	Phosphate Buffered Saline (PBS) containing 0.2% BSA and 0.09% Sodium Azide
FLUOROPHORE/PROTEIN	4.8
ISOTYPE	IgG
ORIGIN	USA
PRODUCTION PROCEDURES	<p>Antiserum was cross adsorbed using bovine, chicken, goat, human, mouse, pig and rat immunosorbents to remove cross reactive antibodies. The antibody to rabbit IgG was isolated by affinity chromatography using antigen coupled to agarose beads and conjugated to DyLight® 550.</p> <p>Antibody concentration was determined by extinction coefficient: absorbance at 280 nm of 1.4 equals 1.0 mg of IgG.</p> <p>By immunoelectrophoresis and ELISA this antibody reacts specifically with rabbit IgG and with light chains common to other rabbit immunoglobulins. No antibody was detected against non-immunoglobulin serum proteins. Less than 1% cross reactivity to bovine, chicken, goat, human, mouse, pig and rat IgG was detected. This antibody may cross react with IgG from other species.</p>
APPLICATIONS	<p>Centrifuge tube to remove product from lid. Optimal working dilutions should be determined experimentally by the investigator. Prepare working dilution immediately before use.</p> <p>Immunohistochemistry 1:50 – 1:500 Immunocytochemistry 1:50 – 1:500 Flow Cytometry 1:50 – 1:200 Immunofluorescence 1:50 – 1:500</p>
APPLICATION NOTES	<p>Not all listed applications have been specifically tested by our laboratory.</p> <p>DyLight® 550 is excited at 562 (in PBS) and emits at 576 (in PBS). DyLight® 550 replaces DyLight® 549.</p>
ADDITIONAL INFO	<p>DyLight® is a trademark of Thermo Fisher Scientific Inc. and its subsidiaries. https://www.fortislife.com/p/A120-208D3 Use the link above to view SDS, a current list of citations, and other product specific information.</p>

This document certifies that this product has met all of the quality control standards defined by Bethyl Laboratories, Inc.
Michael Spencer, PhD Date: April 25, 2023

**Detection of human PCNA by immunofluorescence.**

Samples: FFPE sections of human stomach carcinoma.

Primary Antibody: Affinity purified rabbit anti-PCNA (Cat. No. IHC-00012 Lot1) used at a dilution of 1:100.

Secondary Antibody: Red-fluorescent donkey anti-rabbit IgG-heavy and light chain cross-adsorbed Antibody DyLight® 550 Conjugated. A120-208D3 Lot 6 (left) and A120-208D3 Lot 7 (right) used at a dilution of 1:100 (5 µg/ml). *Counterstain:* DAPI (blue)