



# SZABO SCANDIC

Part of Europa Biosite

## Produktinformation



Forschungsprodukte & Biochemikalien



Zellkultur & Verbrauchsmaterial



Diagnostik & molekulare Diagnostik



Laborgeräte & Service

Weitere Information auf den folgenden Seiten!  
See the following pages for more information!



### Lieferung & Zahlungsart

siehe unsere [Liefer- und Versandbedingungen](#)

### Zuschläge

- Mindermengenzuschlag
- Trockeneiszuschlag
- Gefahrgutzuschlag
- Expressversand

### SZABO-SCANDIC HandelsgmbH

Quellenstraße 110, A-1100 Wien

T. +43(0)1 489 3961-0

F. +43(0)1 489 3961-7

[mail@szabo-scandic.com](mailto:mail@szabo-scandic.com)

[www.szabo-scandic.com](http://www.szabo-scandic.com)

[linkedin.com/company/szaboscandic](https://www.linkedin.com/company/szaboscandic)



# Rabbit IgG Heavy and Light Chain Cross-Adsorbed Antibody

Donkey Polyclonal Conjugate DyLight® 594

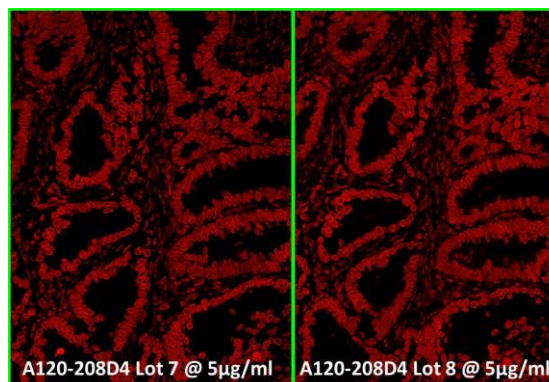
Antigen Affinity Purified

Catalog No. A120-208D4

Lot No. 18

<b>APPLICATIONS</b>	IHC, ICC, Flow Cyt, IF
<b>SPECIES REACTIVITY</b>	Rabbit. Minimum reactivity to bovine, chicken, goat, human, mouse, pig and rat
<b>AMOUNT</b>	1 ml
<b>CONCENTRATION</b>	0.5 mg/ml
<b>STORAGE/SHELF LIFE</b>	2 – 8°C / 1 year from date of receipt
<b>PHYSICAL STATE</b>	Liquid
<b>BUFFER</b>	Phosphate Buffered Saline (PBS) containing 0.2% BSA and 0.09% Sodium Azide
<b>FLUOROPHORE/PROTEIN</b>	6.0
<b>ISOTYPE</b>	IgG
<b>ORIGIN</b>	USA
<b>PRODUCTION PROCEDURES</b>	<p>Antiserum was cross adsorbed using bovine, chicken, goat, human, mouse, pig and rat immunosorbents to remove cross reactive antibodies. The antibody to rabbit IgG was isolated by affinity chromatography using antigen coupled to agarose beads and conjugated to DyLight® 594.</p> <p>Antibody concentration was determined by extinction coefficient: absorbance at 280 nm of 1.4 equals 1.0 mg of IgG.</p> <p>By immunoelectrophoresis and ELISA this antibody reacts specifically with rabbit IgG and with light chains common to other rabbit immunoglobulins. No antibody was detected against non-immunoglobulin serum proteins. Less than 1% cross reactivity to bovine, chicken, horse, human, mouse, pig and rat IgG was detected. This antibody may cross react with IgG from other species.</p>
<b>APPLICATIONS</b>	<p>Centrifuge tube to remove product from lid. Optimal working dilutions should be determined experimentally by the investigator. Prepare working dilution immediately before use.</p> <p>Immunohistochemistry 1:40 – 1:400 Immunocytochemistry 1:50 – 1:500 Flow Cytometry 1:50 – 1:200 Immunofluorescence 1:40 – 1:400</p>
<b>APPLICATION NOTES</b>	<p>Not all listed applications have been specifically tested by our laboratory.</p> <p>DyLight® 594 is excited at 593 (in PBS) and emits at 618 (in PBS).</p>
<b>ADDITIONAL INFO</b>	<p>DyLight® is a trademark of Thermo Fisher Scientific Inc. and its subsidiaries.</p> <p><a href="https://www.fortislifesciences.com/p/A120-208D4">https://www.fortislifesciences.com/p/A120-208D4</a></p> <p>Use the link above to view SDS, a current list of citations, and other product specific information.</p>

This document certifies that this product has met all of the quality control standards defined by Bethyl Laboratories, Inc.  
Michael Spencer, PhD Date: June 2, 2023

**Detection of human Lamin A/C by immunofluorescence.**

*Samples:* FFPE sections of human stomach carcinoma.

*Primary Antibody:* Affinity purified rabbit anti-Lamin A/C (Cat. No. A303-430A-1) used at a dilution of 1:1,000.

*Secondary Antibody:* Red-fluorescent donkey anti-rabbit IgG-heavy and light chain, cross-adsorbed Antibody DyLight® 594 Conjugated A120-208D4 Lot 7 (left) and A120-208D4 Lot 8 (right) used at a dilution of 1:100 (5 µg/ml).