



SZABO SCANDIC

Part of Europa Biosite

Produktinformation



Forschungsprodukte & Biochemikalien



Zellkultur & Verbrauchsmaterial



Diagnostik & molekulare Diagnostik



Laborgeräte & Service

Weitere Information auf den folgenden Seiten!
See the following pages for more information!



Lieferung & Zahlungsart

siehe unsere [Liefer- und Versandbedingungen](#)

Zuschläge

- Mindermengenzuschlag
- Trockeneiszuschlag
- Gefahrgutzuschlag
- Expressversand

SZABO-SCANDIC HandelsgmbH

Quellenstraße 110, A-1100 Wien

T. +43(0)1 489 3961-0

F. +43(0)1 489 3961-7

mail@szabo-scandic.com

www.szabo-scandic.com

[linkedin.com/company/szaboscandic](https://www.linkedin.com/company/szaboscandic) 

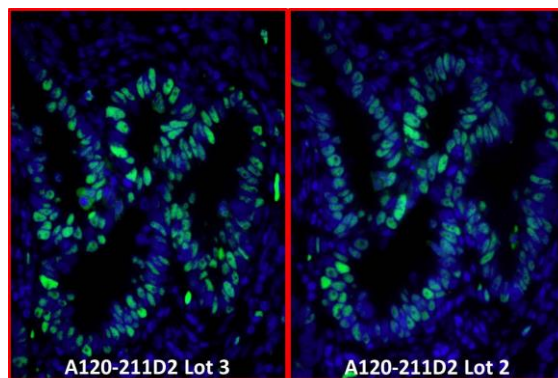
Rabbit IgG–Fc Fragment Cross–Adsorbed Antibody

Goat Polyclonal
Antigen Affinity Purified
Catalog No. A120–211D2
Lot No. 5

Conjugate DyLight® 488

APPLICATIONS	IHC, ICC, Flow Cyt, IF								
SPECIES REACTIVITY	Rabbit. Minimum reactivity to human, mouse and rat								
AMOUNT	1 ml								
CONCENTRATION	0.5 mg/ml								
STORAGE/SHELF LIFE	2 – 8°C / 1 year from date of receipt								
PHYSICAL STATE	Liquid								
BUFFER	Phosphate Buffered Saline (PBS) containing 0.2% BSA and 0.09% Sodium Azide								
FLUOROPHORE/PROTEIN	5.7								
ISOTYPE	IgG								
ORIGIN	USA								
PRODUCTION PROCEDURES	<p>Antiserum was solid phase adsorbed to ensure class specificity. Antiserum was cross adsorbed using human, mouse and rat immunosorbents to remove cross reactive antibodies. The antibody to rabbit IgG was isolated by affinity chromatography using antigen coupled to agarose beads and conjugated to DyLight® 488.</p> <p>Immunoglobulin concentration was determined using Beer's Law where 1 mg/mL IgG has an A280 of 1.4.</p> <p>By ELISA, this antibody reacts specifically with rabbit IgG. No antibody was detected against non-immunoglobulin serum proteins. Less than 1% cross reactivity to human, mouse and rat IgG was detected. This antibody may cross react with IgG from other species.</p>								
APPLICATIONS	<p>Centrifuge tube to remove product from lid. Optimal working dilutions should be determined experimentally by the investigator. Prepare working dilution immediately before use.</p> <table><tr><td>Immunohistochemistry</td><td>1:40 – 1:400</td></tr><tr><td>Immunocytochemistry</td><td>1:40 – 1:400</td></tr><tr><td>Flow Cytometry</td><td>1:50 – 1:200</td></tr><tr><td>Immunofluorescence</td><td>1:40 – 1:400</td></tr></table>	Immunohistochemistry	1:40 – 1:400	Immunocytochemistry	1:40 – 1:400	Flow Cytometry	1:50 – 1:200	Immunofluorescence	1:40 – 1:400
Immunohistochemistry	1:40 – 1:400								
Immunocytochemistry	1:40 – 1:400								
Flow Cytometry	1:50 – 1:200								
Immunofluorescence	1:40 – 1:400								
APPLICATION NOTES	<p>Not all listed applications have been specifically tested by our laboratory.</p> <p>DyLight® 488 is excited at 493 (in PBS) and emits at 518 (in PBS).</p> <p>DyLight® is a trademark of Thermo Fisher Scientific Inc. and its subsidiaries.</p>								
ADDITIONAL INFO	<p>https://www.fortislife.com/p/A120-211D2</p> <p>Use the link above to view SDS, a current list of citations, and other product specific information.</p>								

This document certifies that this product has met all of the quality control standards defined by Bethyl Laboratories, Inc.
Michael Spencer, PhD Date: February 21, 2024

**Detection of human PCNA by immunofluorescence.**

Samples: FFPE serial sections of human breast carcinoma.

Primary Antibody: Affinity purified rabbit anti-PCNA (Cat. No. IHC-00012 Lot1) used at a dilution of 1:100.

Secondary Antibody: Green-fluorescent goat anti-rabbit IgG-Fc Fragment cross-adsorbed Antibody DyLight® 488 Conjugated (A120-211D2 Lot 3) used at a dilution of 1:50 (10µg/ml). *Counterstain:* DAPI (blue)