



SZABO SCANDIC

Part of Europa Biosite

Produktinformation



Forschungsprodukte & Biochemikalien



Zellkultur & Verbrauchsmaterial



Diagnostik & molekulare Diagnostik



Laborgeräte & Service

Weitere Information auf den folgenden Seiten!
See the following pages for more information!



Lieferung & Zahlungsart

siehe unsere [Liefer- und Versandbedingungen](#)

Zuschläge

- Mindermengenzuschlag
- Trockeneiszuschlag
- Gefahrgutzuschlag
- Expressversand

SZABO-SCANDIC Handels GmbH

Quellenstraße 110, A-1100 Wien

T. +43(0)1 489 3961-0

F. +43(0)1 489 3961-7

mail@szabo-scandic.com

www.szabo-scandic.com

[linkedin.com/company/szaboscandic](https://www.linkedin.com/company/szaboscandic) 

4-HNE Antibody

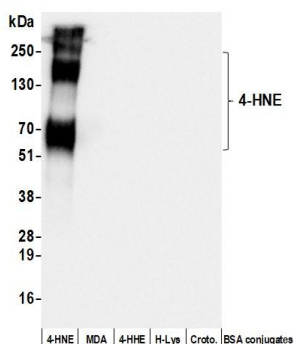
Goat Polyclonal
Antigen Affinity Purified
Catalog No. A150-120A-0.1MG
Lot No. 230427

APPLICATIONS	WB, ELISA				
AMOUNT	0.1 mg				
CONCENTRATION	1 mg/ml				
STORAGE/SHELF LIFE	2 – 8°C / 1 year from date of receipt				
PHYSICAL STATE	Liquid				
BUFFER	Phosphate Buffered Saline (PBS) with 0.09% Sodium Azide, BSA-Free				
ISOTYPE	IgG				
ORIGIN	USA				
PRODUCTION PROCEDURES	<p>The antibody was isolated by affinity chromatography using antigen coupled to agarose beads. Immunoglobulin concentration was determined using Beer’s Law where 1mg/mL IgG has an A280 of 1.4.</p> <p>By ELISA this antibody reacts specifically with 4-HNE modified proteins. There is no reaction with free BSA.</p>				
APPLICATIONS	<p>Centrifuge tube to remove product from lid. Optimal working dilutions should be determined experimentally by the investigator. Prepare working dilution immediately before use.</p> <table><tr><td>Western Blot</td><td>1:1000 – 1:30,000</td></tr><tr><td>ELISA</td><td>1:1000 – 1:30,000</td></tr></table>	Western Blot	1:1000 – 1:30,000	ELISA	1:1000 – 1:30,000
Western Blot	1:1000 – 1:30,000				
ELISA	1:1000 – 1:30,000				
APPLICATION NOTES	Not all listed applications have been specifically tested by our laboratory.				
ADDITIONAL INFO	<p>https://www.fortislifesciences.com/p/A150-120A-0.1MG</p> <p>Use the link above to view SDS, a current list of citations, and other product specific information.</p>				

This document certifies that this product has met all of the quality control standards defined by Bethyl Laboratories, Inc.

Michael Spencer, PhD

Date: April 5, 2024



Detection of 4-HNE by western blot. *Samples:* 1 µg BSA conjugated to 4-HNE, Malondialdehyde (MDA), 4-Hydroxy-2-hexenal (4-HHE), Hexanoyl Lysine (H-Lys), and Crotonaldehyde (Croto). *Antibody:* Rabbit anti-4-HNE antibody (A150-120A-0.1MG) used at 1:1000. *Secondary:* HRP-conjugated goat anti-rabbit IgG (A120-101P). *Detection:* Chemiluminescence with an exposure time of 1 second.