



SZABO SCANDIC

Part of Europa Biosite

Produktinformation



Forschungsprodukte & Biochemikalien



Zellkultur & Verbrauchsmaterial



Diagnostik & molekulare Diagnostik



Laborgeräte & Service

Weitere Information auf den folgenden Seiten!
See the following pages for more information!



Lieferung & Zahlungsart

siehe unsere [Liefer- und Versandbedingungen](#)

Zuschläge

- Mindermengenzuschlag
- Trockeneiszuschlag
- Gefahrgutzuschlag
- Expressversand

SZABO-SCANDIC Handels GmbH

Quellenstraße 110, A-1100 Wien

T. +43(0)1 489 3961-0

F. +43(0)1 489 3961-7

mail@szabo-scandic.com

www.szabo-scandic.com

[linkedin.com/company/szaboscandic](https://www.linkedin.com/company/szaboscandic) 

ECS (DYKDDDDK) Tag Antibody

Rabbit Polyclonal

Antigen Affinity Purified

Catalog No. A190-102A

Lot No. 230627

APPLICATIONS	WB, IP, ICC, ELISA
AMOUNT	0.1 ml
CONCENTRATION	1 mg/ml
STORAGE/SHELF LIFE	2 – 8°C / 1 year from date of receipt
PHYSICAL STATE	Liquid
BUFFER	Phosphate Buffered Saline (PBS) containing 0.09% Sodium Azide
ISOTYPE	IgG
ORIGIN	USA
PRODUCTION PROCEDURES	Rabbits were immunized with ECS, Enterokinase Cleavage Site (DYKDDDDK) conjugated to KLH. Antibody was isolated by affinity chromatography using the peptide immobilized on solid support.

Antibody concentration was determined by extinction coefficient: absorbance at 280 nm of 1.4 equals 1.0 mg of IgG.

By ELISA, Western blot and Immunofluorescence, this antibody reacts with FLAG™.

APPLICATIONS Centrifuge tube to remove product from lid. Optimal working dilutions should be determined experimentally by the investigator. Prepare working dilution immediately before use.

Western Blot	1:1,000 – 1:30,000
Immunoprecipitation	1 – 4 µg/mg lysate
Immunocytochemistry	1:100 – 1:400
ELISA	1:1,000 – 1:30,000; for coating plates 1:100 – 1:500

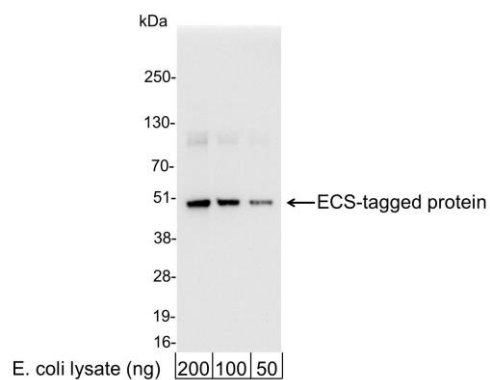
APPLICATION NOTES Not all listed applications have been specifically tested by our laboratory.

Validation by Western Blot was performed using a Western Blot Gel 4–20%.

ADDITIONAL INFO <https://www.fortislifesciences.com/p/A190-102A>

Use the link above to view SDS, a current list of citations, and other product specific information.

This document certifies that this product has met all of the quality control standards defined by Bethyl Laboratories, Inc.
Michael Spencer, PhD Date: June 27, 2023



Detection of ECS (DYKDDDDK)-tagged protein by western blot. *Samples:* 200, 100, or 50 ng of E. coli whole cell lysate expressing a multi-tag fusion protein. *Antibodies:* Affinity purified, rabbit anti-ECS antibody A190-102A used for WB at 0.04 $\mu\text{g/ml}$ (1:25,000). *Detection:* Chemiluminescence with an exposure time of 3 seconds.