



SZABO SCANDIC

Part of Europa Biosite

Produktinformation



Forschungsprodukte & Biochemikalien



Zellkultur & Verbrauchsmaterial



Diagnostik & molekulare Diagnostik



Laborgeräte & Service

Weitere Information auf den folgenden Seiten!
See the following pages for more information!



Lieferung & Zahlungsart

siehe unsere [Liefer- und Versandbedingungen](#)

Zuschläge

- Mindermengenzuschlag
- Trockeneiszuschlag
- Gefahrgutzuschlag
- Expressversand

SZABO-SCANDIC Handels GmbH

Quellenstraße 110, A-1100 Wien

T. +43(0)1 489 3961-0

F. +43(0)1 489 3961-7

mail@szabo-scandic.com

www.szabo-scandic.com

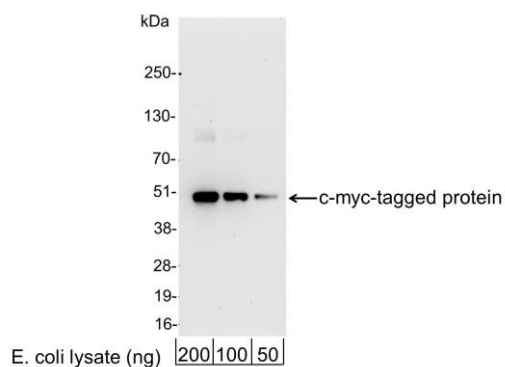
[linkedin.com/company/szaboscandic](https://www.linkedin.com/company/szaboscandic) 

Myc Tag Antibody

Goat Polyclonal	Conjugate	HRP
Antigen Affinity Purified		
Catalog No. A190-104P	Uniprot ID	P01106
Lot No. 28	GenelD	4609

APPLICATIONS	WB, ICC, ELISA						
AMOUNT	0.1 ml						
CONCENTRATION	1 mg/ml						
STORAGE/SHELF LIFE	2 – 8°C / 1 year from date of receipt						
PHYSICAL STATE	Liquid						
BUFFER	Phosphate Buffered Saline (PBS) containing 0.2% BSA and 0.05% Pro-Clean 400						
ISOTYPE	IgG						
ORIGIN	USA						
PRODUCTION PROCEDURES	<p>Goats were immunized with a synthetic peptide representing amino acid residues 410–419 (EQKLISEEDL) of human myc conjugated to KLH. Antibody was isolated by affinity chromatography using the peptide immobilized on solid support and conjugated to horseradish peroxidase (HRP).</p> <p>Prior to conjugation, immunoglobulin concentration was determined using Beer's Law where 1mg/mL IgG has an A280 of 1.4. Molar enzyme/antibody protein ratio is 4:1.</p>						
APPLICATIONS	<p>Centrifuge tube to remove product from lid. Optimal working dilutions should be determined experimentally by the investigator. Prepare working dilution immediately before use.</p> <table><tr><td>Western Blot</td><td>1:1000 – 1:30,000</td></tr><tr><td>Immunocytochemistry</td><td>1:200 – 1:500</td></tr><tr><td>ELISA</td><td>1:10,000 – 1:100,000</td></tr></table>	Western Blot	1:1000 – 1:30,000	Immunocytochemistry	1:200 – 1:500	ELISA	1:10,000 – 1:100,000
Western Blot	1:1000 – 1:30,000						
Immunocytochemistry	1:200 – 1:500						
ELISA	1:10,000 – 1:100,000						
APPLICATION NOTES	<p>All western blot analysis is performed using 5% Milk-TBST for blocking and as antibody diluent. Primary antibody is incubated overnight.</p> <p>Western blots are performed using Donkey anti-Goat IgG Heavy and Light Chain Antibody (Cat. No. A50-101P).</p>						
ADDITIONAL INFO	<p>https://www.fortislife.com/p/A190-104P</p> <p>Use the link above to view SDS, a current list of citations, and other product specific information.</p>						

This document certifies that this product has met all of the quality control standards defined by Bethyl Laboratories, Inc.
Michael Spencer, PhD Date: March 7, 2024

**Detection of c-myc-tagged protein by western blot.**

Samples: 200, 100, or 50 ng of E. coli whole cell lysate expressing a multi-tag fusion protein. *Antibodies:* Affinity-purified, HRP-conjugated, goat anti-Myc Tag antibody A190-104P used for WB at 0.04 µg/ml (1:25,000). *Detection:* Chemiluminescence with an exposure time of 10 seconds.