



# SZABO SCANDIC

Part of Europa Biosite

## Produktinformation



Forschungsprodukte & Biochemikalien



Zellkultur & Verbrauchsmaterial



Diagnostik & molekulare Diagnostik



Laborgeräte & Service

Weitere Information auf den folgenden Seiten!  
See the following pages for more information!



### Lieferung & Zahlungsart

siehe unsere [Liefer- und Versandbedingungen](#)

### Zuschläge

- Mindermengenzuschlag
- Trockeneiszuschlag
- Gefahrgutzuschlag
- Expressversand

### SZABO-SCANDIC HandelsgmbH

Quellenstraße 110, A-1100 Wien

T. +43(0)1 489 3961-0

F. +43(0)1 489 3961-7

[mail@szabo-scandic.com](mailto:mail@szabo-scandic.com)

[www.szabo-scandic.com](http://www.szabo-scandic.com)

[linkedin.com/company/szaboscandic](https://www.linkedin.com/company/szaboscandic) 

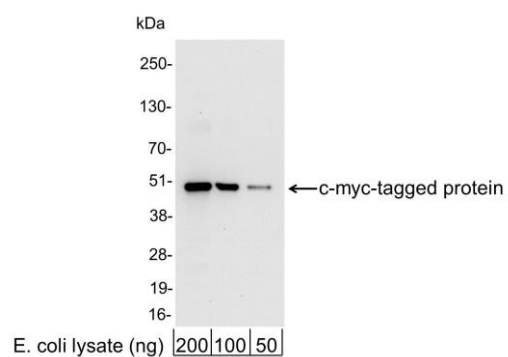
# Myc Tag Antibody

Rabbit Polyclonal		Conjugate	HRP
Antigen Affinity Purified			
Catalog No.	A190-105P	Uniprot ID	P01106
Lot No.	A190-105P-21	GeneID	4609

<b>APPLICATIONS</b>	WB, IHC, ICC, ELISA								
<b>AMOUNT</b>	0.1 ml								
<b>CONCENTRATION</b>	1 mg/ml								
<b>STORAGE/SHELF LIFE</b>	2 – 8°C / 1 year from date of receipt								
<b>PHYSICAL STATE</b>	Liquid								
<b>BUFFER</b>	Phosphate Buffered Saline (PBS) containing 0.2% BSA and 0.05% Pro-Clean 400								
<b>ISOTYPE</b>	IgG								
<b>ORIGIN</b>	USA								
<b>PRODUCTION PROCEDURES</b>	<p>Rabbits were immunized with a synthetic peptide representing amino acid residues 410–419 (EQKLISEEDL) of human myc conjugated to KLH. Antibody was isolated by affinity chromatography using the peptide immobilized on solid support and conjugated to horseradish peroxidase (HRP).</p> <p>Antibody concentration was determined by extinction coefficient prior to conjugation: absorbance at 280 nm of 1.4 equals 1.0 mg of IgG. Molar enzyme/antibody protein ratio is 4:1.</p>								
<b>APPLICATIONS</b>	<p>Centrifuge tube to remove product from lid. Optimal working dilutions should be determined experimentally by the investigator. Prepare working dilution immediately before use.</p> <table><tr><td>Western Blot</td><td>1:1,000 – 1:30,000</td></tr><tr><td>Immunohistochemistry</td><td>Not applicable</td></tr><tr><td>Immunocytochemistry</td><td>1:200 – 1:500</td></tr><tr><td>ELISA</td><td>1:10,000 – 1:100,000</td></tr></table>	Western Blot	1:1,000 – 1:30,000	Immunohistochemistry	Not applicable	Immunocytochemistry	1:200 – 1:500	ELISA	1:10,000 – 1:100,000
Western Blot	1:1,000 – 1:30,000								
Immunohistochemistry	Not applicable								
Immunocytochemistry	1:200 – 1:500								
ELISA	1:10,000 – 1:100,000								
<b>APPLICATION NOTES</b>	Not all listed applications have been specifically tested by our laboratory.								
<b>ADDITIONAL INFO</b>	<p>Validation by Western Blot was performed using a Western Blot Gel 4–20%.</p> <p><a href="https://www.fortislifesciences.com/p/A190-105P">https://www.fortislifesciences.com/p/A190-105P</a></p> <p>Use the link above to view SDS, a current list of citations, and other product specific information.</p>								

This document certifies that this product has met all of the quality control standards defined by Bethyl Laboratories, Inc.  
Michael Spencer, PhD

Date: March 3, 2023

**Detection of c-myc-tagged Protein by western blot.**

*Samples:* 200, 100, or 50 ng of E. coli whole cell lysate expressing a multi-tag fusion protein. *Antibodies:* Affinity-purified, HRP-conjugated, rabbit anti-Myc Tag antibody A190-105P used for WB at 0.04 µg/ml (1:25,000).

*Detection:* Chemiluminescence with an exposure time of 10 seconds.